

Wellington's Victory or the Battle of Vittoria  
Op. 91

Violoncello e Basso.

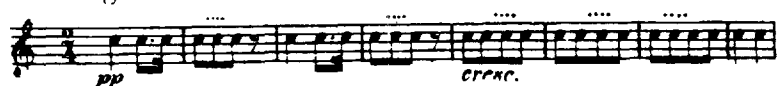
Ludwig van Beethoven

**ERSTE ABTHEILUNG.**

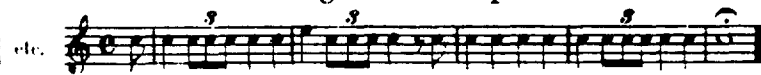
Schlacht.

Trommeln und Trompeten an der englischen Seite.

Englische Trommeln zuerst allein.



Dann treten dazu englische Trompeten in Es.



Marcia: Rule Britania.

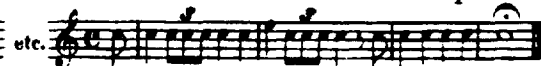


Trommeln und Trompeten an der französischen Seite.

Französische Trommeln zuerst allein.



Dann treten dazu französische Trompeten in C



Marcia: Marlborough.



Tromba in C an der französischen Seite.



Tromba in Es an der englischen Seite.



# Beethoven — Wellington's Victory

Violoncello e Basso.

Schlacht.

Allegro.

Meno Allegro.

Vol.

D

# Beethoven — Wellington's Victory

## Violoncello e Basso.

unis.

V

This section consists of three systems of music. The first system has two staves. The second system has one staff with a 'unis.' marking. The third system has one staff with a 'V' marking. The music is in a key with two flats and a 3/4 time signature.

## Sturm-Marsch.

Allegro assai.

ff sf sf

1 2 3 4 5 6 7 8 9 10 11

12 1 2 3 4 5 6 7 8 9 10 11

2 3 4 5 6 7 8

This section consists of three systems of music. The first system has one staff with measures 1-11 and dynamics ff, sf, sf. The second system has one staff with measures 12-11 and dynamics ff, sf, sf, sf, sf. The third system has one staff with measures 2-8 and dynamics sf, sf, sf, sf. There is an 'E' marking above measure 8 of the second system.

Sempre più Allegro.

1 2 3 4 5 6 7 8 9 10

This system has one staff with measures 1-10 and dynamics sf, sf, sf, sf.

Presto.

ff

F.

This section consists of four systems of music. The first system has one staff with dynamics ff. The second system has one staff with dynamics fff and an 'F.' marking. The third system has one staff with dynamics sf, sf, sf, sf. The fourth system has one staff with dynamics sf, sf, sf, sf.

# Beethoven — Wellington's Victory

4

## Violoncello e Basso.

Violoncello and Bass staves for measures 1 through 16. The music is in G major and 2/4 time. The first staff begins with a dynamic of *più f*. The second staff has a *G* marking above it. The third staff has a *fff* dynamic. The fourth staff is numbered 1 through 10. The fifth staff is numbered 11 through 16 and includes a *dim.* marking. The sixth staff begins with a *p* dynamic and the instruction *sempre più p*.

### Andante.

Violoncello and Bass staves for measures 17 through 24. The tempo is marked *Andante*. The first staff begins with a *pp* dynamic. The second staff is marked *Vel.* and includes a *pp* dynamic with a *6* fingering. The third staff is marked *C.B.* and includes a *pp* dynamic with a *6* fingering. The fourth staff includes dynamics of *f* and *p*. The fifth staff includes dynamics of *p*, *pp*, and *pizz.* (pizzicato).

Beethoven — Wellington's Victory

Violoncello e Basso.

ZWEITE ABTHEILUNG.

Sieges-Symphonie.

Intrada.

Allegro, ma non troppo.

Allegro con brio.

Andante grazioso.

*pizz.*

Tempo I.



# Beethoven — Wellington's Victory

## Violoncello e Basso.

*pizz.* **Tutti.** arco 1 2 3  
*pp* arco *cresc. poco a poco*  
*pp* *cresc. poco a poco*

4 5 6 7 8 9 10 11

unis. *f* *ff* *P*

*f* *f* *f* *f* *f* *f* *f* *f*

*ff* *ff* *ff* *ff* *ff* *ff* *ff* *ff*

Violonc. *p cresc.* Bassi. *p cresc.* *f*

**R** 1 5

Violonc. *pizz.* *p* Bassi *pizz. cresc. poco a poco* 1 2 3 4 5 6 7 8 9

10 11 **S** arco *ff* 1 1 1 1

1 1 1 1