

Ouvertüre

Zu Heinrich Joseph v. Collins Trauerspiel

Coriolan

LUDWIG VAN BEETHOVEN (1770-1827)

Op. 62

Bassoon

Allegro con brio

2

ff

3

3

12

5

5

f

p cresc. - -

27

I.

f

p

cresc. - - - -

34

ff

sf

41

sf

sf

sf

sf

sf

sf

sf

sf

sf

sf

50

9

a2

p cresc. - - - -

ff

p

65

cresc. - - - -

ff

p cresc. - - - -

74

sf

p

pp

80-85: Musical staff with bass clef, 6/8 time signature, and key signature of two flats. The staff contains a sequence of chords and eighth notes. A dashed line with "cresc." above it spans from measure 80 to 85. A dynamic marking of **ff** is placed at the end of the staff.

86-92: Musical staff with bass clef, 6/8 time signature, and key signature of two flats. The staff contains a sequence of chords and eighth notes. A dynamic marking of **sf** is placed at the end of the staff.

93-99: Musical staff with bass clef, 6/8 time signature, and key signature of two flats. The staff contains a sequence of chords and eighth notes. Three dynamic markings of **sf** are placed below the staff.

100-106: Musical staff with bass clef, 6/8 time signature, and key signature of two flats. The staff contains a sequence of chords and eighth notes. Dynamic markings include **p**, **p**, **II.**, **fp**, and **fp**.

107-112: Musical staff with bass clef, 6/8 time signature, and key signature of two flats. The staff contains a sequence of chords and eighth notes. A dynamic marking of **a2** is placed above the staff.

113-118: Musical staff with bass clef, 6/8 time signature, and key signature of two flats. The staff contains a sequence of chords and eighth notes. Dynamic markings include **p** and **p**.

119-124: Musical staff with bass clef, 6/8 time signature, and key signature of two flats. The staff contains a sequence of chords and eighth notes. Dynamic markings include **II.** and **II.**.

125-131: Musical staff with bass clef, 6/8 time signature, and key signature of two flats. The staff contains a sequence of chords and eighth notes. Dynamic markings include **II.**, **cresc.**, and **II.**.

132-139: Musical staff with bass clef, 6/8 time signature, and key signature of two flats. The staff contains a sequence of chords and eighth notes. Dynamic markings include **p** and **a2**.

140-145: Musical staff with bass clef, 6/8 time signature, and key signature of two flats. The staff contains a sequence of chords and eighth notes. A dynamic marking of **f** is placed at the beginning of the staff.

144 *p* *cresc.* *ff*

150 *ff*

158 *sf sf ff sf ff*

168 *sf sf sf sf sf sf sf sf*

176 *p* *cresc.* *a2*

185 *ff* *p*

193 *ff* *p*

202 *f* *p* *p*

cresc.-----*ff*

214

ff I. II. *sf*

221

I. II. *sf* II. *sf* II. *sf*

227

a2 *p* II.

234

fp *a2* *f*

240

7 *p* *cresc.*

253

f *p* *f* *p* *f* *p* *a2* *cresc.*

261

ff *sf* *sf* *sf*

267

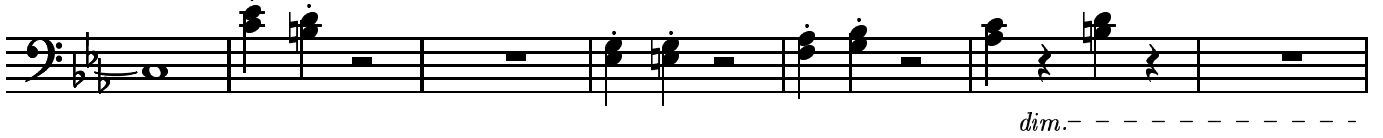
sf *sf* *sf* *ff* *a2* *sempre*



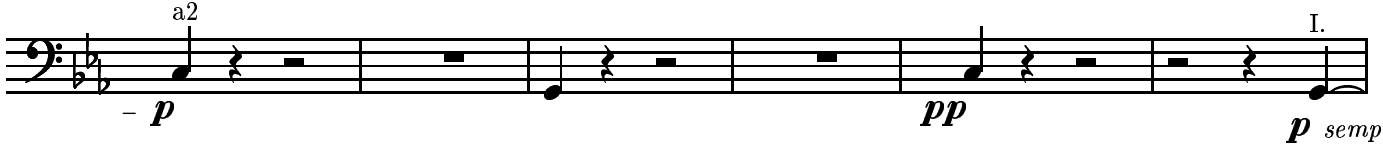
276



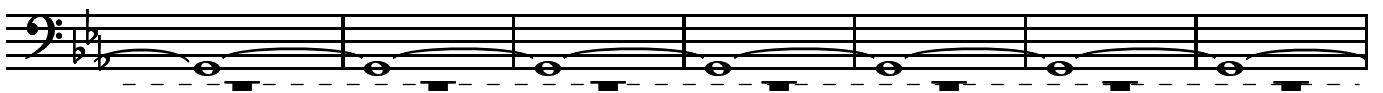
285



292



298



305

