

Sonata

*per il Cembalo
dedicata*

*al Signore Illustrissimo
il Signore George Ernesto
Stahl,*

Consigliere della corte

di Sua Maestà

il Re di Prussia Elettore di Brandeburgo

e composta

da

Guiglielmo Friedemann Bach.



ms. 8



Illustr^{mo} Signore, e Padrone
Colend^{mo}

Non havendo mai havuto l'occasione di far vedere pubblicamente la riconoscenza, allaquale l'honore della Sua amicizia, e Sua bontà molto particolare verso di me m'obligano: Oro di valermi della presente, dedicando a V. S. Illustr^{ma} qualche prove del mio studio in musica, e supplicandola di ricevere la buona volontà come un pegno della mia grandissima divozione.

Se il prezzo del mio lavoro non conviene al suo gran nome, io so almeno per certo, che mai una dedizione, sia fatta con una venerazione uguale à quella, che mi fa sottoscrivere

de V. S. Illustr^{ma}

Dreeda
il 16 Marzo
1745.

osservandissimo divotissimo Servo
Guiglielmo Friedemann Bach.

Un poco Allegro.

Sonata.

The image shows the beginning of a handwritten musical score for a Sonata. It consists of two staves. The top staff is in treble clef with a key signature of one sharp (F#) and a time signature of 2/4. The bottom staff is in bass clef with the same key signature and time signature. The music begins with a series of eighth and sixteenth notes, followed by rests and more rhythmic patterns. The notation is clear and legible, typical of 18th-century manuscript.



Handwritten musical notation on a grand staff, first system. The music is written in treble and bass clefs with a key signature of one sharp (F#). It features a complex melodic line in the upper voice and a more rhythmic accompaniment in the lower voice.

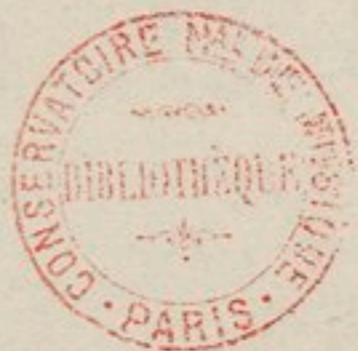
Handwritten musical notation on a grand staff, second system. The notation continues with similar melodic and rhythmic patterns, showing some dynamic markings and articulation.

Handwritten musical notation on a grand staff, third system. This system includes some complex rhythmic figures and a change in the lower voice part.

Handwritten musical notation on a grand staff, fourth system. This system is divided into two sections: the first is marked *Adagio* and the second is marked *Allegro*. The tempo change is clearly indicated by the change in note values and the density of the notation.

Handwritten musical notation on a grand staff, fifth system. The music continues with intricate melodic lines and a steady accompaniment.

volti



Handwritten musical notation, first system. It consists of two staves. The upper staff is in treble clef with a key signature of one sharp (F#) and a 7/8 time signature. The lower staff is in bass clef. The music features a complex rhythmic pattern with many beamed notes and rests.

Handwritten musical notation, second system. It consists of two staves. The upper staff is in treble clef with a key signature of one sharp (F#). The lower staff is in bass clef. The music continues with complex rhythmic patterns and beamed notes.

Handwritten musical notation, third system. It consists of two staves. The upper staff is in treble clef with a key signature of one sharp (F#). The lower staff is in bass clef. The music continues with complex rhythmic patterns and beamed notes.

Handwritten musical notation, fourth system. It consists of two staves. The upper staff is in treble clef with a key signature of one sharp (F#). The lower staff is in bass clef. The music continues with complex rhythmic patterns and beamed notes.

Handwritten musical notation, fifth system. It consists of two staves. The upper staff is in treble clef with a key signature of one sharp (F#). The lower staff is in bass clef. The music continues with complex rhythmic patterns and beamed notes.

volti subito.



Handwritten musical notation, first system. It consists of two staves. The upper staff is in treble clef with a key signature of one sharp (F#) and a 7/8 time signature. The lower staff is in bass clef with a key signature of one sharp (F#). The music features a variety of note values, including eighth and sixteenth notes, and rests.

Handwritten musical notation, second system. It consists of two staves. The upper staff is in treble clef with a key signature of one sharp (F#) and a 7/8 time signature. The lower staff is in bass clef with a key signature of one sharp (F#). The music continues with similar rhythmic patterns and note values.

Handwritten musical notation, third system. It consists of two staves. The upper staff is in treble clef with a key signature of one sharp (F#) and a 7/8 time signature. The lower staff is in bass clef with a key signature of one sharp (F#). The music continues with similar rhythmic patterns and note values.

Handwritten musical notation, fourth system. It consists of two staves. The upper staff is in treble clef with a key signature of one sharp (F#) and a 7/8 time signature. The lower staff is in bass clef with a key signature of one sharp (F#). The music continues with similar rhythmic patterns and note values.

Handwritten musical notation, fifth system. It consists of two staves. The upper staff is in treble clef with a key signature of one sharp (F#) and a 7/8 time signature. The lower staff is in bass clef with a key signature of one sharp (F#). The music continues with similar rhythmic patterns and note values.

Adagio.



Si volti.

Handwritten musical notation, first system. The system consists of two staves. The upper staff is in treble clef with a key signature of one sharp (F#) and a 4/4 time signature. It contains a melodic line with various note values, including eighth and sixteenth notes, and rests. The lower staff is in bass clef and contains a bass line with chords and single notes, including a dynamic marking 'f' (forte).

Handwritten musical notation, second system. The system consists of two staves. The upper staff continues the melodic line from the first system, featuring more complex rhythmic patterns and slurs. The lower staff continues the bass line, with dynamic markings 'f' and 'p' (piano) visible.

Handwritten musical notation, third system. The system consists of two staves. The upper staff continues the melodic line with slurs and ties. The lower staff continues the bass line with dynamic markings 'f' and 'p'.

Handwritten musical notation, fourth system. The system consists of two staves. The upper staff continues the melodic line with slurs and ties. The lower staff continues the bass line with dynamic markings 'f' and 'p'.

Handwritten musical notation, fifth system. The system consists of two staves. The upper staff continues the melodic line with slurs and ties. The lower staff continues the bass line with dynamic markings 'f' and 'p'.

Handwritten musical notation on a five-line staff, featuring a treble clef and a key signature of one sharp (F#). The notation includes various note values, rests, and bar lines.

Handwritten musical notation on a five-line staff, featuring a treble clef and a key signature of one sharp (F#). The notation includes various note values, rests, and bar lines.

Handwritten musical notation on a five-line staff, featuring a treble clef and a key signature of one sharp (F#). The notation includes various note values, rests, and bar lines.

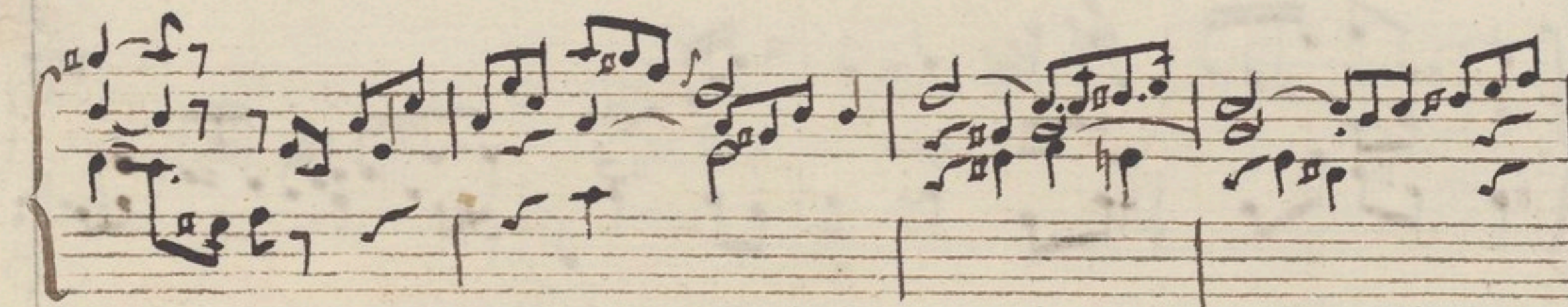
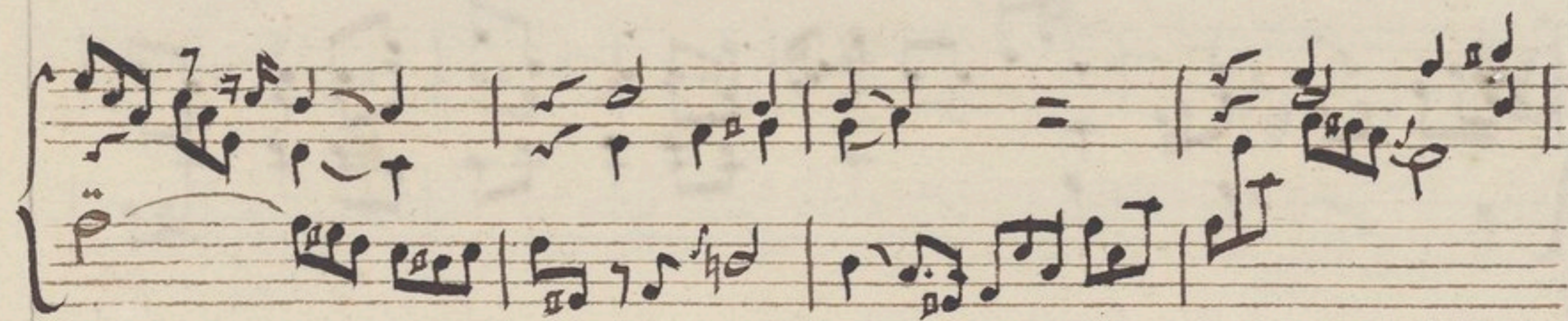
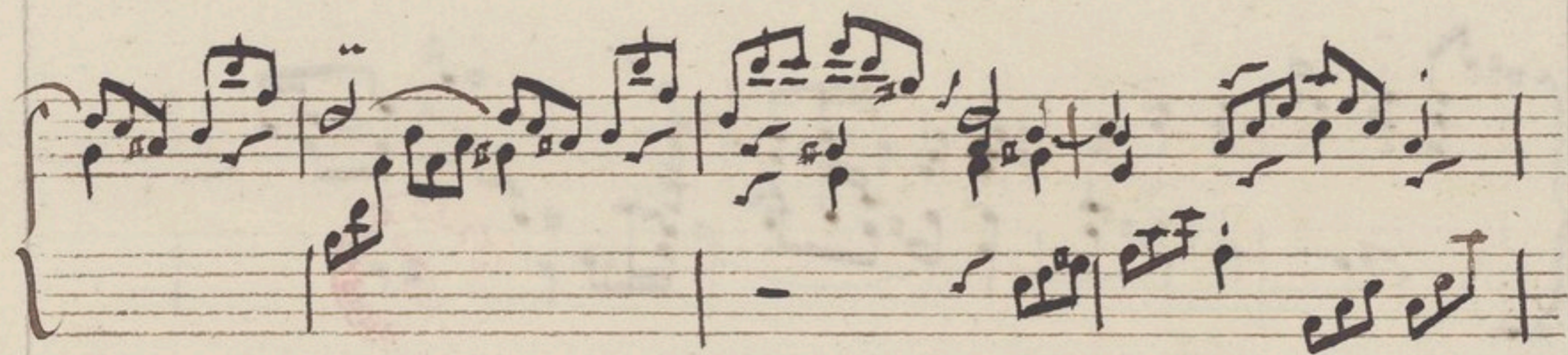
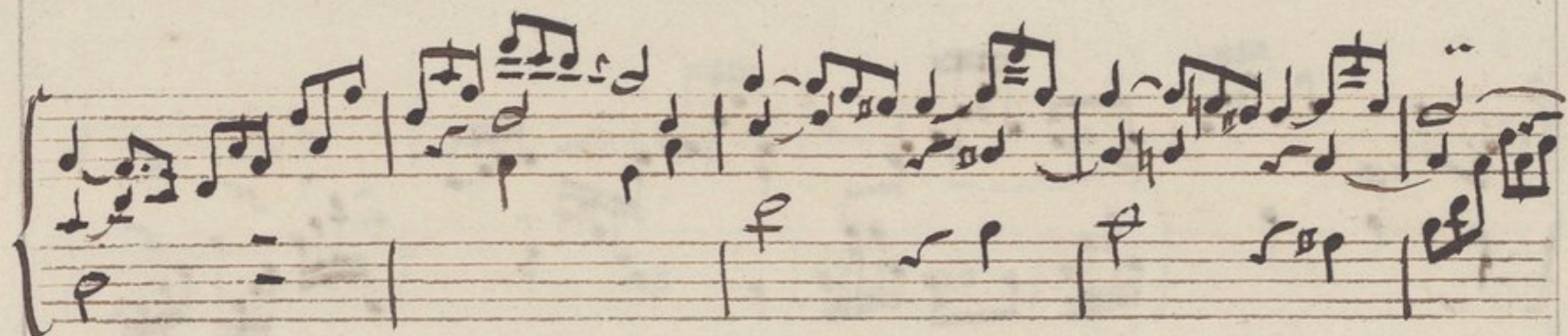
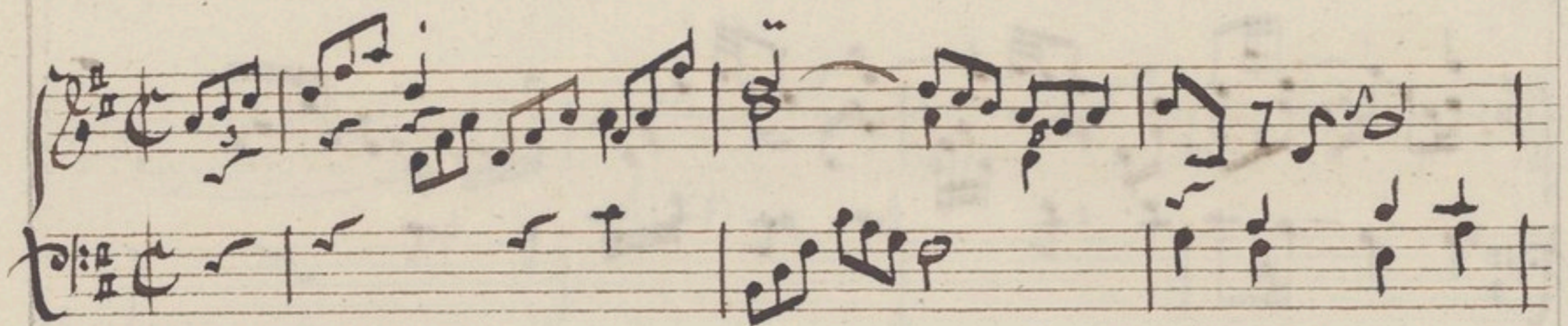


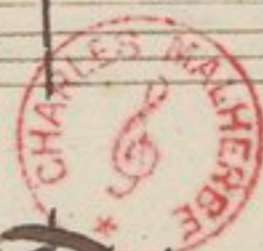
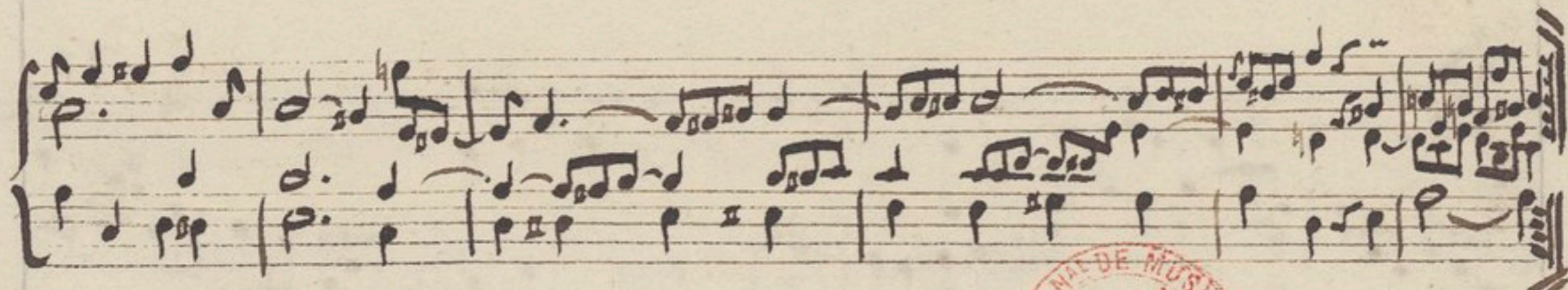
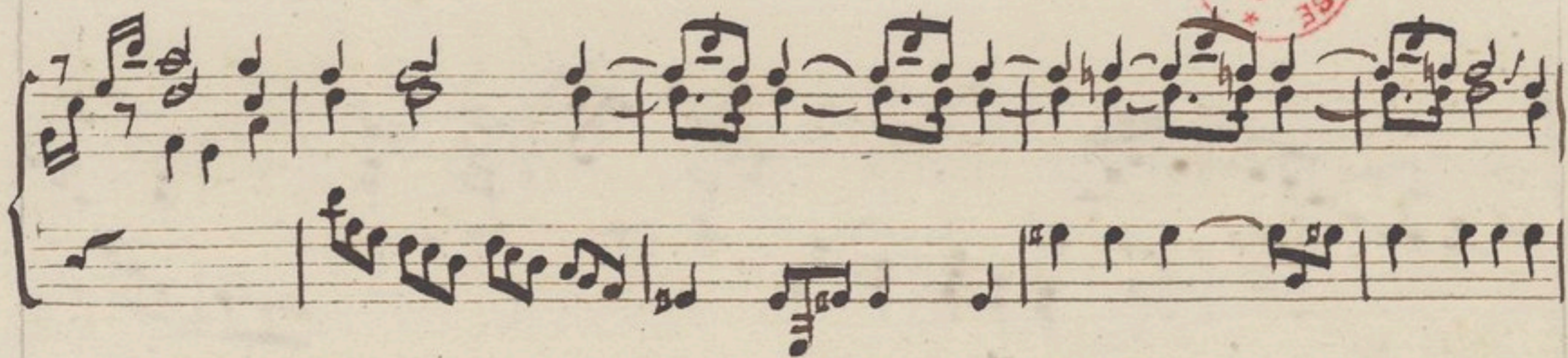
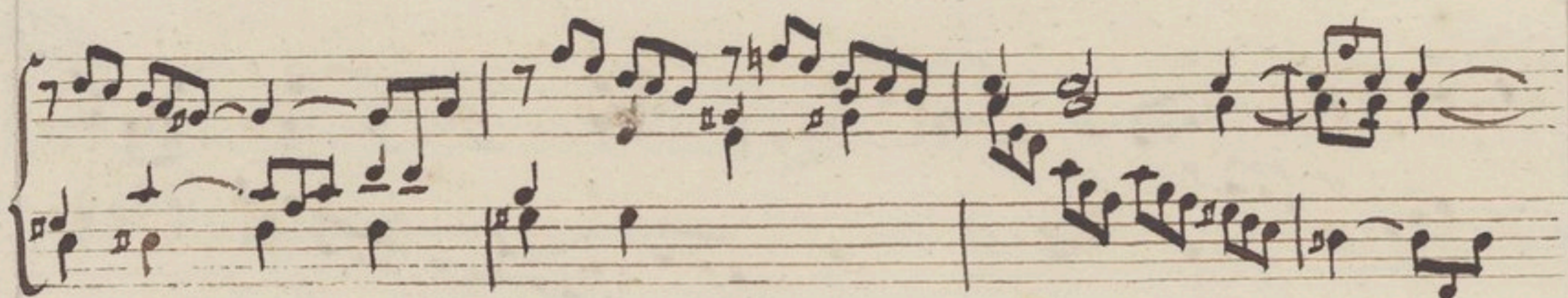
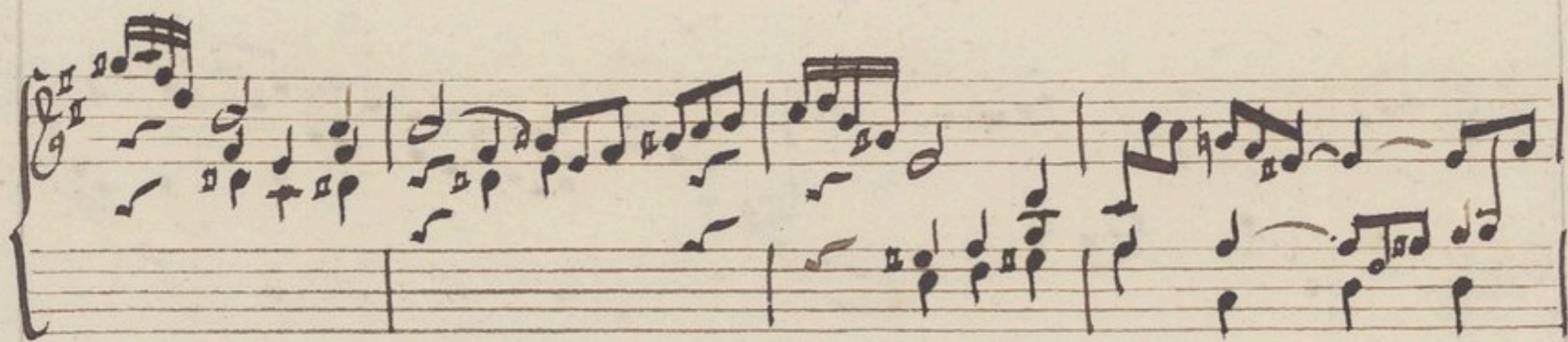
Handwritten musical notation on a five-line staff, featuring a treble clef and a key signature of one sharp (F#). The notation includes various note values, rests, and bar lines.

Handwritten musical notation on a five-line staff, featuring a treble clef and a key signature of one sharp (F#). The notation includes various note values, rests, and bar lines.

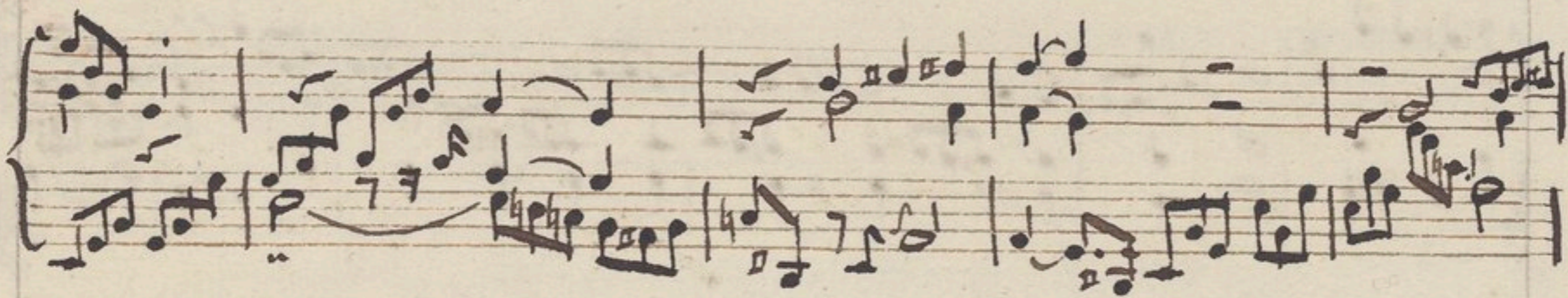
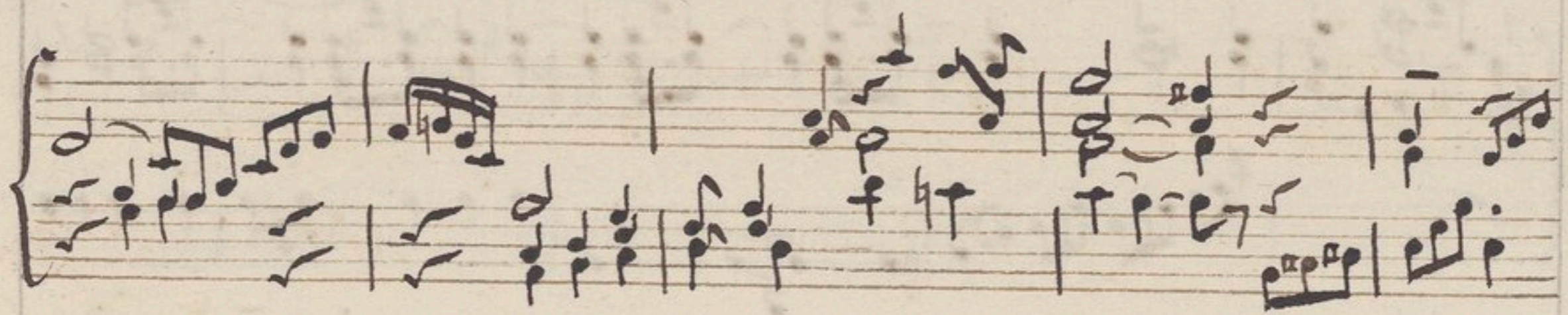
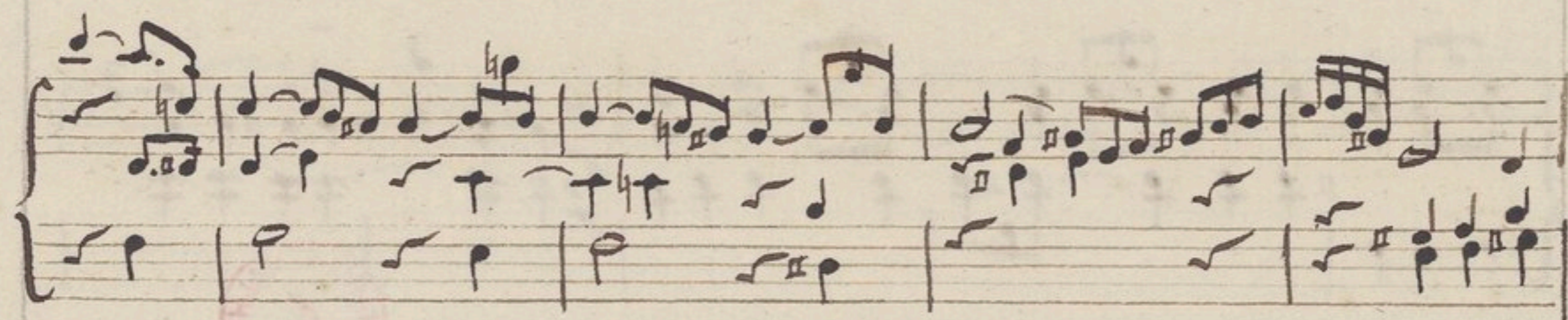
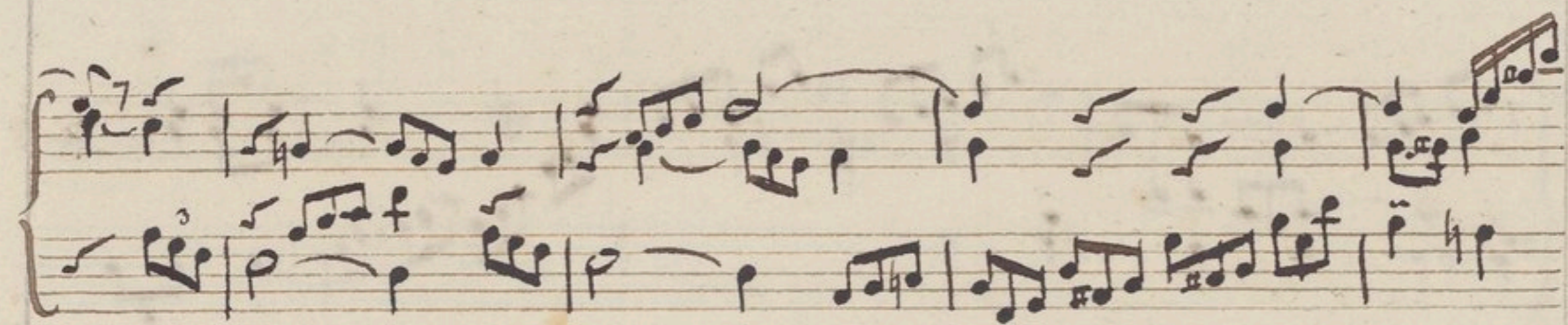
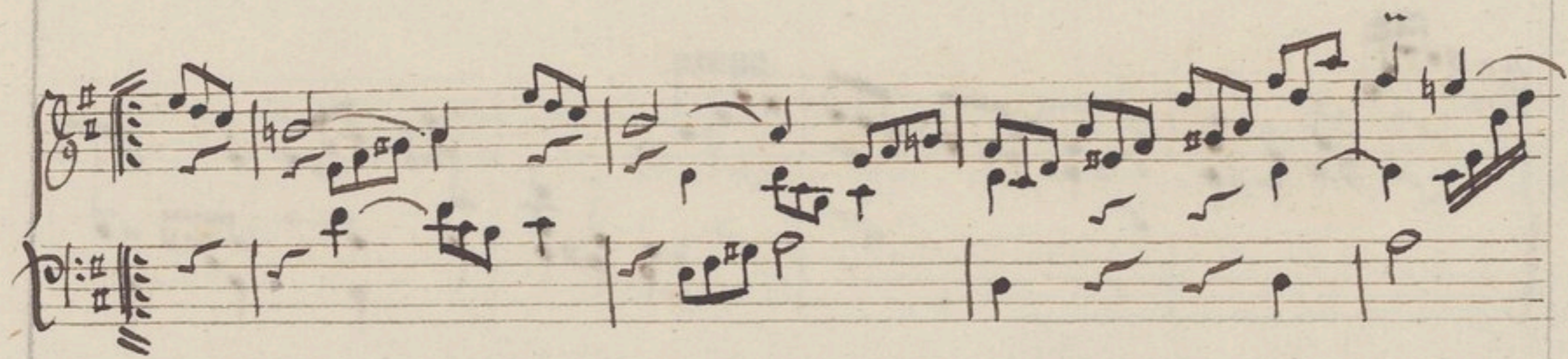


Vivace.





Si vanti.



volti subito.

Handwritten musical notation for the first system. The upper staff is in treble clef and contains a melodic line with eighth and sixteenth notes, including some accidentals. The lower staff is in bass clef and contains a bass line with fewer notes, some of which are beamed together. A brace connects the two staves.

Handwritten musical notation for the second system. The upper staff continues the melodic line with various note values and rests. The lower staff provides harmonic support with chords and single notes. A brace connects the two staves.

Handwritten musical notation for the third system. The upper staff shows a continuation of the melody with some slurs. The lower staff features a more active bass line with frequent notes. A brace connects the two staves.

Handwritten musical notation for the fourth system. The upper staff contains a series of chords and melodic fragments. The lower staff has a steady bass line with some rests. A brace connects the two staves.

Handwritten musical notation for the fifth system. The upper staff concludes the melodic phrase with a final note and a fermata. The lower staff provides a final harmonic accompaniment. A brace connects the two staves.

Il Fine .

