

Sinfonie F-Dur

(vor 1745)

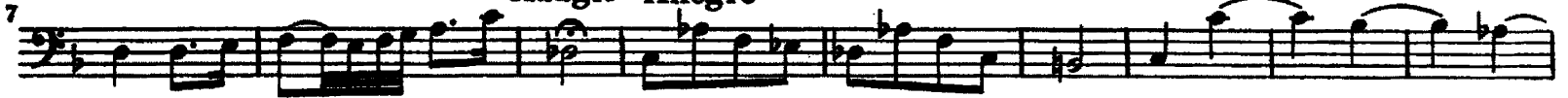
Violoncello und Kontrabaß
Kontrabaß nur bei sehr starker Besetzung
der Violinen und Bratschen

Wilhelm Friedemann Bach (1710-1784)

Vivace



Adagio Allegro



Adagio Allegro



Adagio Allegro



Kb.



Violoncello und Kontrabaß

Andante

Musical score for the Andante section, measures 1 through 19. The score is written in bass clef with a key signature of one flat (B-flat). The tempo is marked 'Andante'. The notation includes various note values, rests, and dynamic markings. Above the staff, 'Kb.' (Kontrabaß) and 'Vc.' (Violoncello) are indicated for the respective parts. A first ending bracket labeled '1' spans measures 1-4 and 19-20. Measure numbers 6, 10, 15, and 19 are placed at the beginning of their respective staves.

Allegro

Musical score for the Allegro section, measures 1 through 32. The score is written in bass clef with a key signature of one flat (B-flat) and a 2/4 time signature. The tempo is marked 'Allegro'. The notation includes various note values, rests, and dynamic markings such as *p* (piano) and *f* (forte). Above the staff, 'Kb.' and 'Vc.' are indicated. First ending brackets labeled '1' are present at measures 1-2, 15-16, and 24-25. Measure numbers 8, 15, 24, and 32 are placed at the beginning of their respective staves.

39

47

54

62

70

Menuetto 1. alternatim

9

Menuetto 2. Violoncello

9

17

Men. 1. da capo