

Viola

Johann Sebastian Bach
Orchestral Suite No. 1
In C Major, BWV 1066

Ouverture

6

11

17

22

26

33

37

40

44

48

52

2

3

Ob. I

tr

1.

2.

J.S. Bach — Suite No. 1

Viola

2

Ob. I

Musical score for Viola, measures 58-109. The score is written in G major, 3/4 time. It features a variety of rhythmic patterns, including eighth and sixteenth notes, and rests. Fingerings (1, 2) and breath marks (tr) are indicated throughout. The piece concludes with a first and second ending.

Courante

Musical score for Courante, measures 7-10. The score is written in G major, 3/4 time. It features a variety of rhythmic patterns, including eighth and sixteenth notes, and rests. Trills (tr) are indicated throughout.

Viola

15



22



Gavotte I
alternativement



7



15



Gavotte II



8



16



Gavotte I da capo

Forlane



4



8



12



16



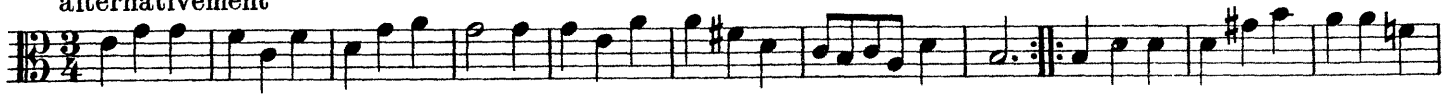
20



4

Menuet I
alternativement

Viola



12



Menuet II



18



Bourrée I
alternativement



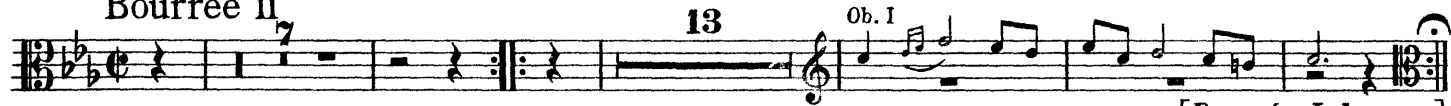
8



16



Bourrée II



[Bourrée I da capo]

Passepied I



14



Passepied II



7



15



22



Passepied I da capo