

Sonate en trio

BWV 527

J.S. BACH

Transcription
Pierre Montreuille

Vibraphone 1

Andante (♩ = 72)

7 **A**

14 **B**

22

28 **C**

34

41 **D**

49 **E**

59

66 **F**

Fine

74

82

88

92

98

106

113

Adagio e dolce (♩ = 66)

D.C. al Fine

118

123

127

131

136

141

145 **1.** **2.** **Vivace** (♩ = 144)

153

162

170 **A**

180 **B**

189

195

202 **C**

210 **D**

220

228

235

242

249

257

265

273

279

287

295

303

312

321

The image displays a musical score for the piece 'Bach BWV 527, Vibraphone I'. The score is written in treble clef with a key signature of one sharp (F#). It consists of ten staves of music, each containing measures 235 through 321. The music is characterized by frequent triplet patterns, indicated by a '3' above the notes. Several sections are marked with letters in boxes: 'E' at measure 242, 'F' at measure 249, 'G' at measure 265, 'H' at measure 279, 'I' at measure 287, and 'J' at measure 312. The notation includes various note values, rests, and dynamic markings such as 'p' and 'pp'. The piece concludes with a final measure at 321, marked with a fermata and a final bar line.

Sonate en trio

BWV 527

J.S. BACH

Transcription
Pierre Montreuille

Vibraphone 2

Andante ($\text{♩} = 72$)

8 **A**

14

21 **B**

28 **C**

36

44 **D**
Fine

53 **E**

59

63

69 **F**

75

84

G

92

100

3

107

D.C. al Fine

114 *Adagio e dolce* (♩ = 66) 3

119

A

124

128

B

131

C

135

3

139

Vivace (♩ = 144)

144

157

164

171

180

187

195

201

209

216

225

232

1.

2.

8

A

B

C

D

The image shows a musical score for a vibraphone part, measures 144 to 232. The music is in G major (one sharp) and 3/8 time. The tempo is marked 'Vivace' with a quarter note equal to 144 beats per minute. The score consists of ten staves of music. The first staff (measures 144-156) features a first and second ending. The second staff (measures 157-163) continues the melodic line. The third staff (measures 164-170) contains several triplet figures. The fourth staff (measures 171-179) includes a first ending marked 'A'. The fifth staff (measures 180-186) contains a second ending marked 'B' and continues with triplets. The sixth staff (measures 187-194) continues the melodic and triplet patterns. The seventh staff (measures 195-200) continues the piece. The eighth staff (measures 201-208) includes a first ending marked 'C'. The ninth staff (measures 209-215) continues the melodic line. The tenth staff (measures 216-224) includes a first ending marked 'D' and continues with triplets. The eleventh staff (measures 225-232) concludes the section with more triplet figures.

240

246

255

261

267

274

284

299

307

314

322

E

F

G

H

I 8

J

Detailed description: This image shows a page of musical notation for the Vibraphone II part of J.S. Bach's BWV 527. The score is written in treble clef with a key signature of one sharp (F#). It consists of ten staves of music, each starting with a measure number. The notation is highly rhythmic, featuring numerous triplet patterns (indicated by a '3' above the notes) and slurs. Several sections are marked with letters in boxes: E (measures 240-245), F (measures 246-254), G (measures 267-273), H (measures 274-283), I (measures 284-298), and J (measures 314-321). A measure rest of 8 measures is indicated at the end of the I section. The piece concludes with a double bar line at measure 322.

Sonate en trio

BWV 527

J.S. BACH

Transcription
Pierre Montreuille

Marimba

Andante (♩ = 72)

11

20

29

40

48

57

66

75

84

A

B

C

D

E

F

G

(Tr ?)

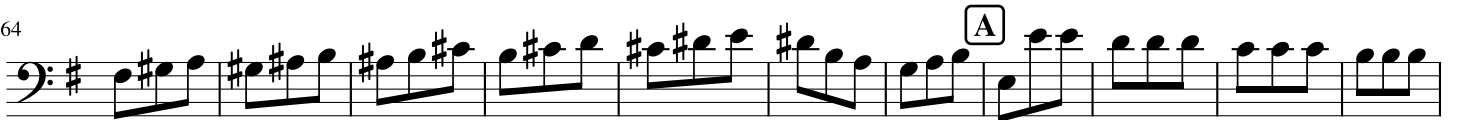
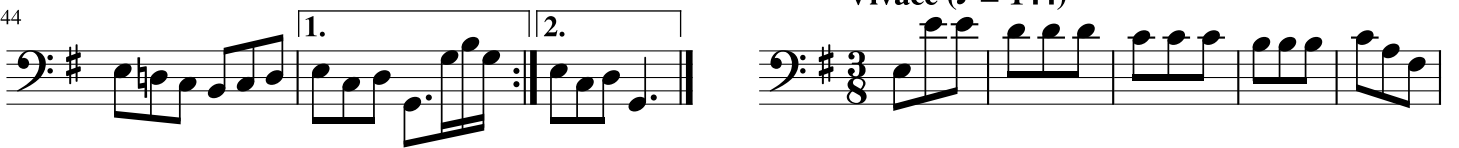
Fine



Adagio e dolce (♩ = 66)



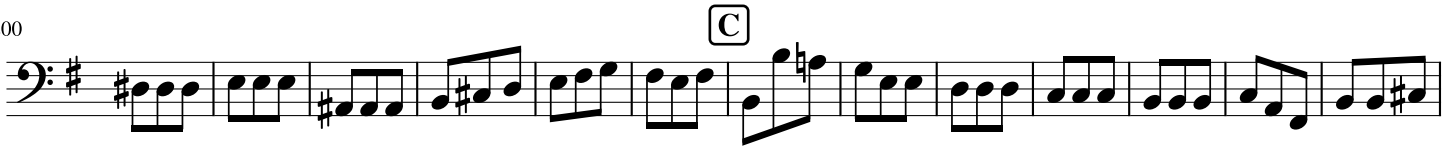
Vivace (♩ = 144)



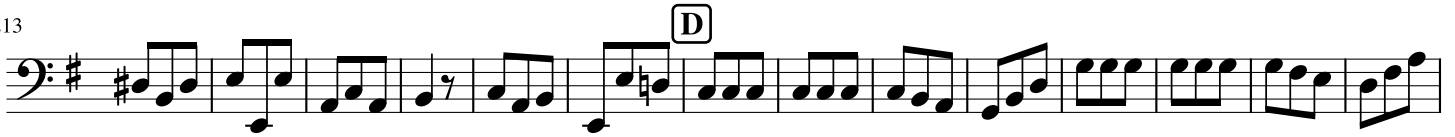
188



200



213



227



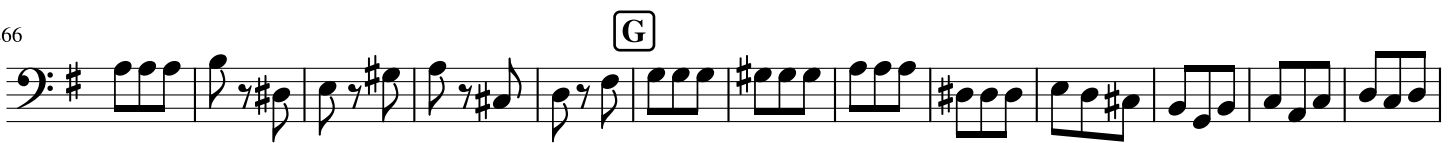
239



252



266



279



290



301



312



324

