

# Praeludium et Fuga

BWV 550

Violin I

J S BACH

Transcription  
PierreMontreuille

Prélude (♩ = 76)

2

8

9

A

3

B

C

38

41

D

50

55

59 **Grave** (♩ = 63)

**FUGA** (♩ = 88)  
Alla breve e staccato

63 **12** **A**

81 **B**

88

96 **C**

102 **D**

109 **9** **E**

124 **F**

131

137 **G**

143 H

150

156 I

163

169

175 J

181

187

193 K

201

206

Detailed description: This image shows a page of musical notation for a violin part. It consists of ten staves of music, each starting with a measure number. The key signature is one sharp (F#). The notation includes various rhythmic values such as eighth and sixteenth notes, rests, and accidentals. There are six boxed letters (H, I, J, K) placed above specific measures. The music concludes with a final cadence in measure 206.





133

138

150

156

176

183

192

200

207

# Praeludium et Fuga

BWV 550

Viola

J S BACH

Transcription  
PierreMontreuille

Prélude (♩ = 76)

2

3

10

9

23

A

29

B

34

C

41

46

D

53

C

FUGA (♩ = 88)

Alla breve e staccato

59 Grave (♩ = 63)

66

72

79

88

95

101

120

128

145

162



168



J

174

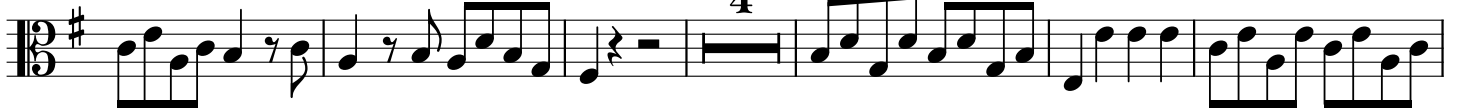


181



K

187



197



203



209



# Praeludium et Fuga

BWV 550

Violoncello

J S BACH

Transcription  
PierreMontreuil

Prélude (♩ = 76)

3

7

13

16

19

22

31

35

A

B

C

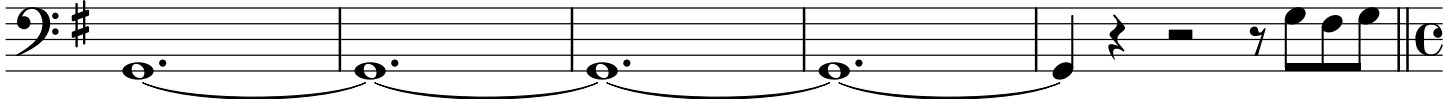
41 D




47



54




59 **Grave** (♩ = 63) **FUGA** (♩ = 88)  
*Alla breve e staccato* 20 B



87



93




99 C 6 D



111 11



127 F



133



139 **G** **H**

147 *tr*

153 **I** 8

168

175 **J**

181

187

194 **K**

200

206