

J.S. Bach
St. John Passion

Nº1. Chor.

VIOLA.

The image displays a musical score for the Viola part of the first chorus from J.S. Bach's St. John Passion. The score is written in 3/8 time with a key signature of one flat (B-flat). It begins with a dynamic marking of *f* (forte). The notation consists of eleven staves of music, each starting with a measure number in a small box: 5, 8, 11, 15, 19, 22, 26, 30, 33, 38, and 41. The music features a variety of rhythmic patterns, including eighth and sixteenth notes, often beamed together. There are several slurs and phrasing marks throughout. Section markers 'A', 'B', and 'C' are placed above the staves at measures 22, 33, and 41 respectively. The score concludes with a final measure on the 41st staff.

VIOLA.

44

48

51

55

59

63

67

70

73

76

79

84

87

92

Da Capo.

VIOLA.

Nº 2. Recit.
16

Wen su.chet ihr? Sie ant.wor.te. ten *f*

Nº 3. Chor.

Nº 4. Recit.
7

Wen su.chet ihr? Sie a.ber

Nº 5. Chor.
31

f

Nº 6. Recit.

Nº 7. Choral.
4

p

Nº 8. Recitativ.

... den mir mein Vater gegeben hat?

Nº 9. Choral.

Nº 10. Recitativ. Nº 11. Arie (für Alt) tacet.

Nº 12. Recitativ. Nº 13. Arie (für Sopran) tacet.

Nº 14. Recit.
44

Der sel. bi. ge Jun. ger war dem was schlä. gest du mich?

Nº 15. Choral.

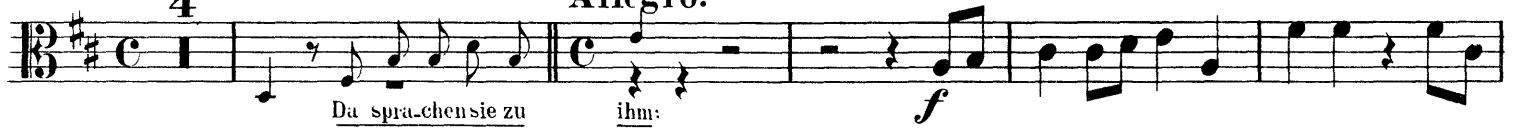


Nº 16. Recit.

4

Nº 17. Chor.

Allegro.

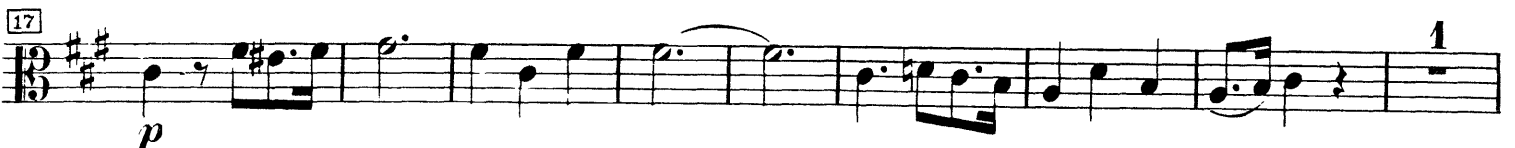


Nº 18. Recit.



Nº 19. Arie (für Tenor.)

Tutti.



VIOLA.

26 B C

35 D

43 E

50

59 F f p

66 G

74 H

80 I

86 f

Nº 20. Choral.

6

11

Ende des ersten Teils.

Zweiter Teil.

Nº 21. Choral.

Musical notation for Choral No. 21, measures 1-12. The piece is in 3/8 time and C major. It features a melodic line with various ornaments and rests.

Nº 22. Recit.

Nº 23. Chor.

Musical notation for Recitativo No. 22 and Choral No. 23, measures 9-36. The recitativo is in 3/8 time and C major, with lyrics: "Sie antwor-te-ten und sprachen zu ihm". The choral section is in 3/8 time and C major, marked *ff*. It includes sections labeled A, B, and C.

Nº 24. Recit.

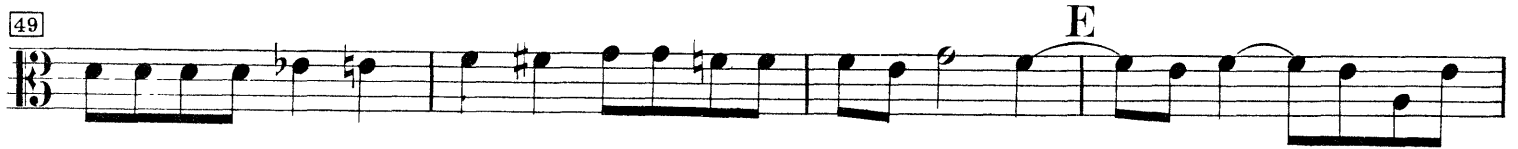
Musical notation for Recitativo No. 24, measures 36-38. The piece is in 3/8 time and C major, marked *tr*. It concludes with a triplet of notes.

VIOLA.

Nº 25. Chor.

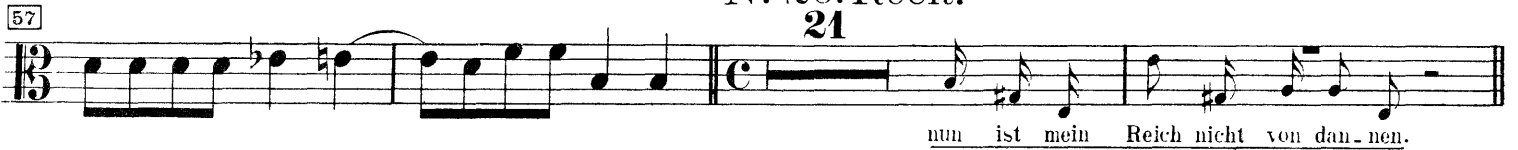
42 

45 

49 

53 

Nº 26. Recit.

57 

Nº 27. Choral.



6 

Nº 28. Recit.

18 

Nº 29. Chor.



Nº 30. Recit.

21 

*) Nº 31. Arioso (für Bass.)

Adagio.



4 

(*) Original: Liuto (Laute)

VIOLA.

7

10 B

13

16

No 32. Arie (für Tenor.)

Viola I Solo.
p
con Sordino

Viola II Solo.
p
con Sordino

3

5 A

9 B

VIOLA.

12

Measures 12-13. The system begins with a common time signature 'C'. The music features a complex texture with multiple voices in both staves, including sixteenth-note patterns and slurs.

14

Measures 14-17. The music continues with intricate sixteenth-note passages and slurs. A fermata is present over the final measure of the system.

18

Measures 18-20. The system is marked with a 'D' time signature. It features dense sixteenth-note textures with various slurs and articulations.

20

Measures 20-21. The music continues with sixteenth-note patterns and slurs, maintaining the complex texture.

21

Measures 21-23. The system is marked with an 'E' time signature. It includes the word '(Fine.)' written below the notes in both staves. The music concludes with sixteenth-note passages and slurs.

23

Measures 23-25. The system continues with sixteenth-note textures and slurs, ending with a fermata over the final measure.

VIOLA.

26 F

1

29 G

tr *tr*

31 H

tr

33

36 I

38

40 K

Da Capo.

VIOLA.

Nº 33. Recit.

Nº 34. Chor.

4
und sprachen:

9

13

f

Nº 35. Recit.

Nº 36. Chor.

11
und die Die-ner sa-hen, schrieen sie und sprachen:

16

31

35 A

39 B

44 C

48

Nº 37. Recit.

Nº 38. Chor.

3
die Ju-denantwor-te-ten ihm:

52

62 D

68 E

VIOLA.

73 

79 

85 

89 **Nº 39. Recit.** **16** **Nº 40. Choral.**

 wie er ihn los-liesse.

4 **Nº 41. Recit.**

 Die Ju-den a-ber schrien und

2 **Nº 42. Chor.** **1**

 sprachen: *f*

8 

12 

17 

21 

27 

32 **Nº 43. Recit.** **9**

 das ist eu-er König. Sie schrieen

VIOLA.

45 N^o 44. Chor.

51 E

57 F

61

65 G

68

71 N^o 45. Recit. N^o 46. Chor.

die Ho-chen - prie-ster ant-wor-te-ten:

77 N^o 47. Recit. N^o 48. Arie (mit Chor.)

83

89 (Fine.) pp

95 4

101 p

VIOLA.

41

50

A

61

1

f

74

2

pp

84

91

B

102

5

pp

116

f

pp

127

136

4

p

149

158

C

168

1

f

Dal Segno.

VIOLA.

Nº 49. Recit.
16

Da spra - chen die Ho - hen - prie - ster der Ju - den zu Pi - la - to:

18 N° 50. Chor.

f

A

C

Nº 51. Recit.

2

ich ge - schrie - hen.

Nº 52. Choral.

4

Nº 53. Recit.

8

da spra - chen sie un - ter - ein - an - der:

Nº 54. Chor.

1

f

12

A 1

B

26

30 *tr* C

35

39 D

43 *tr* E

48

53 F

57

No. 55. Recit.

62 *tr* 18

das ist die ne Mutter!

No. 56. Choral.

6

12

18

VIOLA.

Nº 57. Recit.
13

Nº 58. Arie (für Alt.)
Molto Adagio.

Es ist vollbracht! 19 Der

Alla breve.

20 Held aus Ju - da siegt mit *f* *p*

23 *f* *p* *f*

26 *p* F

29 *f* G

33 *p*

36 *f* Adagio 4

Nº 59. Recitativ. Nº 60. Arie (mit Chor) tacet.

Nº 61. Recit.

Und sie - he da der Vor - hang im Tem - pel zer - riss in zwei Stück, von

3 o - ben an bis un - ten aus. Und die Er - de er - be - be - te, und die Fel - sen zer -
(tremolando)

VIOLA.

5

ris - sen, und die Grä - ber tha - ten sich auf und stunden auf vie - le Lei - ber der Hei - li - gen.

Nº 62. Arioso (für Tenor.)

p

5

7

Adagio.

Nº 63. Arie (für Sopran) tacet.

Nº 64. Recitativ.

..... in welchen sie gestochen haben!“

Nº 65. Choral.

6

11

Nº 66. Recit.

16

23

die - weil das Grab na - - he war.

No 67. Chor.

VIOLA.

Musical score for Viola, No. 67. Chor. The score consists of ten staves of music in 3/4 time, starting with a piano (*p*) dynamic. The music features various ornaments and articulations. Measure numbers 12, 26, 39, 50, 64, 76, 90, 103, and 114 are indicated at the beginning of their respective staves. Letters A through M are placed above the notes to indicate specific ornaments or articulations. The piece concludes with a double bar line and a repeat sign.

(Fine.)

No 68. Choral.

Dal Segno.

Musical score for Viola, No. 68. Choral. The score consists of three staves of music in 3/4 time. The music is characterized by a steady eighth-note accompaniment. Measure numbers 7 and 11 are indicated at the beginning of the first and second staves respectively. The piece concludes with a double bar line and a repeat sign.

Ende.