

Double Concerto

BWV 1043

FLUTE 1

J. S. BACH

Transcription :

Pierre Montreuille

Vivace (♩ = 96)

4

f

8

tr

12

7

15

18

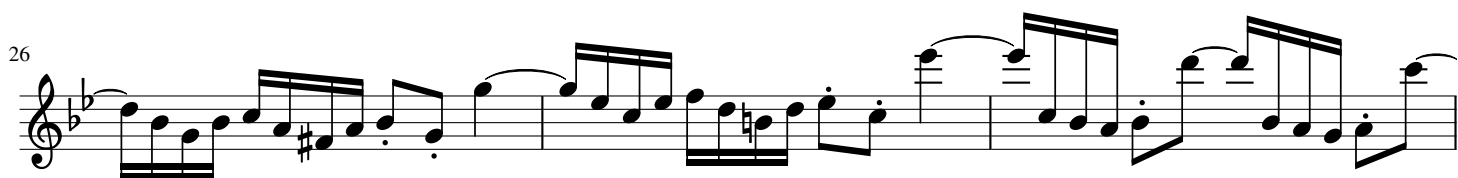
tr

mf

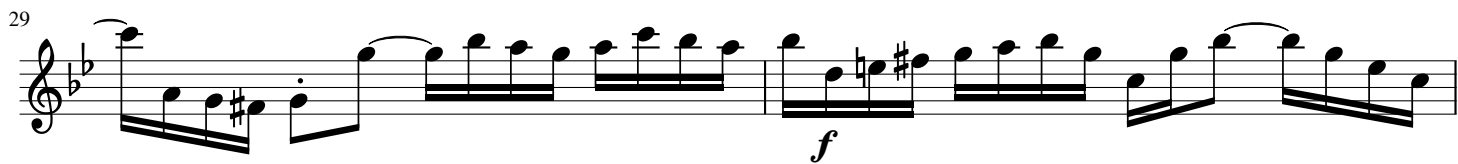
22

24

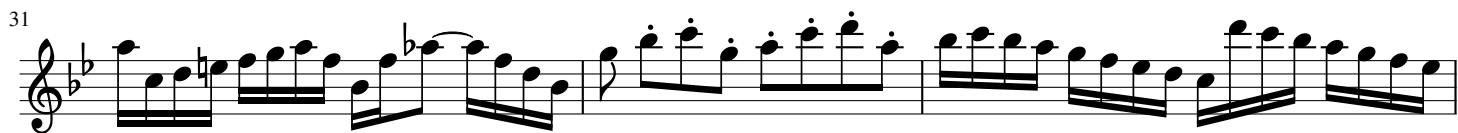
26



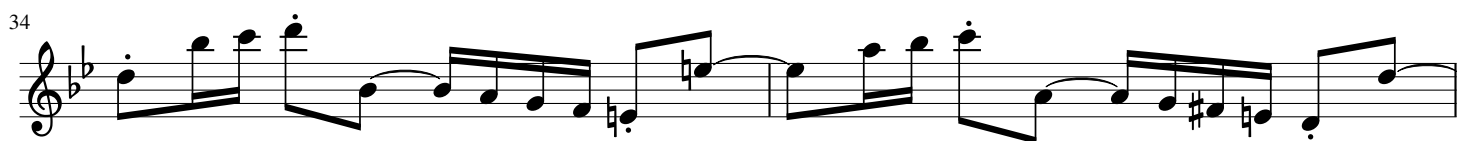
29



31



34



36



41



44



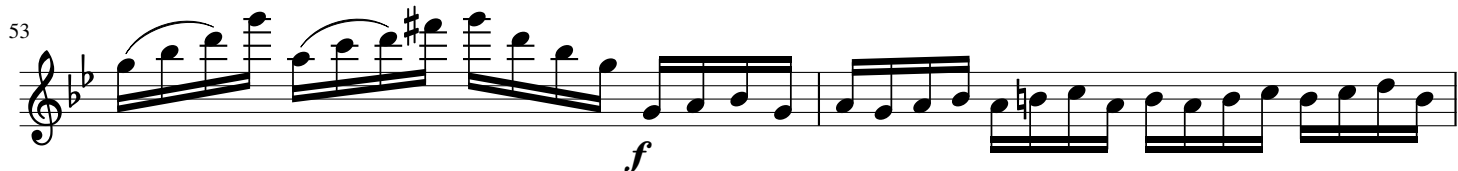
46



50



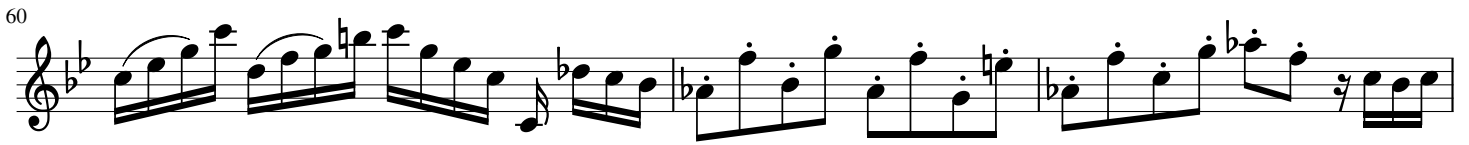
53



55



58 

60 

63 

66 

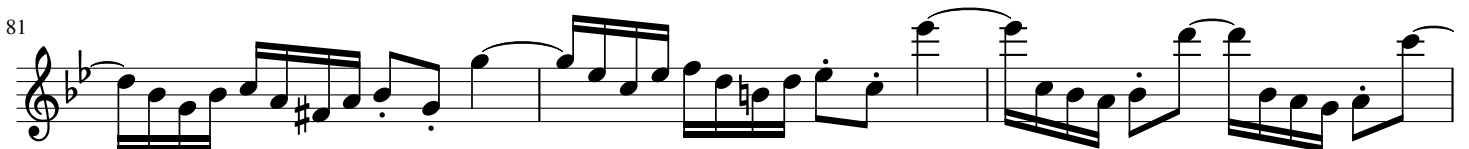
69 

72 

74 

77 

79 

81 

84

f

87

12/8

Largo ma non tanto (♩ = 94)

89

2

mf

94

96

99

100

101

102

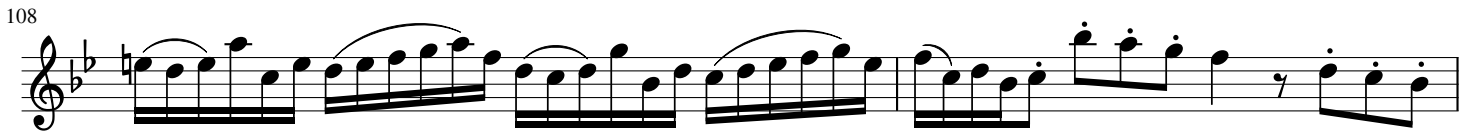
103



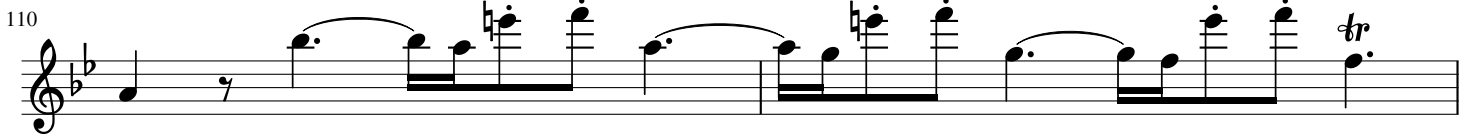
106



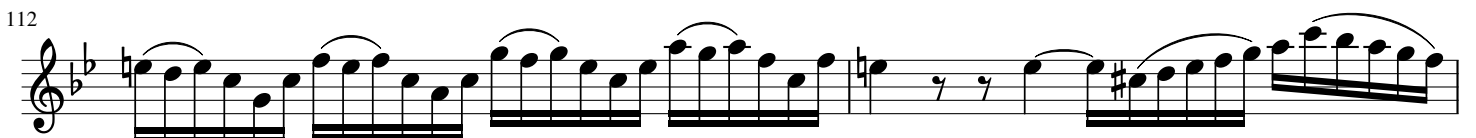
108



110



112



114



116



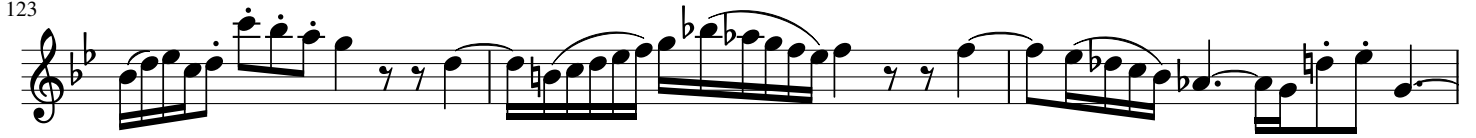
117



119



123



126



128



131



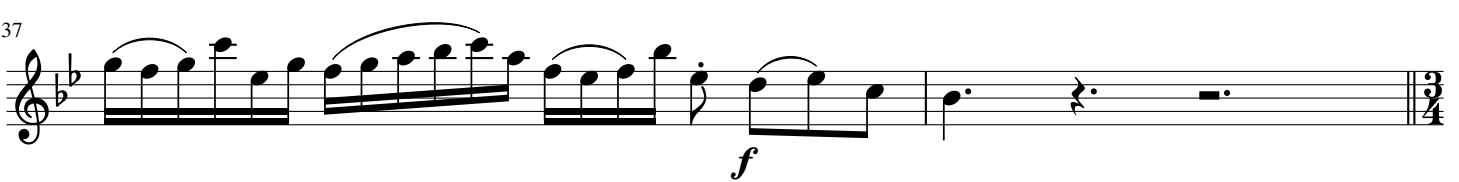
134



136

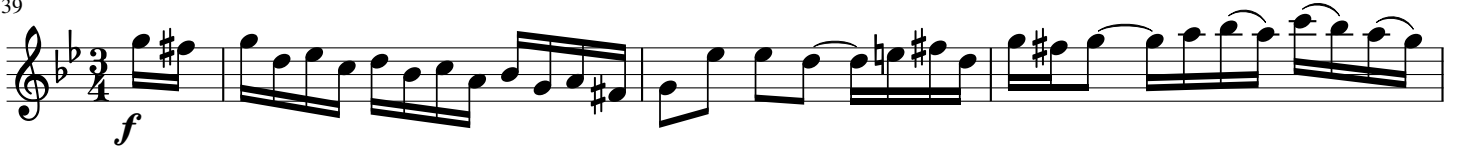


137



Allegro (♩ = 80)

139



143



148



151

153

155

158

mf

162

165

168

171

174

178

182

186

189

192

194

197

200

204

206

208

211

213

218

223

227

231

234

241

244

247

250

253



259



263



267



271



275



279



282



285



287



290



Detailed description: This image shows a page of musical notation for a piece in G minor, BWV 1043. The notation is written on a single treble clef staff. The key signature has two flats (B-flat and E-flat). The piece is in 3/4 time. The page contains ten systems of music, each starting with a measure number. The first system (measures 253-258) features a melodic line with eighth and sixteenth notes, including a trill in measure 254. The second system (measures 259-262) continues the melodic development. The third system (measures 263-266) shows a more active melodic line. The fourth system (measures 267-270) includes a trill in measure 267. The fifth system (measures 271-274) features a melodic line with eighth notes. The sixth system (measures 275-278) continues the melodic line. The seventh system (measures 279-281) includes a trill in measure 279. The eighth system (measures 282-284) features a melodic line with eighth notes and triplets. The ninth system (measures 285-286) continues the melodic line. The tenth system (measures 287-288) features a melodic line with eighth notes and triplets. The eleventh system (measures 289-290) concludes the piece with a trill in measure 289 and a final cadence in measure 290.