

Guitarra 1

BWV - 1080

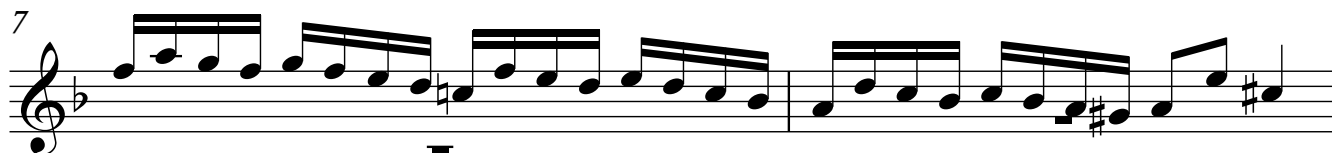
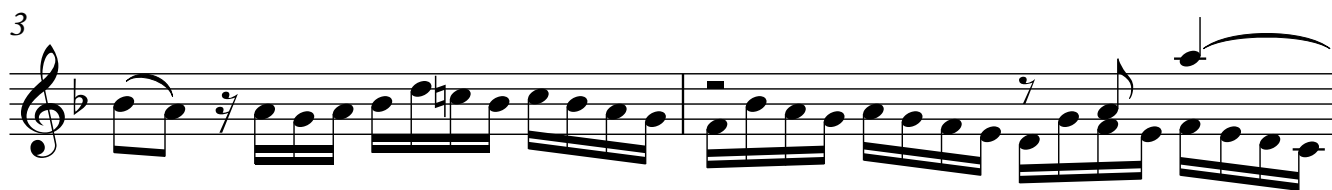
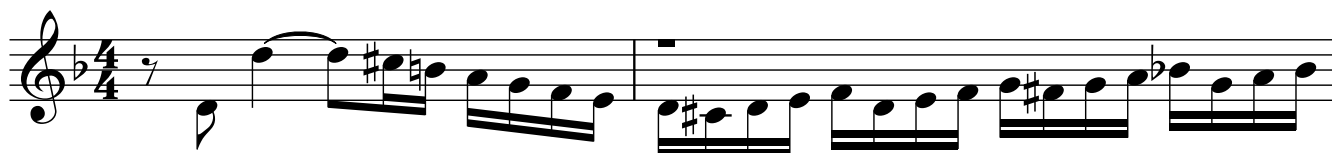
EL ARTE DE LA FUGA

9.- FUGA

TRANSCRIPCIÓN: LUIS ALVAREZ

J. S. BACH
(1685-1750)

♩ = 80



11

Musical notation for measures 11 and 12. Measure 11 contains a complex rhythmic pattern with eighth and sixteenth notes, including a triplet of eighth notes. Measure 12 continues with similar rhythmic patterns and includes a fermata over the final note.

13

Musical notation for measures 13 and 14. Measure 13 features a series of eighth notes with a fermata over the final note. Measure 14 continues with eighth notes and includes a fermata over the final note.

15

Musical notation for measures 15 and 16. Measure 15 consists of eighth notes with a fermata over the final note. Measure 16 continues with eighth notes and includes a fermata over the final note.

17

Musical notation for measures 17 and 18. Measure 17 features eighth notes with a fermata over the final note. Measure 18 continues with eighth notes and includes a fermata over the final note.

19

Musical notation for measures 19 and 20. Measure 19 consists of eighth notes with a fermata over the final note. Measure 20 continues with eighth notes and includes a fermata over the final note.

21

Musical notation for measures 21 and 22. Measure 21 features eighth notes with a fermata over the final note. Measure 22 continues with eighth notes and includes a fermata over the final note.

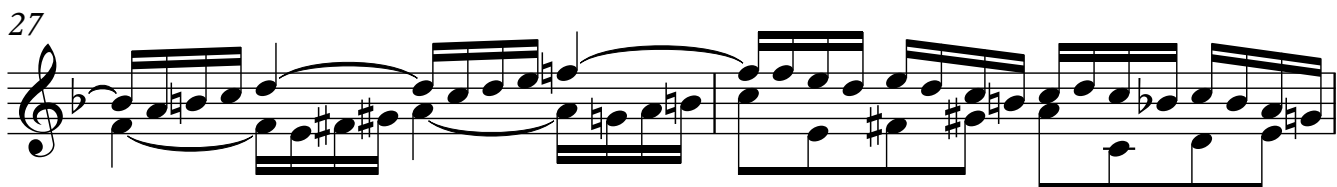
23

Musical notation for measures 23 and 24. Measure 23 consists of eighth notes with a fermata over the final note. Measure 24 continues with eighth notes and includes a fermata over the final note.

25



27



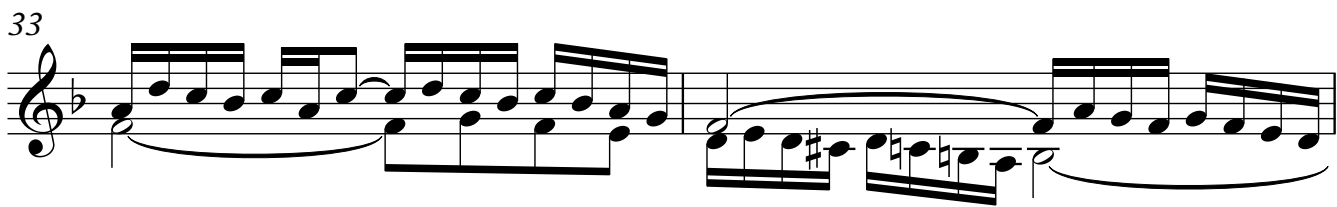
29



31



33



35



37



Guitarra 1

39

41

43

45

47

49

51

53

Musical notation for measures 53 and 54. Measure 53 contains a complex rhythmic pattern with eighth and sixteenth notes, including a grace note. Measure 54 features a half note followed by a quarter note and a half note.

55

Musical notation for measures 55 and 56. Measure 55 has a half note, a quarter note, and a half note. Measure 56 contains a half note, a quarter note, and a half note, ending with a grace note.

57

Musical notation for measures 57 and 58. Measure 57 is a complex rhythmic passage with eighth and sixteenth notes. Measure 58 features a half note, a quarter note, and a half note.

59

Musical notation for measures 59 and 60. Measure 59 contains a half note, a quarter note, and a half note. Measure 60 has a half note, a quarter note, and a half note, ending with a grace note.

61

Musical notation for measures 61 and 62. Measure 61 features a half note, a quarter note, and a half note. Measure 62 contains a half note, a quarter note, and a half note.

63

Musical notation for measures 63 and 64. Measure 63 has a half note, a quarter note, and a half note. Measure 64 contains a half note, a quarter note, and a half note.

65

Musical notation for measures 65 and 66. Measure 65 features a half note, a quarter note, and a half note. Measure 66 contains a half note, a quarter note, and a half note.