

Guitarra 1

BWV - 1068

SUITE N° 3

1.- OBERTURA

TRANSCRIPCIÓN: LUIS ALVAREZ

J. S. BACH
(1685-1750)

♩ = 80



3



5



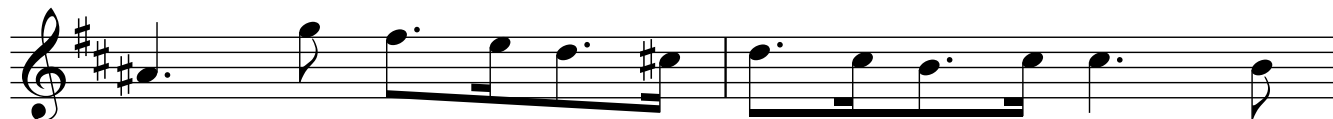
7



9



11



13

15

17

19

21

23

25

27

29

31

33

35

37

39

41

43

45

47

49

51

53

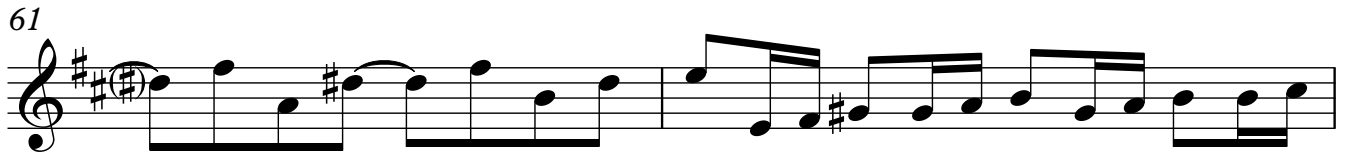
55

57

59

f

61



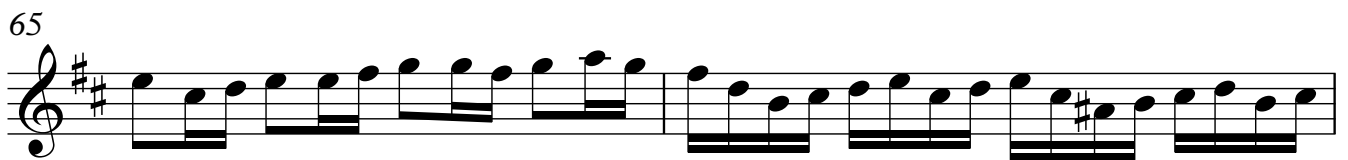
Measures 61-62: The first staff contains two measures of music. Measure 61 begins with a treble clef, a key signature of one sharp (F#), and a common time signature (C). The first measure has a whole rest. The second measure contains a quarter rest followed by a quarter note G4. Measure 62 contains a quarter note A4, a quarter note B4, a quarter note C5, a quarter note D5, a quarter note E5, a quarter note F#5, a quarter note G5, a quarter note A5, a quarter note B5, and a quarter note C6.

63



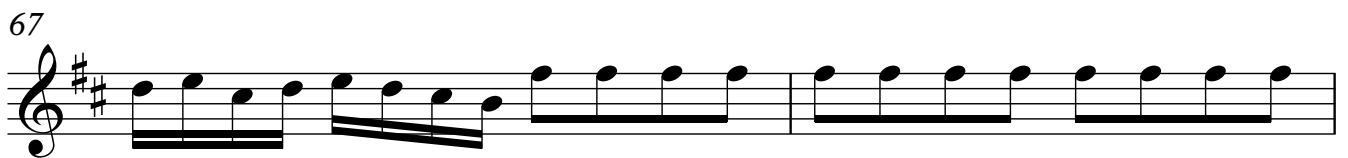
Measures 63-64: The second staff contains two measures of music. Measure 63 contains a quarter note G4, a quarter note A4, a quarter note B4, a quarter note C5, a quarter note D5, a quarter note E5, a quarter note F#5, a quarter note G5, a quarter note A5, a quarter note B5, and a quarter note C6. Measure 64 contains a quarter note G5, a quarter note A5, a quarter note B5, a quarter note C6, a quarter note B5, a quarter note A5, a quarter note G5, a quarter note F#5, a quarter note E5, a quarter note D5, a quarter note C5, a quarter note B4, and a quarter note A4.

65



Measures 65-66: The third staff contains two measures of music. Measure 65 contains a quarter note G4, a quarter note A4, a quarter note B4, a quarter note C5, a quarter note D5, a quarter note E5, a quarter note F#5, a quarter note G5, a quarter note A5, a quarter note B5, and a quarter note C6. Measure 66 contains a quarter note G5, a quarter note A5, a quarter note B5, a quarter note C6, a quarter note B5, a quarter note A5, a quarter note G5, a quarter note F#5, a quarter note E5, a quarter note D5, a quarter note C5, a quarter note B4, and a quarter note A4.

67




Measures 67-68: The fourth staff contains two measures of music. Measure 67 contains a quarter note G4, a quarter note A4, a quarter note B4, a quarter note C5, a quarter note D5, a quarter note E5, a quarter note F#5, a quarter note G5, a quarter note A5, a quarter note B5, and a quarter note C6. Measure 68 contains a quarter note G5, a quarter note A5, a quarter note B5, a quarter note C6, a quarter note B5, a quarter note A5, a quarter note G5, a quarter note F#5, a quarter note E5, a quarter note D5, a quarter note C5, a quarter note B4, and a quarter note A4.

69



Measures 69-70: The fifth staff contains two measures of music. Measure 69 contains a quarter note G4, a quarter note A4, a quarter note B4, a quarter note C5, a quarter note D5, a quarter note E5, a quarter note F#5, a quarter note G5, a quarter note A5, a quarter note B5, and a quarter note C6. Measure 70 contains a quarter note G5, a quarter note A5, a quarter note B5, a quarter note C6, a quarter note B5, a quarter note A5, a quarter note G5, a quarter note F#5, a quarter note E5, a quarter note D5, a quarter note C5, a quarter note B4, and a quarter note A4.

71



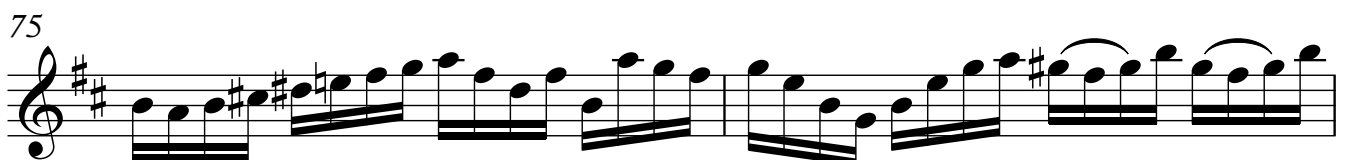
Measures 71-72: The sixth staff contains two measures of music. Measure 71 contains a quarter note G4, a quarter note A4, a quarter note B4, a quarter note C5, a quarter note D5, a quarter note E5, a quarter note F#5, a quarter note G5, a quarter note A5, a quarter note B5, and a quarter note C6. Measure 72 contains a quarter note G5, a quarter note A5, a quarter note B5, a quarter note C6, a quarter note B5, a quarter note A5, a quarter note G5, a quarter note F#5, a quarter note E5, a quarter note D5, a quarter note C5, a quarter note B4, and a quarter note A4.

73



Measures 73-74: The seventh staff contains two measures of music. Measure 73 contains a quarter note G4, a quarter note A4, a quarter note B4, a quarter note C5, a quarter note D5, a quarter note E5, a quarter note F#5, a quarter note G5, a quarter note A5, a quarter note B5, and a quarter note C6. Measure 74 contains a quarter note G5, a quarter note A5, a quarter note B5, a quarter note C6, a quarter note B5, a quarter note A5, a quarter note G5, a quarter note F#5, a quarter note E5, a quarter note D5, a quarter note C5, a quarter note B4, and a quarter note A4.

75

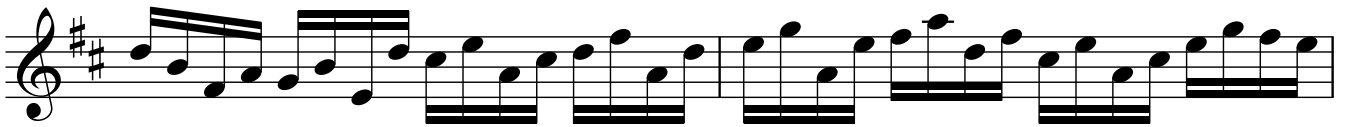


Measures 75-76: The eighth staff contains two measures of music. Measure 75 contains a quarter note G4, a quarter note A4, a quarter note B4, a quarter note C5, a quarter note D5, a quarter note E5, a quarter note F#5, a quarter note G5, a quarter note A5, a quarter note B5, and a quarter note C6. Measure 76 contains a quarter note G5, a quarter note A5, a quarter note B5, a quarter note C6, a quarter note B5, a quarter note A5, a quarter note G5, a quarter note F#5, a quarter note E5, a quarter note D5, a quarter note C5, a quarter note B4, and a quarter note A4.

77



79



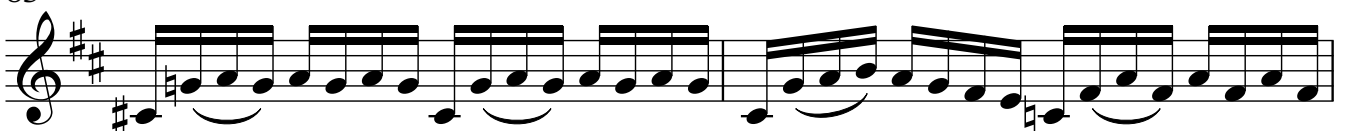
81



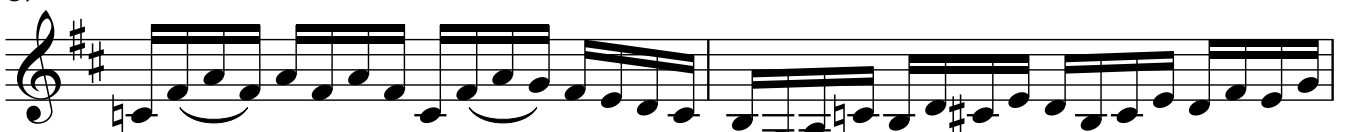
83



85



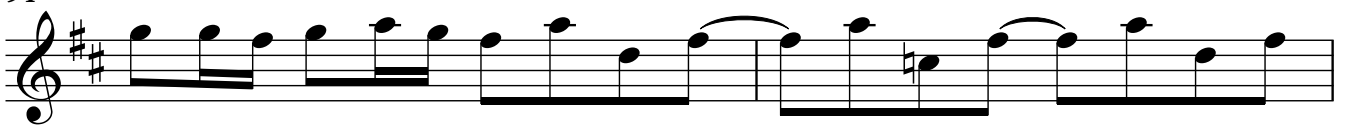
87



89



91



93

95

97

99

101

103

105

107

