

Violín 1

BWV - 1043 CONCIERTO (c)

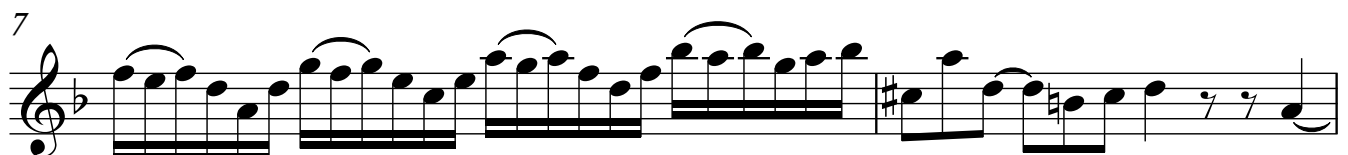
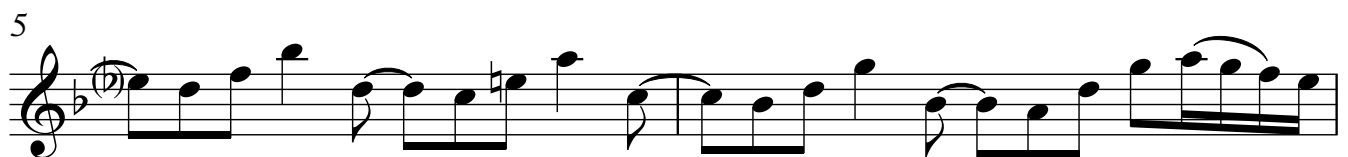
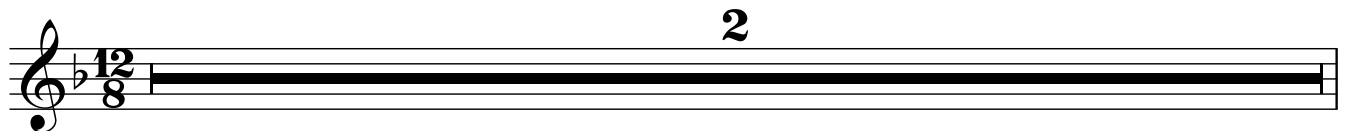
2.- LARGO

TRANSCRIPCIÓN: LUIS ALVAREZ

J. S. BACH
(1685-1750)

$\text{♩} = 45$

LARGO MA NON TANTO



11

12

13

14

15

A

17

19

20

21

23

25

B

27

29

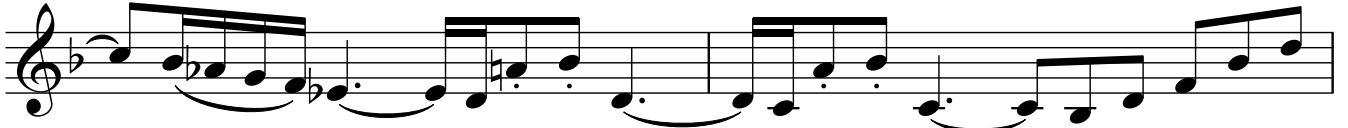
(B)

31

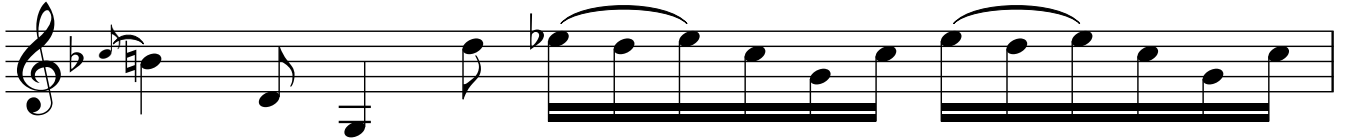
33

35

37



39



40



43



45



47



48



B

49

