

Violine II

BWV - 1042 CONCIERTO (c)

1.- ALEGRO

TRANSCRIPCIÓN: LUIS ALVAREZ

J. S. BACH
(1685-1750)

$\text{♩} = 90$

f

4

7

10

piano

13

2

17

piano

Violine II

20

f *piano*

23

piano *f*

26

f *p*

29

p

32

f

35

f

38

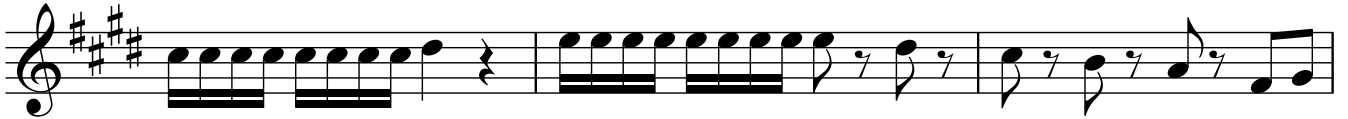
f *piano*

41

f

Violine II

44



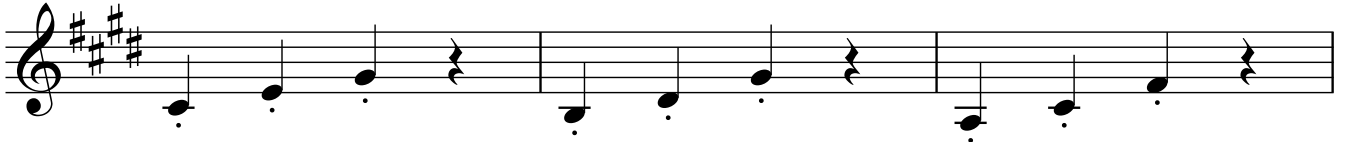
47



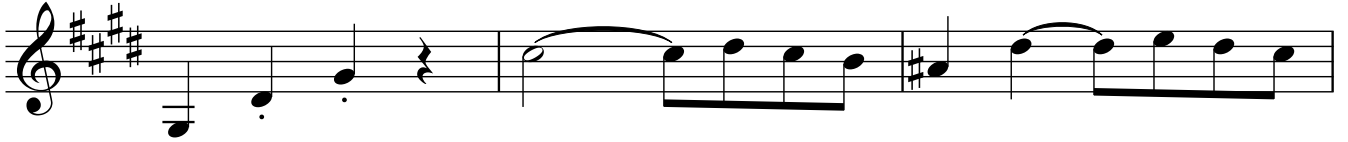
50



53



56



59



62



67

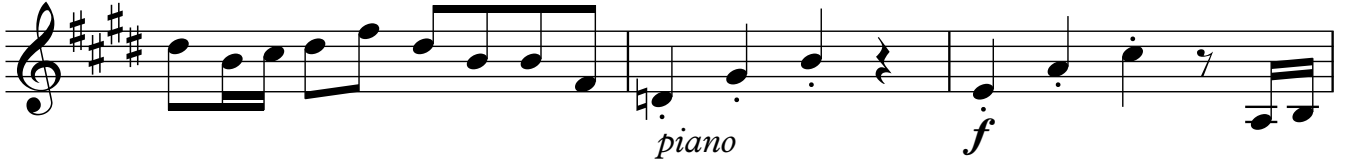


Violine II

71



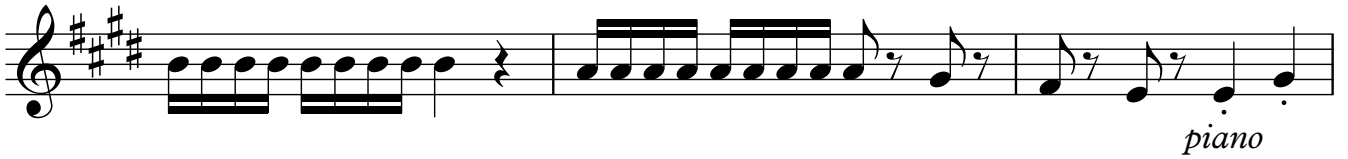
74



77



80



83



86



89



92



95 3

99 2

103 p

106 piano

109

115 forte piano forte

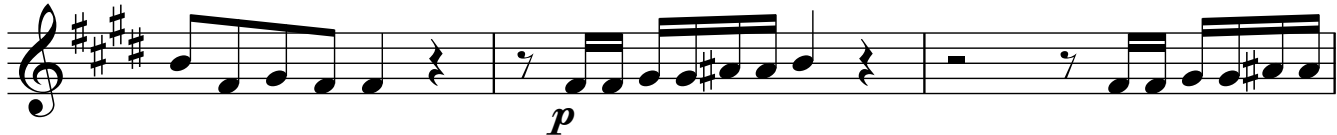
118 ♩=65 (piano)

121 rall. ♩=90
2

149



152



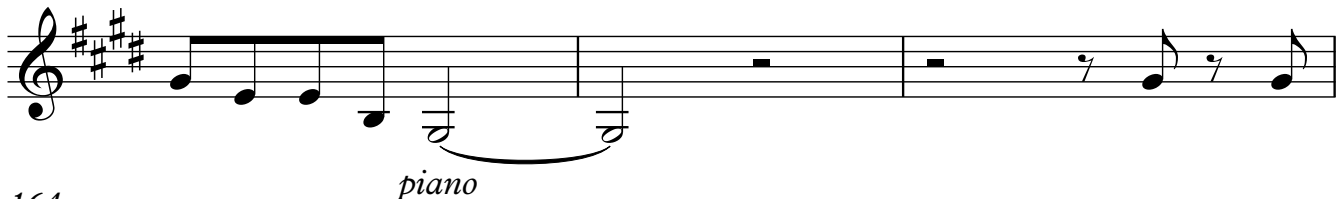
155



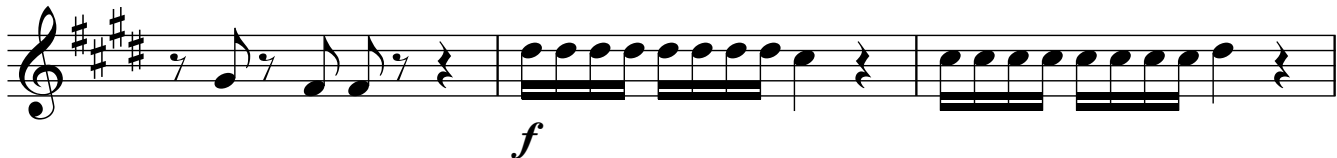
158



161



164



167



170



173

