

Guitarra 2

BWV - 1035

SONATA 6

3.- SICILIANO

TRANSCRIPCIÓN: LUIS ALVAREZ

J. S. BACH
(1685-1750)

♩=50

Musical notation for the first staff, starting with a treble clef, a key signature of three sharps (F#, C#, G#), and a 6/8 time signature. The staff contains a repeat sign followed by a series of notes and rests.

4

Musical notation for the second staff, starting with a treble clef, a key signature of three sharps (F#, C#, G#), and a 6/8 time signature. The staff contains a series of notes and rests, including a slur over a group of notes.

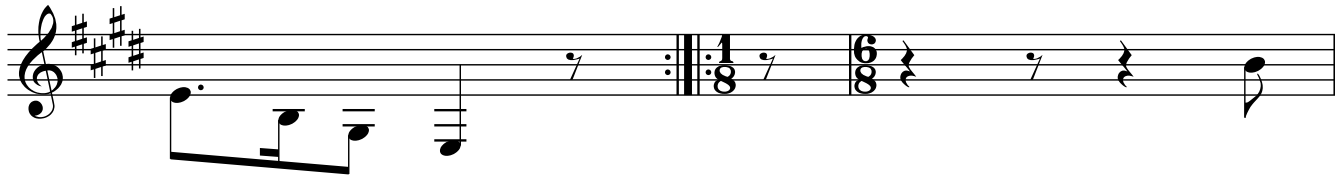
7

Musical notation for the third staff, starting with a treble clef, a key signature of three sharps (F#, C#, G#), and a 6/8 time signature. The staff contains a series of notes and rests, including a slur over a group of notes.

10

Musical notation for the fourth staff, starting with a treble clef, a key signature of three sharps (F#, C#, G#), and a 6/8 time signature. The staff contains a series of notes and rests, including a slur over a group of notes.

13



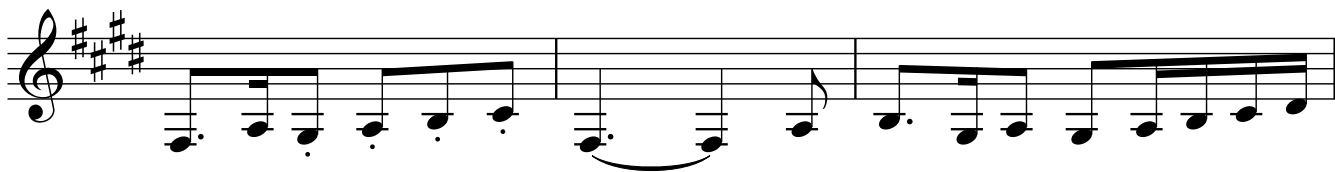
16



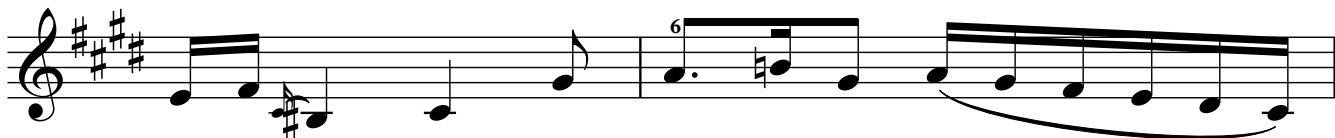
19



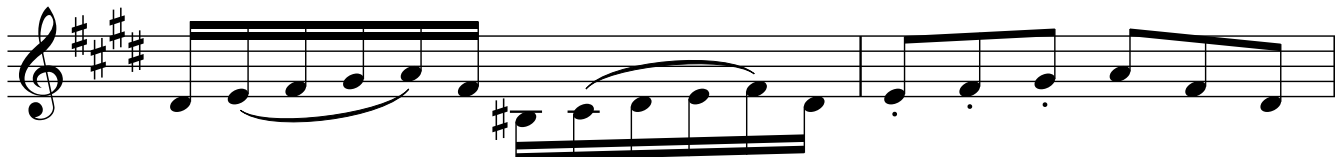
22



25



27



29

