

Guitarra 3

BWV - 1029

SONATA 3

1 - VIVACE

TRANSCRIPCIÓN: LUIS ALVAREZ

J. S. BACH
(1685-1750)

$\text{♩} = 110$

mf

2

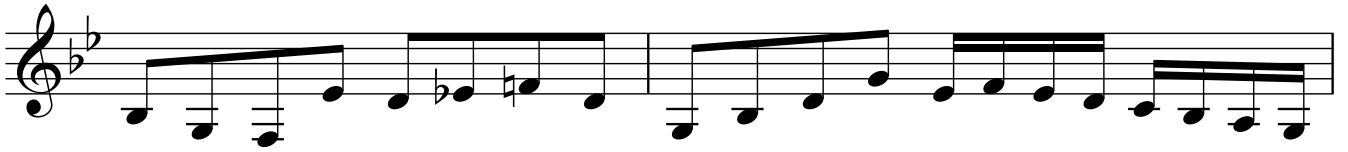
4

6

8

10

12



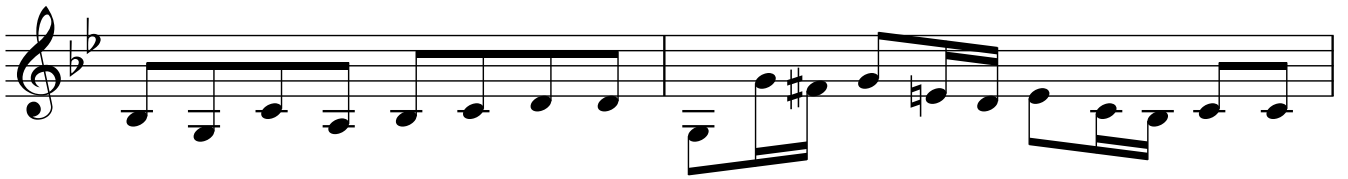
14



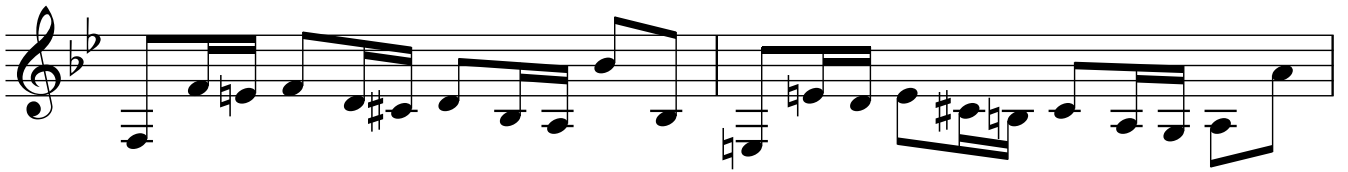
16



18



20



22



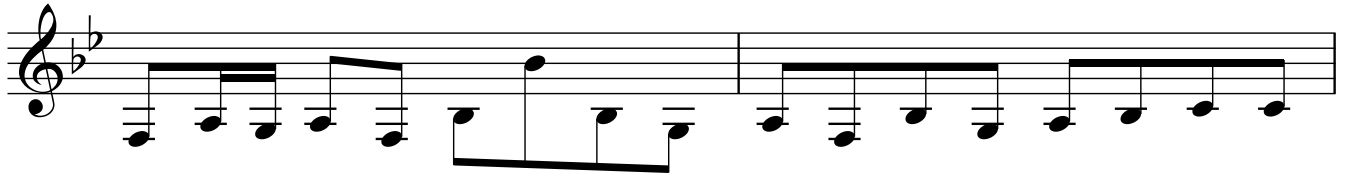
24



26



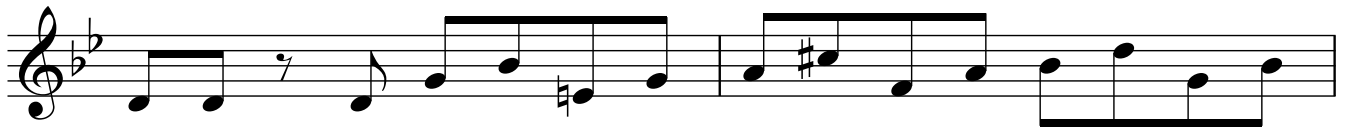
28



30



32



34



36



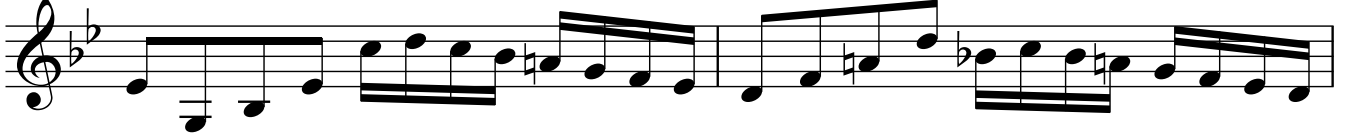
38



40



42



44



46



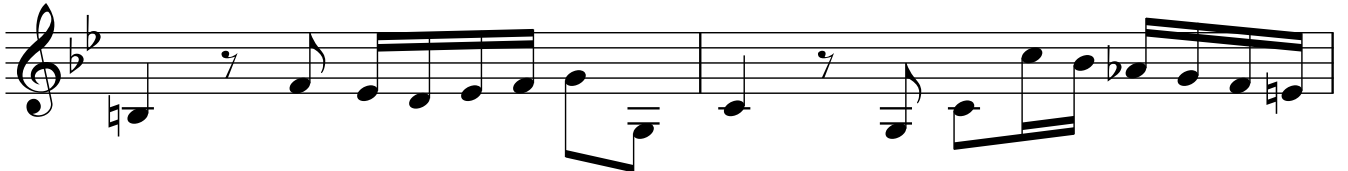
48



50



52



Guitarra 3

68

70

72

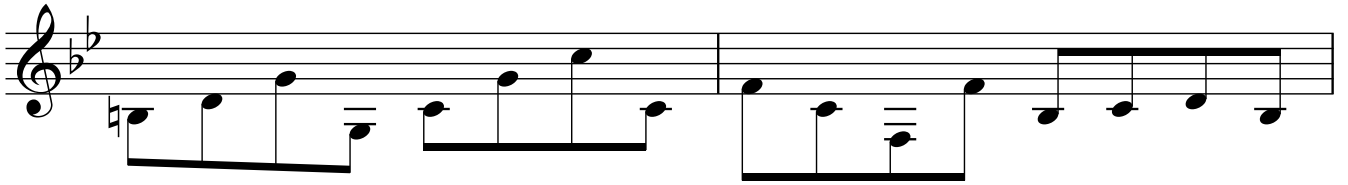
74

76

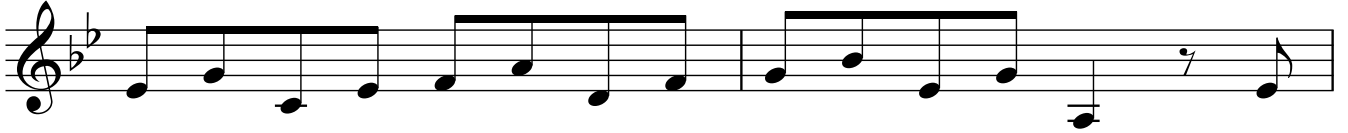
78

80

82



84



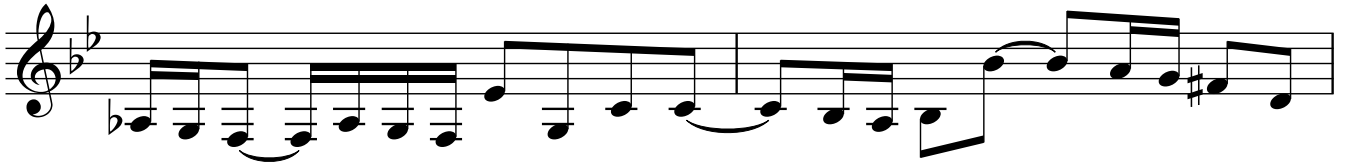
86



88



90



92



94



96

Musical staff for measure 96, featuring a treble clef, a key signature of two flats (B-flat and E-flat), and a common time signature. The staff contains a sequence of notes: a whole rest, a quarter rest, a quarter note G4, a quarter note A4, a quarter note B4, a quarter note C5, a quarter note B4, a quarter note A4, a quarter note G4, a quarter note F4, a quarter note E4, a quarter note D4, and a quarter note C4. There are some double lines under the notes, possibly indicating a specific guitar technique.

98

Musical staff for measure 98, featuring a treble clef, a key signature of two flats, and a common time signature. The staff contains a sequence of notes: a quarter note G4, a quarter note A4, a quarter note B4, a quarter note C5, a quarter note B4, a quarter note A4, a quarter note G4, a quarter note F4, a quarter note E4, a quarter note D4, and a quarter note C4.

100

Musical staff for measure 100, featuring a treble clef, a key signature of two flats, and a common time signature. The staff contains a sequence of notes: a quarter note G4, a quarter note A4, a quarter note B4, a quarter note C5, a quarter note B4, a quarter note A4, a quarter note G4, a quarter note F4, a quarter note E4, a quarter note D4, and a quarter note C4. There are some double lines under the notes.

102

Musical staff for measure 102, featuring a treble clef, a key signature of two flats, and a common time signature. The staff contains a sequence of notes: a quarter note G4, a quarter note A4, a quarter note B4, a quarter note C5, a quarter note B4, a quarter note A4, a quarter note G4, a quarter note F4, a quarter note E4, a quarter note D4, and a quarter note C4. There are some double lines under the notes.

104

Musical staff for measure 104, featuring a treble clef, a key signature of two flats, and a common time signature. The staff contains a sequence of notes: a quarter note G4, a quarter note A4, a quarter note B4, a quarter note C5, a quarter note B4, a quarter note A4, a quarter note G4, a quarter note F4, a quarter note E4, a quarter note D4, and a quarter note C4. There are some double lines under the notes.

ell'

106

Musical staff for measure 106, featuring a treble clef, a key signature of two flats, and a common time signature. The staff contains a sequence of notes: a quarter note G4, a quarter note A4, a quarter note B4, a quarter note C5, a quarter note B4, a quarter note A4, a quarter note G4, a quarter note F4, a quarter note E4, a quarter note D4, and a quarter note C4.

108

Musical staff for measure 108, featuring a treble clef, a key signature of two flats, and a common time signature. The staff contains a sequence of notes: a quarter note G4, a quarter note A4, a quarter note B4, a quarter note C5, a quarter note B4, a quarter note A4, a quarter note G4, a quarter note F4, a quarter note E4, a quarter note D4, and a quarter note C4. The staff ends with a double bar line.