

Guitarra 1

BWV - 1023

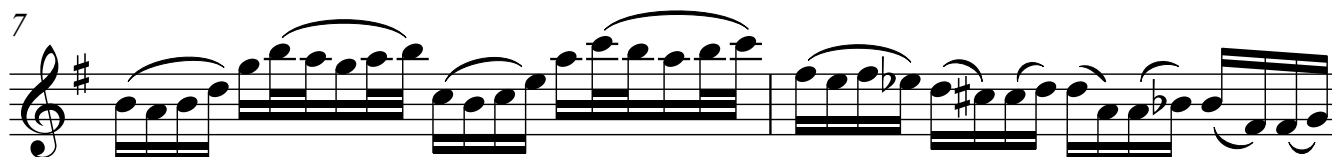
SONATA

2 - ALLEMANDE(b)

TRANSCRIPCIÓN: LUIS ALVAREZ

J. S. BACH
(1685-1750)

♩ = 60



9

trm

11

13

15

trm

15 16

17

trm

16 4/4

19


21



23



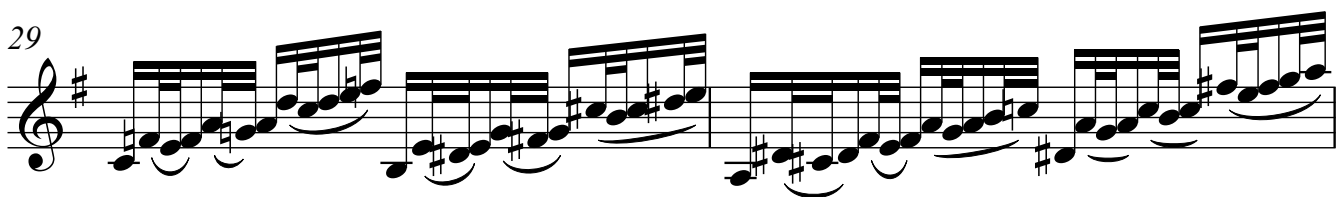
25



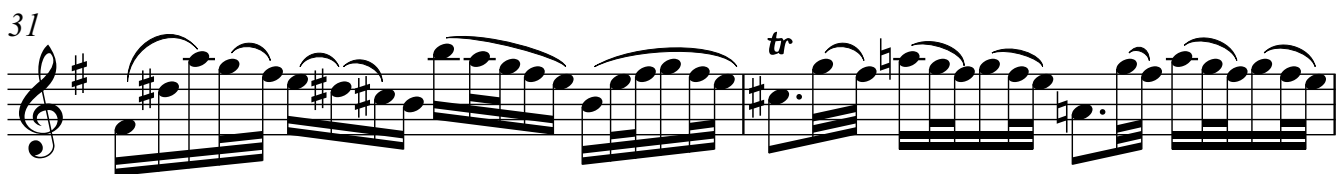
27



29



31



33

