

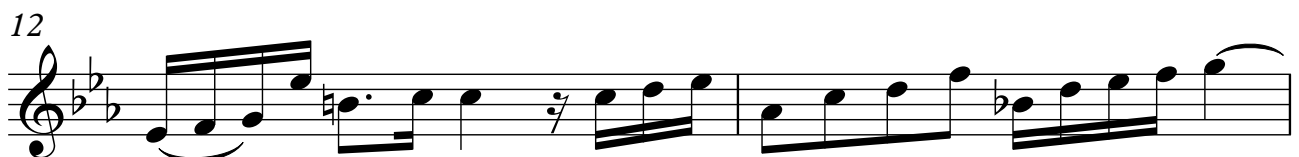
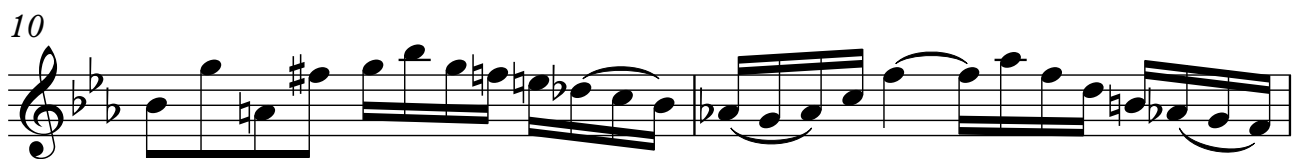
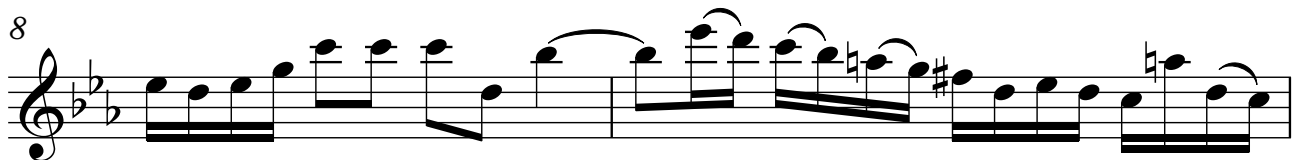
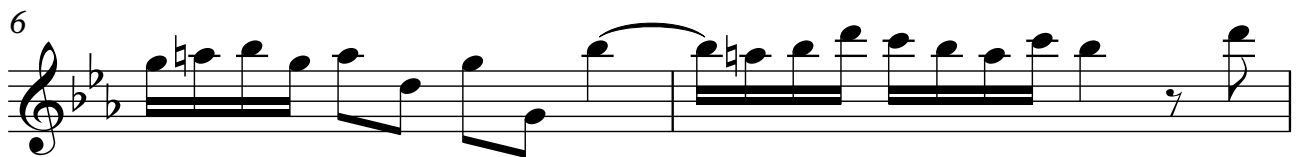
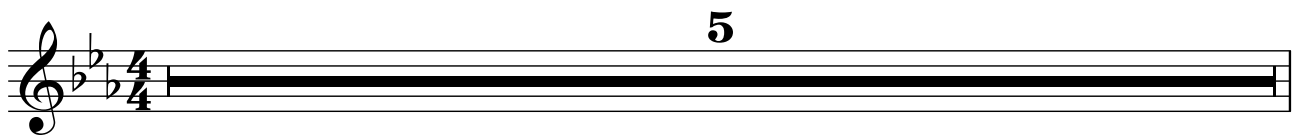
# Violín

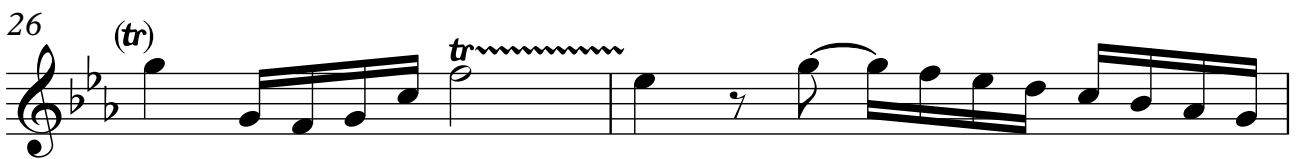
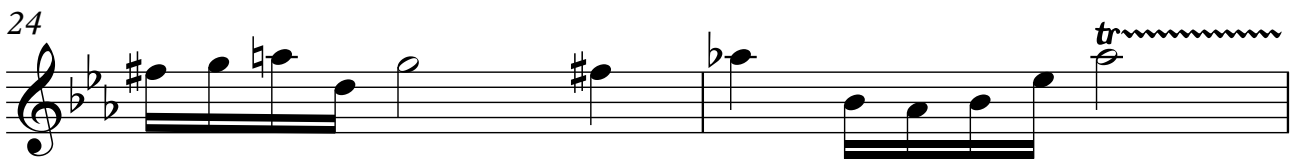
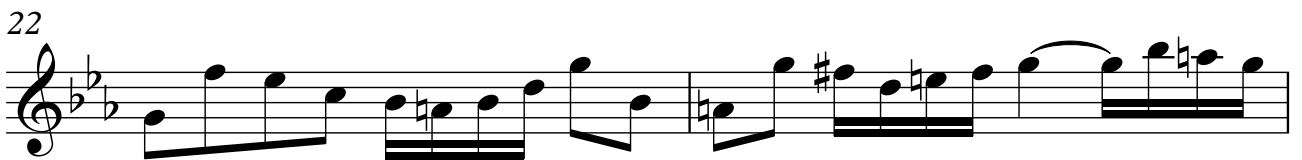
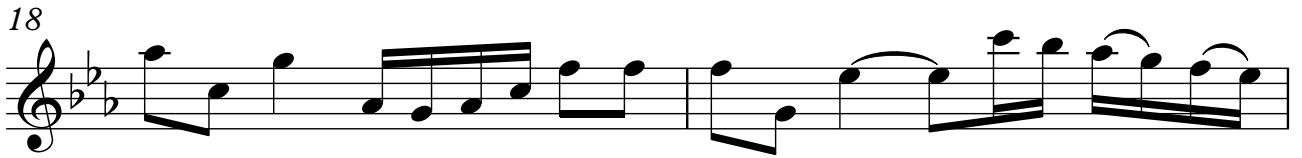
## BWV - 1017 SONATA 2 - ALEGRO

TRANSCRIPCIÓN: LUIS ALVAREZ

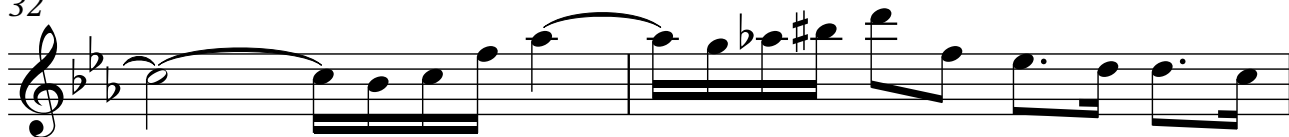
J. S. BACH  
(1685-1750)

$\text{♩} = 80$





32



34



36



38

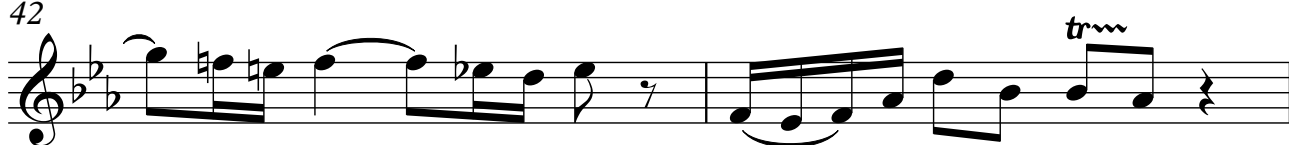


*trm*

40



42



*trm*

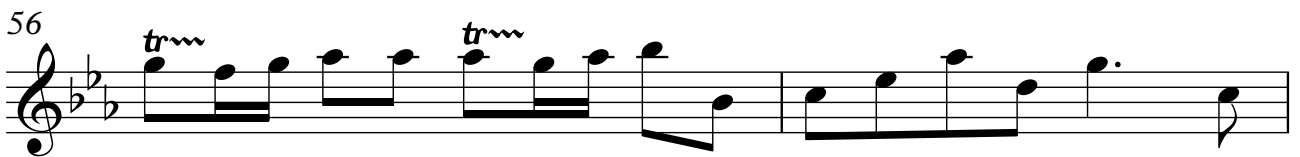
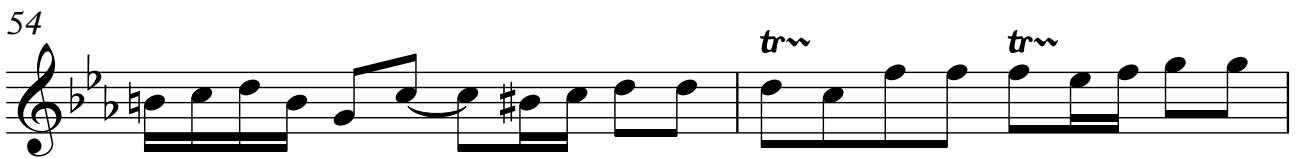
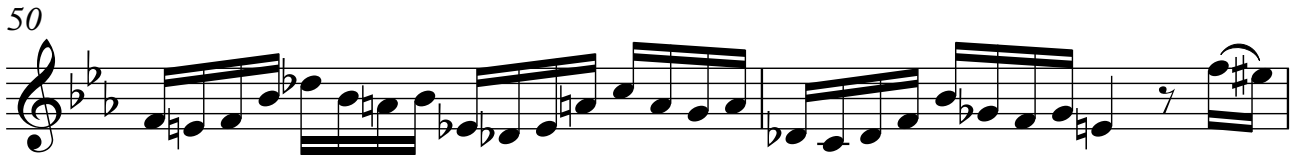
44



*trm*

46





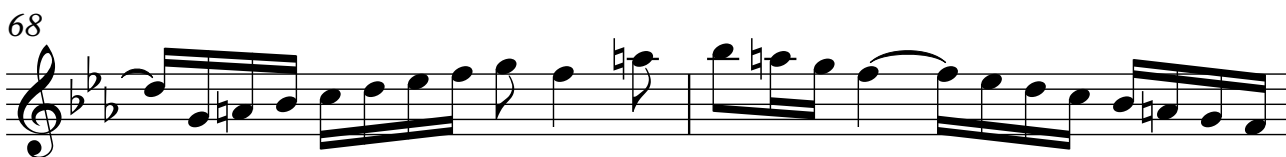
64



66



68



70



72



74



76



78



Violín

80 *tr* *tr* *tr*

82 (tr)

84

86

88

90 *tr*

92

94

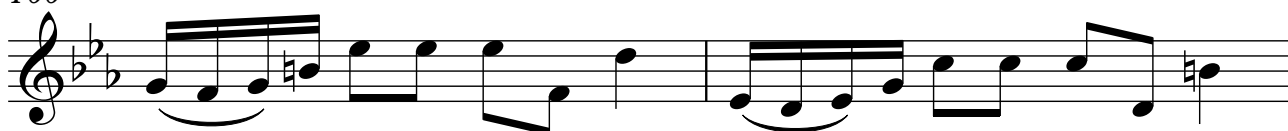
96



98



100



102



104



106



108

