

Guitarra 1

BWV - 976

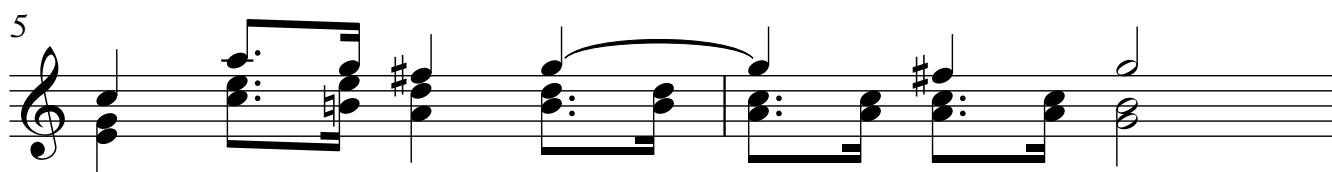
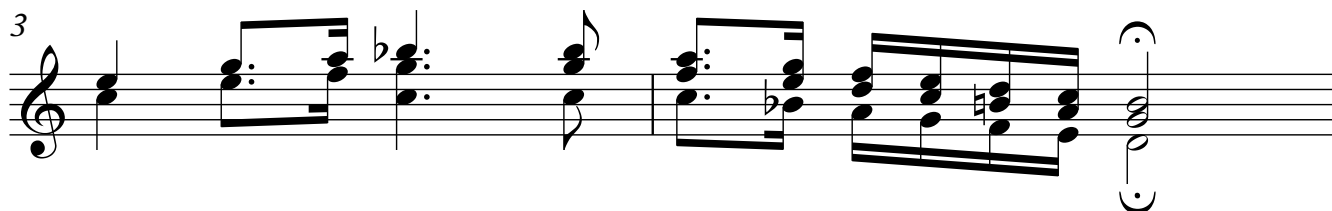
CONCIERTO DE VIVALDI - RV 265

2.- LARGO

TRANSCRIPCIÓN: LUIS ALVAREZ

J. S. BACH
(1685-1750)

♩ = 55



7

Musical notation for measures 7 and 8. Measure 7 starts with a treble clef and a key signature of one sharp (F#). The melody consists of eighth and sixteenth notes. Measure 8 features a double bar line, a repeat sign, and a fermata over the final note.

9

Musical notation for measures 9 and 10. Measure 9 continues the melodic line with eighth and sixteenth notes. Measure 10 includes a double bar line, a repeat sign, and a fermata over the final note.

11

Musical notation for measures 11 and 12. Measure 11 continues the melodic line. Measure 12 features a double bar line, a repeat sign, and a fermata over the final note.

13

Musical notation for measures 13 and 14. Measure 13 continues the melodic line. Measure 14 features a double bar line, a repeat sign, and a fermata over the final note.

15

Musical notation for measures 15 and 16. Measure 15 continues the melodic line. Measure 16 features a double bar line, a repeat sign, and a fermata over the final note.

17

Musical notation for measures 17 and 18. Measure 17 continues the melodic line. Measure 18 features a double bar line, a repeat sign, and a fermata over the final note.

19

Musical notation for measures 19 and 20. Measure 19 contains two measures of music with eighth-note patterns. Measure 20 contains two measures of music with eighth-note patterns and a fermata over the final note.

21

Musical notation for measures 21 and 22. Measure 21 contains two measures of music with eighth-note patterns and a fermata. Measure 22 contains two measures of music with eighth-note patterns and a fermata.

23

Musical notation for measures 23 and 24. Measure 23 contains two measures of music with eighth-note patterns and a fermata. Measure 24 contains two measures of music with eighth-note patterns and a fermata.

25

Musical notation for measures 25 and 26. Measure 25 contains two measures of music with eighth-note patterns and a fermata. Measure 26 contains two measures of music with eighth-note patterns and a fermata, with a *trm* (trill) marking over the final note.

27

Musical notation for measures 27 and 28. Measure 27 contains two measures of music with eighth-note patterns and a fermata. Measure 28 contains two measures of music with eighth-note patterns and a fermata.

29

Musical notation for measures 29 and 30. Measure 29 contains two measures of music with eighth-note patterns and a fermata. Measure 30 contains two measures of music with eighth-note patterns and a fermata.

4

Guitarra 1

31

Musical notation for Guitarra 1, measures 31-34. The notation is on a single staff with a treble clef. Measure 31 starts with a quarter note G4 and a quarter note F4. Measure 32 contains a dotted quarter note G4 and an eighth note F4, followed by a quarter rest. Measure 33 contains a quarter note G4 and a quarter note F4, followed by a quarter rest. Measure 34 contains a quarter note G4 and a quarter note F4, followed by a quarter rest. The piece ends with a double bar line.