

Guitarra 1

BWV - 965

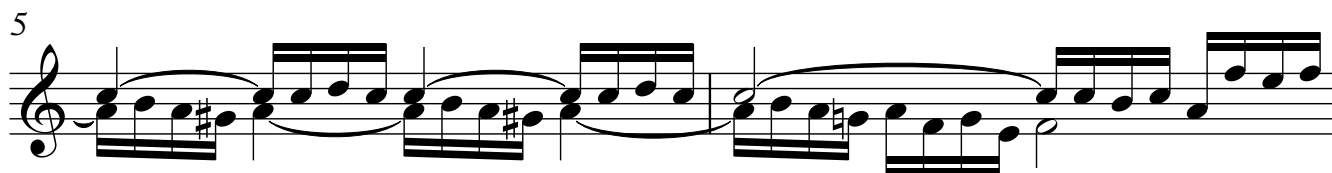
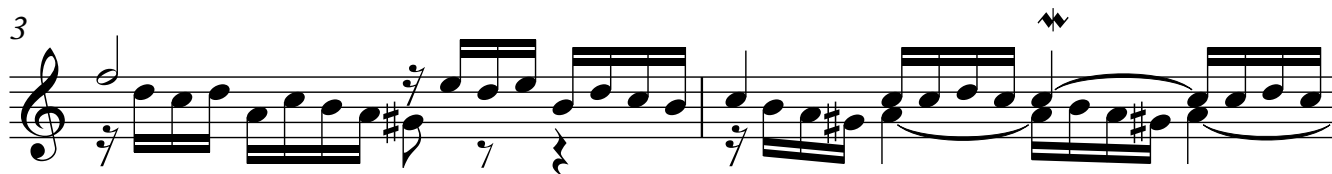
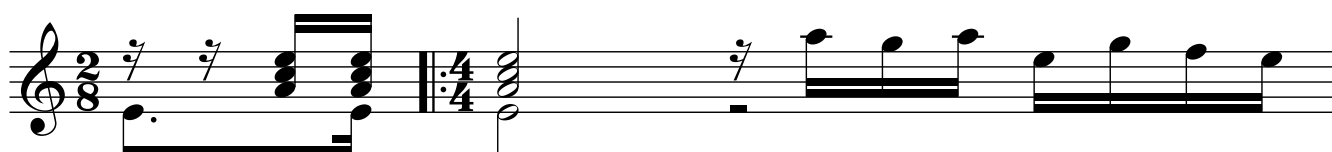
SONATA

TRANSCRIPCIÓN: LUIS ALVAREZ

J. S. BACH
(1685-1750)

4.- ALLEMANDE

$\text{♩} = 80$



11

Musical notation for measures 11 and 12. Measure 11 features a treble clef, a key signature of one sharp (F#), and a 7/8 time signature. It contains a series of eighth notes and a half note. Measure 12 continues with eighth notes and a half note, ending with a fermata.

13

Musical notation for measures 13 and 14. Measure 13 starts with a treble clef, a key signature of one sharp (F#), and a 7/8 time signature. It contains eighth notes and a half note. Measure 14 continues with eighth notes and a half note, ending with a fermata.

15

Musical notation for measures 15 and 16. Measure 15 starts with a treble clef, a key signature of one sharp (F#), and a 7/8 time signature. It contains eighth notes and a half note. Measure 16 continues with eighth notes and a half note, ending with a fermata. A first ending bracket spans measures 15 and 16, with a second ending bracket starting at measure 16.

17

Musical notation for measures 17 and 18. Measure 17 starts with a treble clef, a key signature of one sharp (F#), and a 7/8 time signature. It contains eighth notes and a half note. Measure 18 continues with eighth notes and a half note, ending with a fermata.

19

Musical notation for measures 19 and 20. Measure 19 starts with a treble clef, a key signature of one sharp (F#), and a 7/8 time signature. It contains eighth notes and a half note. Measure 20 continues with eighth notes and a half note, ending with a fermata.

21

Musical notation for measures 21 and 22. Measure 21 starts with a treble clef, a key signature of one sharp (F#), and a 7/8 time signature. It contains eighth notes and a half note. Measure 22 continues with eighth notes and a half note, ending with a fermata.

23

Musical notation for measures 23 and 24. Measure 23 begins with a treble clef, a key signature of one sharp (F#), and a common time signature. It features a melodic line with a slur over the first two notes, followed by eighth-note patterns. The bass line consists of quarter notes with a sharp sign above the first note.

25

Musical notation for measures 25 and 26. Measure 25 continues the melodic and bass patterns from the previous measures. Measure 26 features a melodic line with eighth-note patterns and a bass line with a sharp sign above the first note.

27

Musical notation for measures 27 and 28. Measure 27 continues the melodic and bass patterns. Measure 28 features a melodic line with eighth-note patterns and a bass line with a sharp sign above the first note.

29

Musical notation for measures 29 and 30. Measure 29 continues the melodic and bass patterns. Measure 30 features a melodic line with eighth-note patterns and a bass line with a sharp sign above the first note.

31

Musical notation for measures 31 and 32. Measure 31 continues the melodic and bass patterns. Measure 32 features a melodic line with eighth-note patterns and a bass line with a sharp sign above the first note. A first ending bracket labeled "1." spans the end of measure 32.

33

Musical notation for measures 33 and 34. Measure 33 continues the melodic and bass patterns. Measure 34 features a melodic line with eighth-note patterns and a bass line with a sharp sign above the first note. A second ending bracket labeled "2." spans the end of measure 34.