

Guitarra 1

FUGA

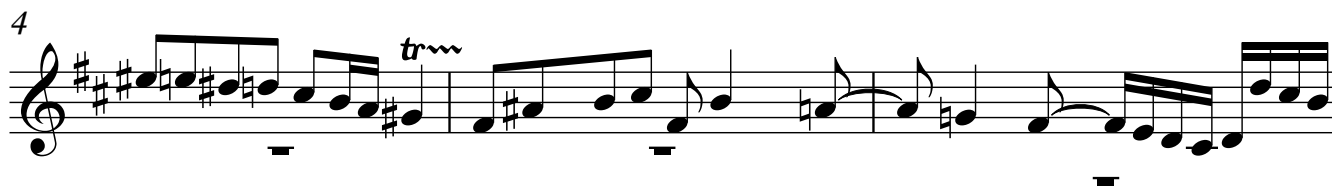
BWV - 951a

SOBRE UN TEMA DE ALBINONI

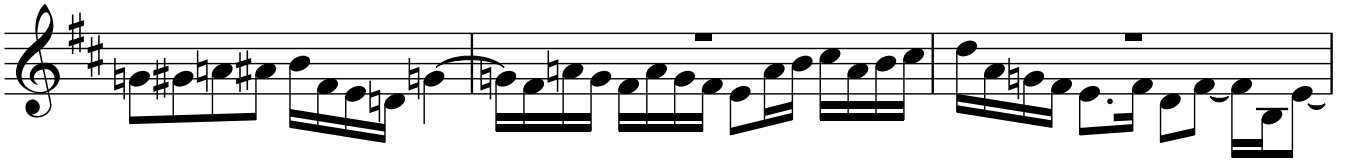
TRANSCRIPCIÓN: LUIS ALVAREZ

J. S. BACH
(1685-1750)

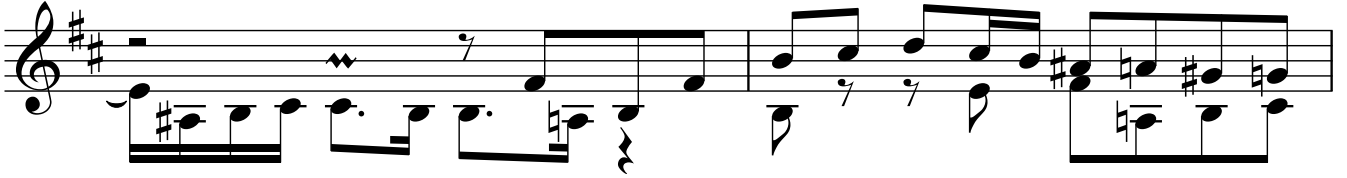
♩ = 90



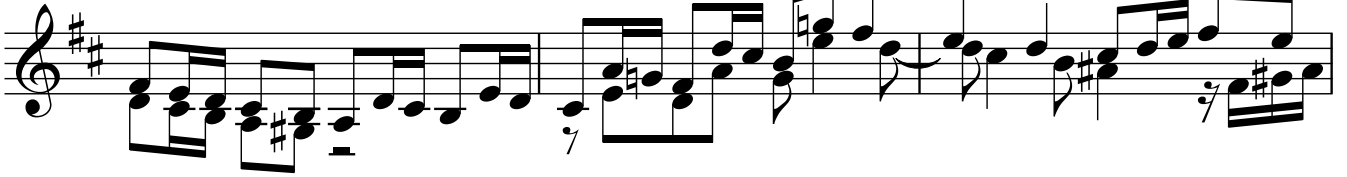
15



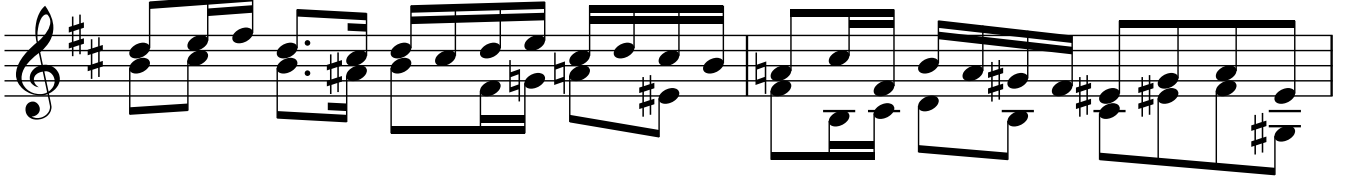
18



20



23



25



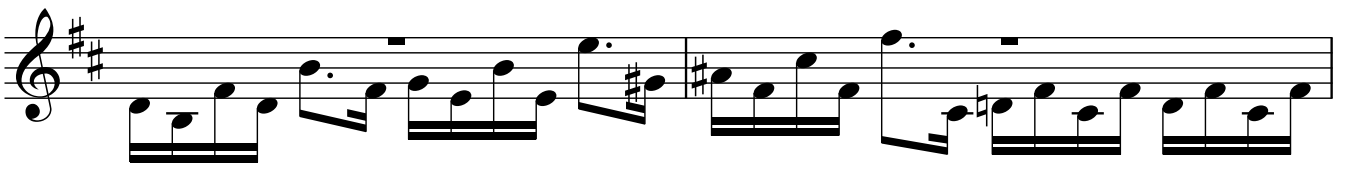
28



31



34



36

Musical notation for measure 36, featuring a treble clef, a key signature of two sharps (F# and C#), and a series of eighth notes with slurs.

37

Musical notation for measure 37, featuring a treble clef, a key signature of two sharps, and a series of eighth notes with slurs and a 7-measure rest.

39

Musical notation for measure 39, featuring a treble clef, a key signature of two sharps, and a series of eighth notes with slurs and a 7-measure rest.

42

Musical notation for measure 42, featuring a treble clef, a key signature of two sharps, and a series of eighth notes with slurs and a 7-measure rest.

45

Musical notation for measure 45, featuring a treble clef, a key signature of two sharps, and a series of eighth notes with slurs and a 7-measure rest.

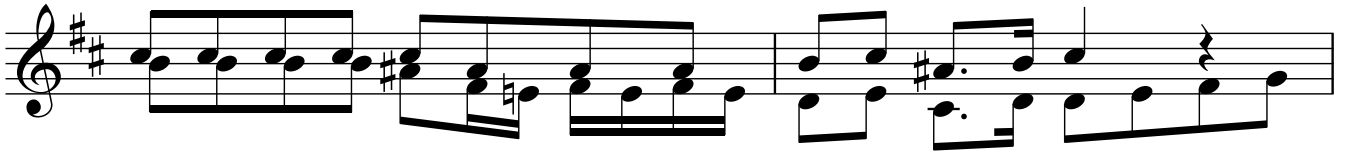
47

Musical notation for measure 47, featuring a treble clef, a key signature of two sharps, and a series of eighth notes with slurs and a 7-measure rest.

49

Musical notation for measure 49, featuring a treble clef, a key signature of two sharps, and a series of eighth notes with slurs and a 7-measure rest.

51



53



55



58



60



63



66



68

71

73

75

77

79

82

83

85

6

Guitarra 1

88

*

Musical notation for Guitarra 1, measure 88. The notation is written on a single staff in treble clef with a key signature of two sharps (F# and C#). The measure contains a complex rhythmic pattern of eighth and sixteenth notes, including some beamed notes and slurs. A star symbol (*) is placed above the first few notes. The measure concludes with a whole note chord consisting of a bass note on the first line and a higher note on the second line.