

# Guitarra 1

## BWV - 911 TOCATA

TRANSCRIPCIÓN: LUIS ALVAREZ

J. S. BACH  
(1685-1750)

$\text{♩} = 60$

2

5

6

7

8

10



31



33



36



38



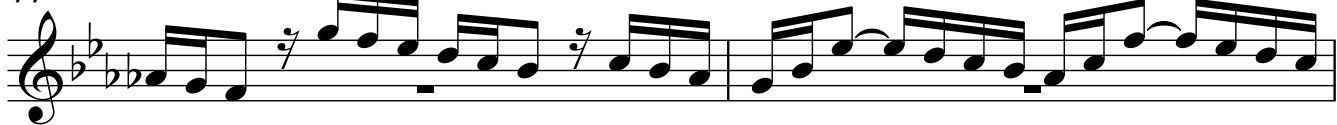
40



42



44



46



48

50

52

54

56

58

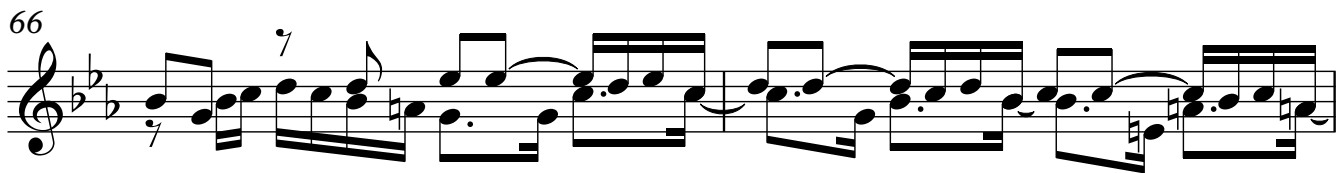
60

62

64



66



68



70



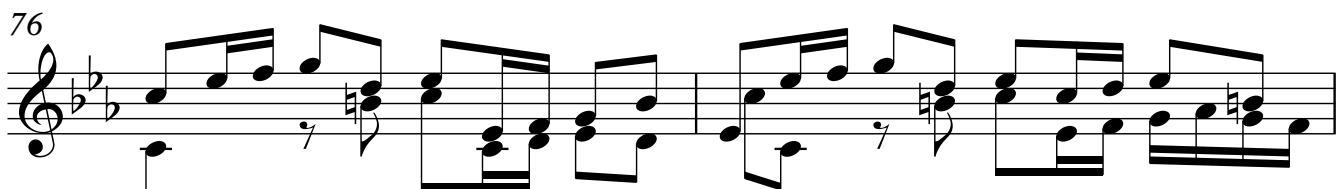
72



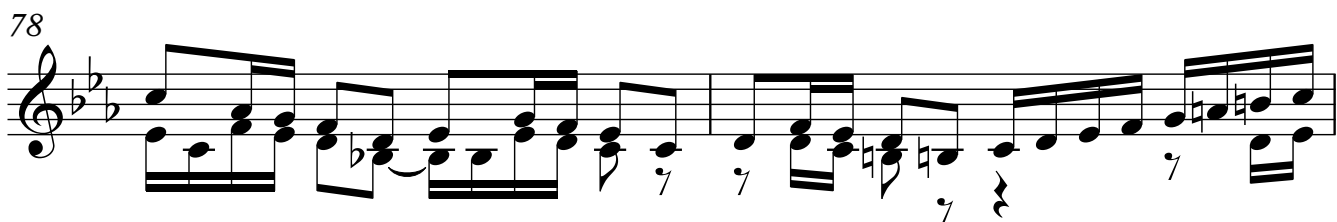
74



76



78



80

82

84

**ADAGIO**

♩ = 70

85

87

89

91

93

95



97



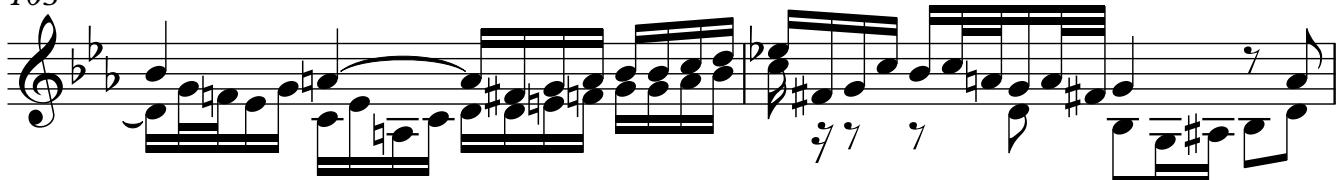
99



101



103



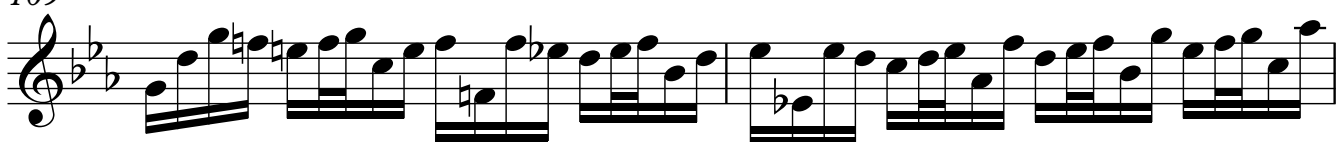
105



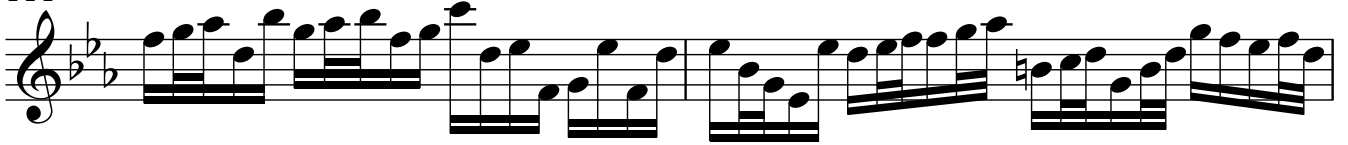
107



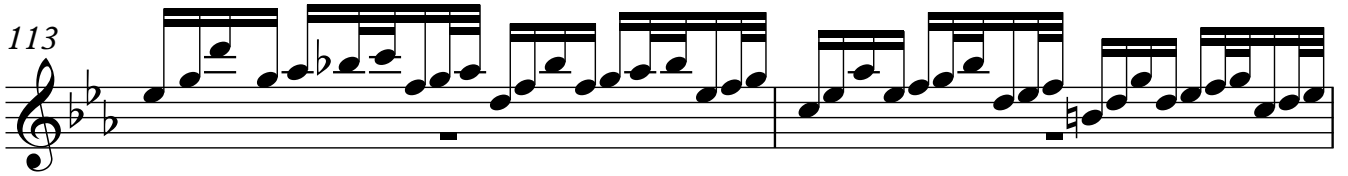
109



111



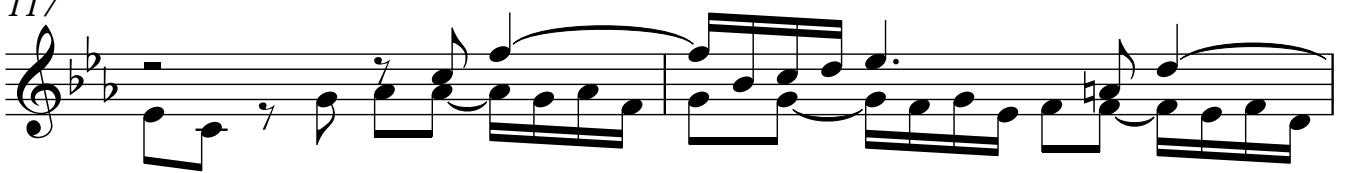
113



115



117



119



121



123

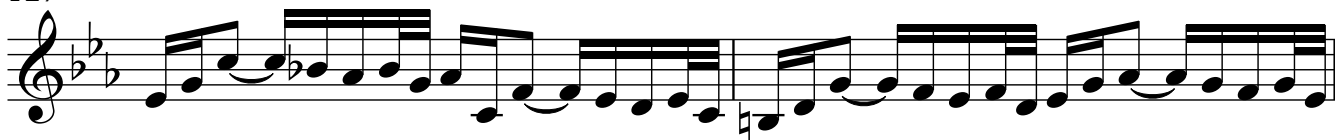


125





127



129



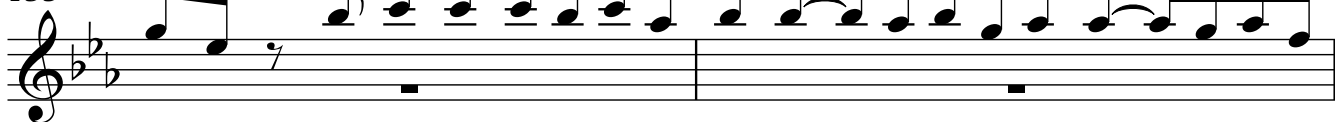
131



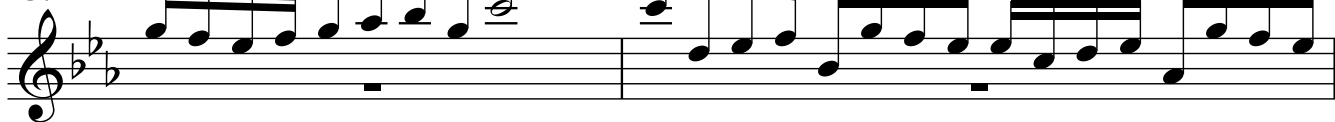
133



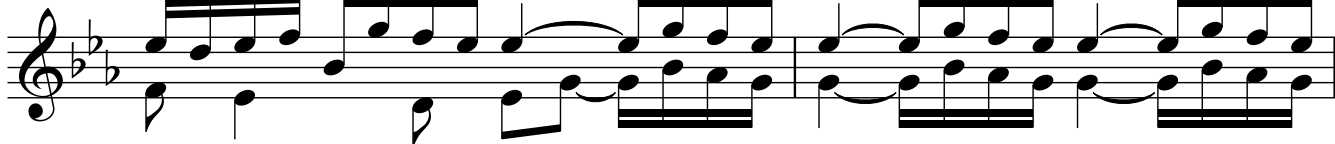
135



137



139



141



143

145

147

149

151

153

155

157



168

Musical notation for measure 168, featuring a treble clef, a key signature of two flats, and a complex melodic line with a long slur.

169

Musical notation for measure 169, featuring a treble clef, a key signature of two flats, and a complex melodic line with a long slur.

170

Musical notation for measure 170, featuring a treble clef, a key signature of two flats, and a complex melodic line.

171

Musical notation for measure 171, featuring a treble clef, a key signature of two flats, and a complex melodic line with a trill.

172

Musical notation for measure 172, featuring a treble clef, a key signature of two flats, and a complex melodic line with a trill.

173

Musical notation for measure 173, featuring a treble clef, a key signature of two flats, and a complex melodic line with a trill.

**PRESTO**

174

$\text{♩} = 100$

Musical notation for measure 174, featuring a treble clef, a key signature of two flats, and a complex melodic line with sixteenth notes and slurs.