

# Guitarra 2

# BWV - 890

## EL CLAVE BIEN TEMPERADO

### 1.- PRELUDIO

ARMONIZADO POR LUIS ALVAREZ

J. S. BACH  
(1685-1750)

Alegreto Fiorente

♩ = 90

4

7

10

12

15

18

2

Guitarra 2

21

Musical notation for guitar part 2, measures 21-22. Measure 21 starts with a whole rest, followed by eighth notes. Measure 22 has a dotted quarter note followed by eighth notes. Accents are placed over several notes.

23

Musical notation for guitar part 2, measures 23-24. Measure 23 contains a continuous eighth-note pattern. Measure 24 continues with eighth notes and a quarter note.

26

*tr*

Musical notation for guitar part 2, measures 26-27. Measure 26 begins with a tremolo effect over a dotted quarter note, followed by eighth notes. Measure 27 has eighth notes with accents.

28

Musical notation for guitar part 2, measures 28-29. Measure 28 starts with a quarter rest and eighth notes. Measure 29 continues with eighth notes and a quarter note.

31

Musical notation for guitar part 2, measures 31-32. Measure 31 features a complex eighth-note pattern. Measure 32 has eighth notes and a quarter note.

34

Musical notation for guitar part 2, measures 34-35. Measure 34 contains eighth notes. Measure 35 has eighth notes and a quarter note.

36

Musical notation for guitar part 2, measures 36-37. Measure 36 has eighth notes. Measure 37 has quarter notes.



58



61



63



66



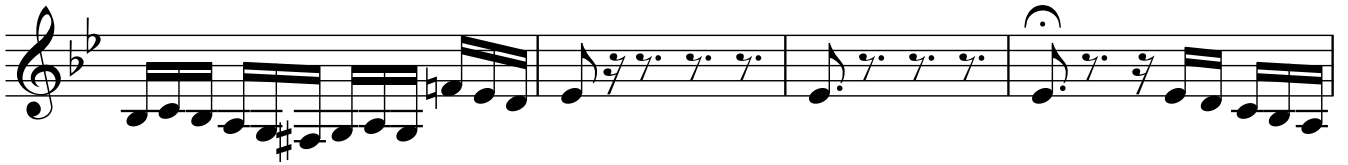
69



71



73



77



79



81



83



85

