

Guitarra 1

BWV - 712

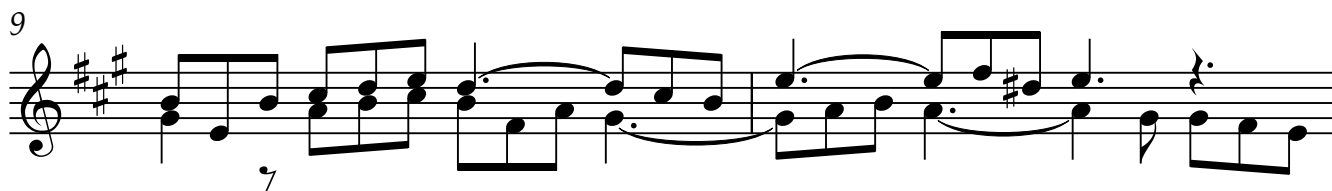
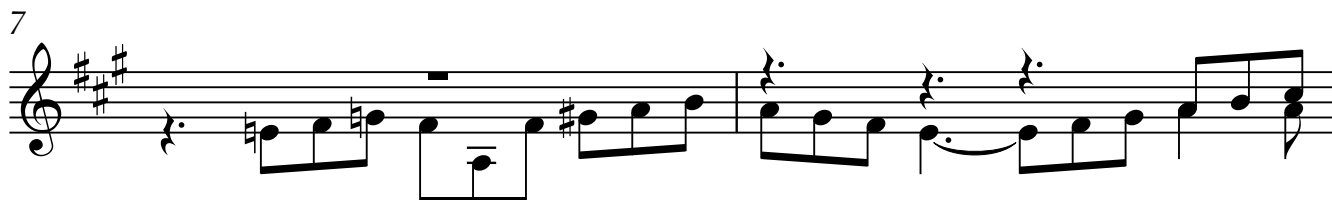
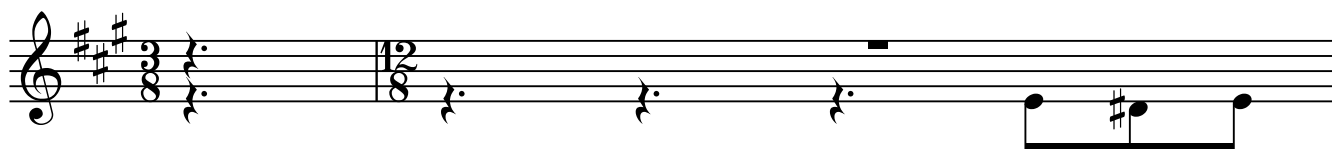
PRELUDIO

TE ESPERABA, SEÑOR

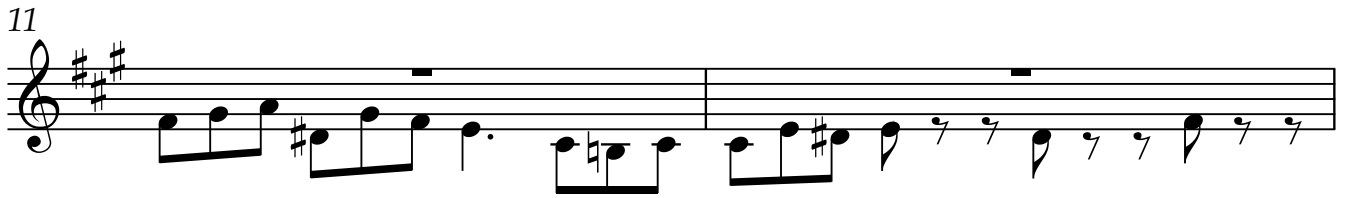
TRANSCRIPCIÓN: LUIS ALVAREZ

J. S. BACH
(1685-1750)

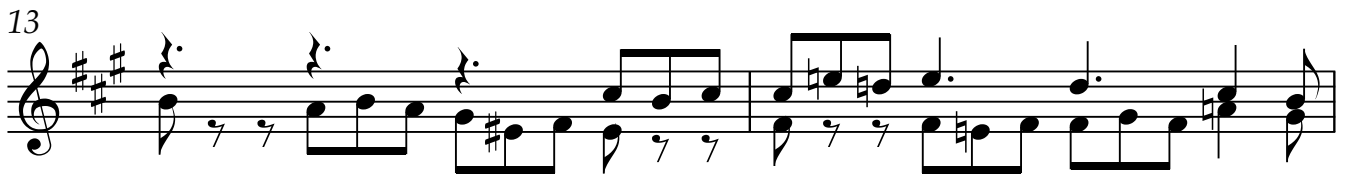
♩ = 100



11



13



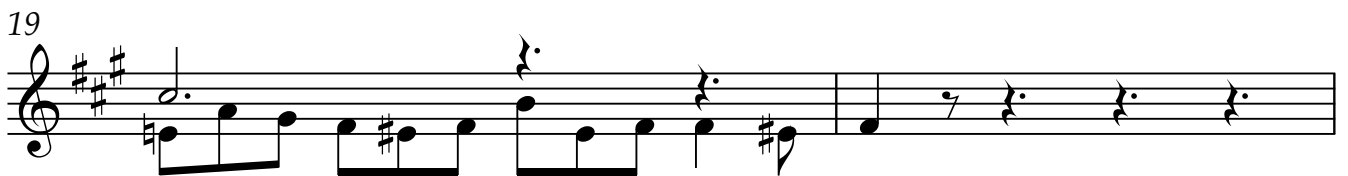
15



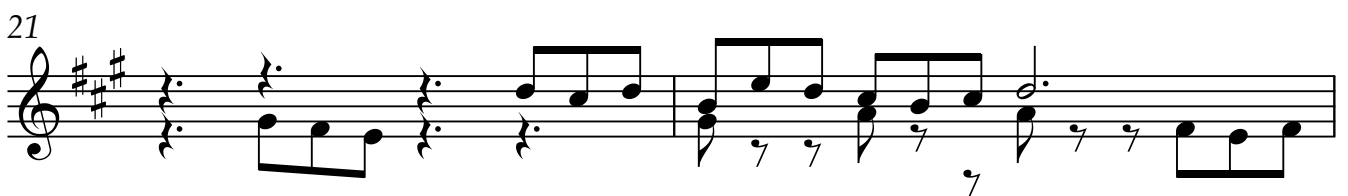
17



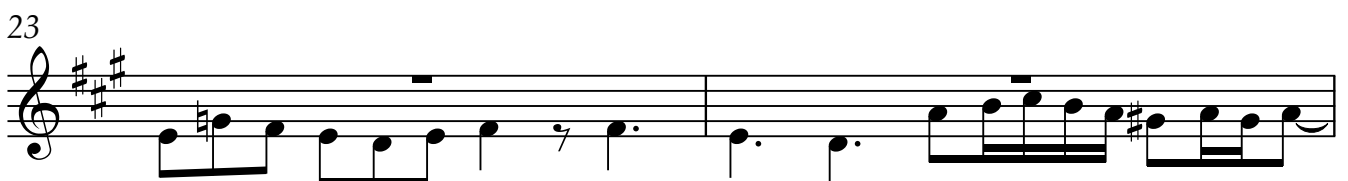
19



21



23



25

Musical notation for measures 25 and 26. The key signature is three sharps (F#, C#, G#). Measure 25 features a melodic line with eighth notes and a bass line with eighth notes. Measure 26 continues the melodic line with eighth notes and a bass line with eighth notes.

27

Musical notation for measures 27 and 28. Measure 27 features a melodic line with eighth notes and a bass line with eighth notes. Measure 28 features a melodic line with eighth notes and a bass line with eighth notes.

29

Musical notation for measures 29 and 30. Measure 29 features a melodic line with eighth notes and a bass line with eighth notes. Measure 30 features a melodic line with eighth notes and a bass line with eighth notes.

31

Musical notation for measures 31 and 32. Measure 31 features a melodic line with eighth notes and a bass line with eighth notes. Measure 32 features a melodic line with eighth notes and a bass line with eighth notes.

32

Musical notation for measures 32 and 33. Measure 32 features a melodic line with eighth notes and a bass line with eighth notes. Measure 33 features a melodic line with eighth notes and a bass line with eighth notes.

33

Musical notation for measures 33 and 34. Measure 33 features a melodic line with eighth notes and a bass line with eighth notes. Measure 34 features a melodic line with eighth notes and a bass line with eighth notes.

34

Musical notation for measures 34 and 35. Measure 34 features a melodic line with eighth notes and a bass line with eighth notes. Measure 35 features a melodic line with eighth notes and a bass line with eighth notes.