

# Guitarra 1

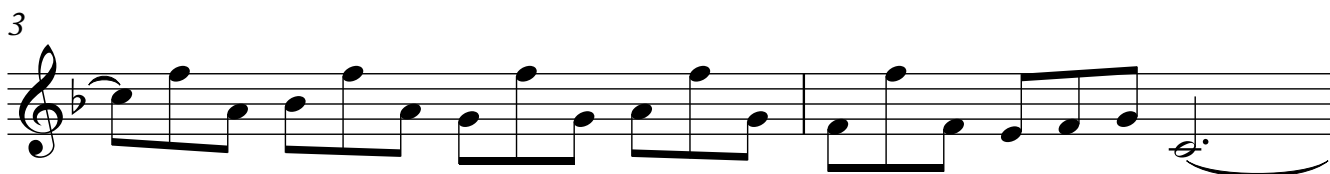
## BWV - 590

### PASTORAL

#### 1.- ALLA SICILIANA

TRANSCRIPCIÓN: LUIS ALVAREZ

J. S. BACH  
(1685-1750)



11

13

15


17

19

21

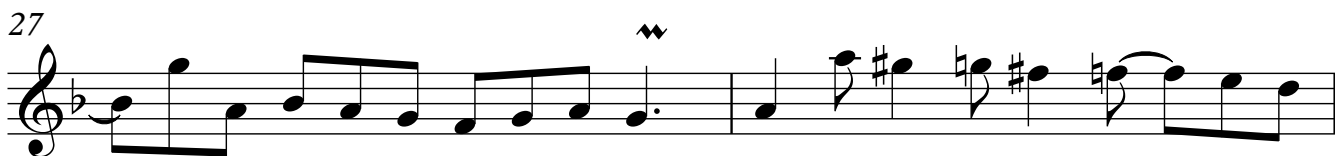
23

25



Musical notation for measures 25 and 26. The piece is in D minor (one flat). Measure 25 contains a series of eighth and quarter notes. Measure 26 continues the melodic line with a quarter rest followed by a quarter note.

27



Musical notation for measures 27 and 28. Measure 27 features a melodic line with a trill-like ornament above a dotted quarter note. Measure 28 contains a series of eighth notes.

29



Musical notation for measures 29 and 30. Measure 29 is a melodic line of eighth notes. Measure 30 features a dotted quarter note followed by an eighth rest and an eighth note.

31



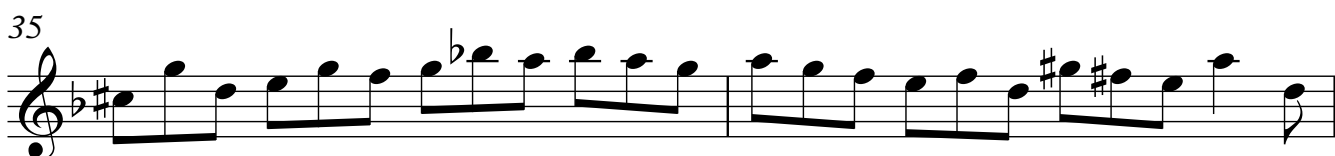
Musical notation for measures 31 and 32. Measure 31 is a melodic line of eighth notes. Measure 32 contains a dotted quarter note followed by two quarter notes.

33



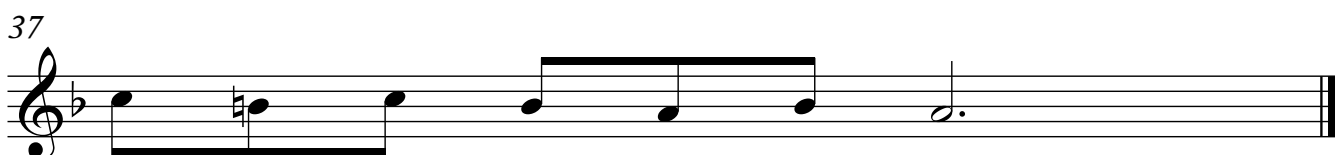
Musical notation for measures 33 and 34. Measure 33 is a melodic line of eighth notes. Measure 34 features a melodic line of eighth notes with a sharp sign above the final note.

35



Musical notation for measures 35 and 36. Measure 35 is a melodic line of eighth notes with a flat sign above the second note. Measure 36 continues with eighth notes and a sharp sign above the final note.

37



Musical notation for measures 37 and 38. Measure 37 is a melodic line of eighth notes. Measure 38 contains a dotted quarter note followed by a quarter note, ending with a double bar line.