

Guitarra 2

BWV - 535

PRELUDIO Y FUGA

2 - FUGA

TRANSCRIPCIÓN: LUIS ALVAREZ

J. S. BACH
(1685-1750)

♩=95

4

7

10

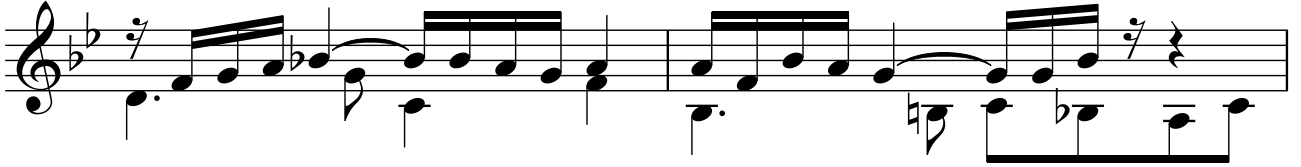
13

16

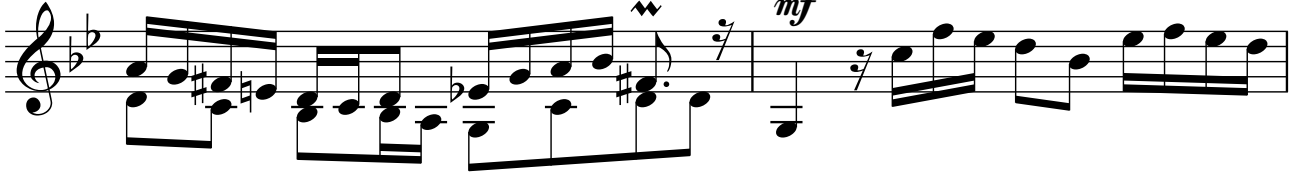
19



22



24



26



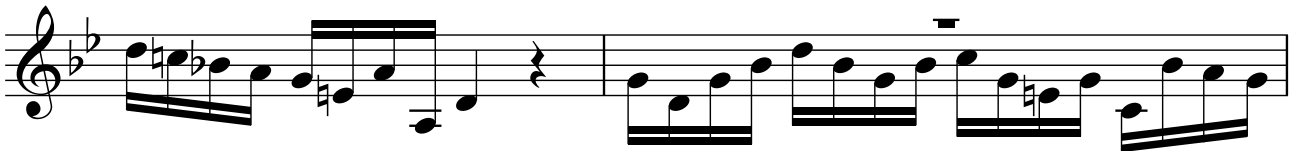
28



30



32



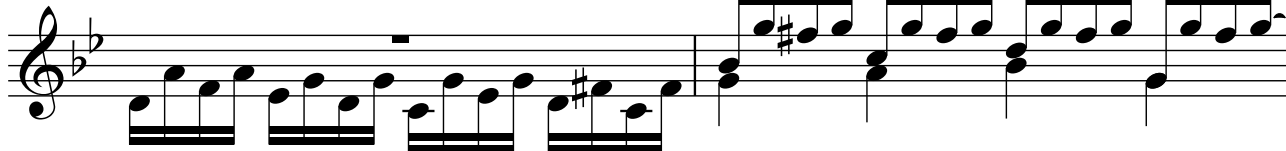
34



36



38



40



42



44



46



Guitarra 2

48

Musical notation for measures 48 and 49. Measure 48 starts with a treble clef, a key signature of two flats (B-flat and E-flat), and a common time signature. It features a melodic line with eighth notes and a bass line with eighth notes. Measure 49 continues the melodic line with eighth notes and includes a guitar-specific notation (a vertical line with a slash) below the staff.

50

Musical notation for measures 50 and 51. Measure 50 continues the melodic line with eighth notes and includes a guitar-specific notation (a vertical line with a slash) below the staff. Measure 51 features a melodic line with eighth notes and a bass line with eighth notes.

52

Musical notation for measures 52 and 53. Measure 52 features a melodic line with eighth notes and a bass line with eighth notes. Measure 53 continues the melodic line with eighth notes and includes a guitar-specific notation (a vertical line with a slash) below the staff.

54

Musical notation for measures 54 and 55. Measure 54 features a melodic line with eighth notes and a bass line with eighth notes. Measure 55 continues the melodic line with eighth notes and includes a guitar-specific notation (a vertical line with a slash) below the staff.

56

Musical notation for measures 56 and 57. Measure 56 features a melodic line with eighth notes and a bass line with eighth notes. Measure 57 continues the melodic line with eighth notes and includes a guitar-specific notation (a vertical line with a slash) below the staff.

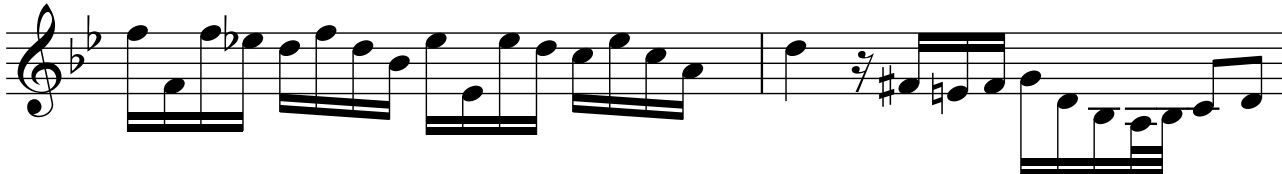
58

Musical notation for measures 58 and 59. Measure 58 features a melodic line with eighth notes and a bass line with eighth notes. Measure 59 continues the melodic line with eighth notes and includes a guitar-specific notation (a vertical line with a slash) below the staff.

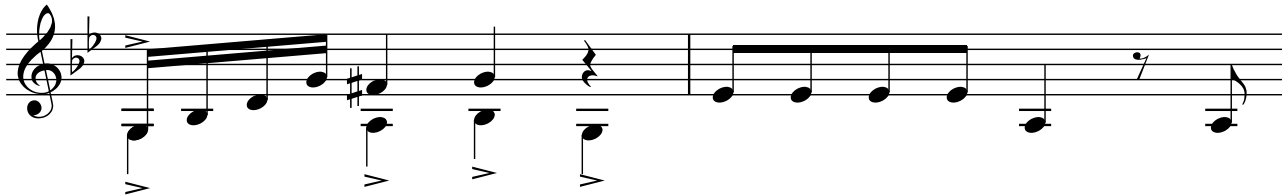
60

Musical notation for measures 60 and 61. Measure 60 features a melodic line with eighth notes and a bass line with eighth notes. Measure 61 continues the melodic line with eighth notes and includes a guitar-specific notation (a vertical line with a slash) below the staff.

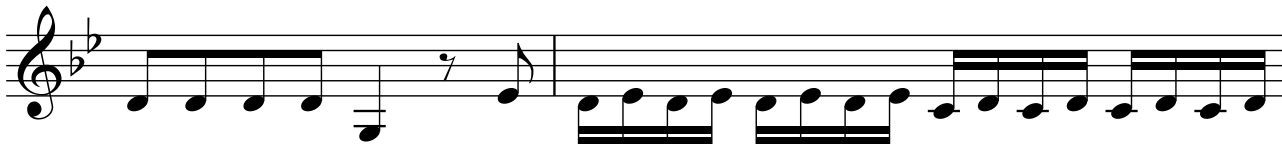
62



64



66



68



70



72



76

