

# Guitarra 1

## BWV - 534

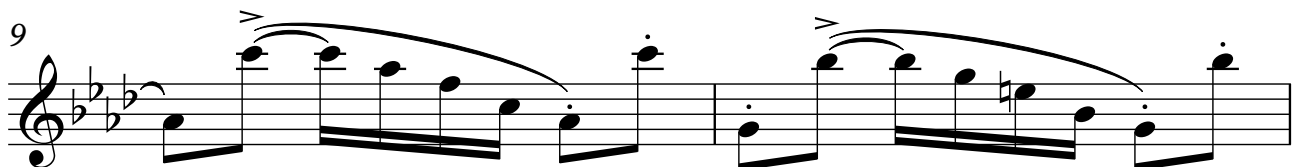
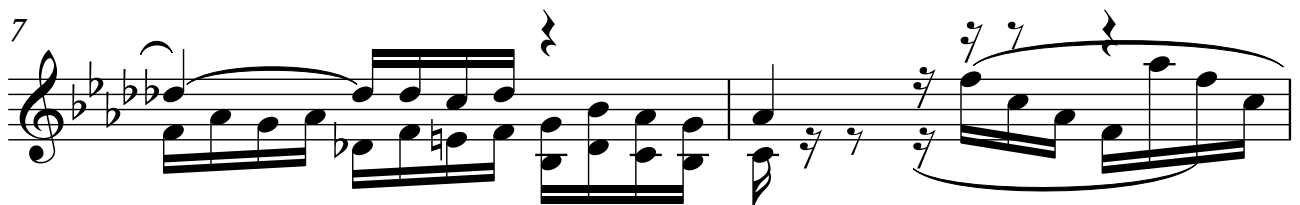
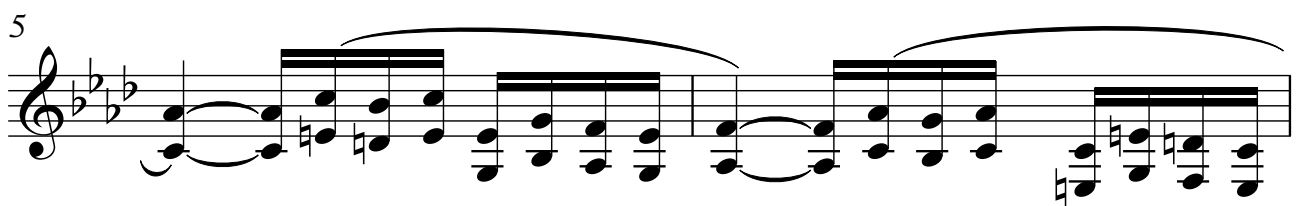
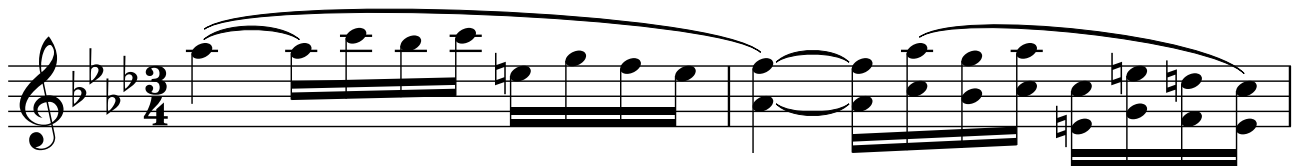
### PRELUDIO Y FUGA

#### 1 - PRELUDIO

TRANSCRIPCIÓN: LUIS ALVAREZ

J. S. BACH  
(1685-1750)

♩=80



2

Guitarra 1

11

13

15

17

19

21

23

25

Guitarra 1

*f*

3

27

29

31

33

35

37

39

Musical notation for measures 39 and 40. Measure 39 features a melodic line with eighth notes and a bass line with chords. Measure 40 continues the melodic line with a slur and includes a fermata over the final note.

41

Musical notation for measure 41, showing a melodic line with eighth notes and a bass line with chords.

43

Musical notation for measures 43 and 44. Measure 43 has a melodic line with eighth notes and a bass line with a '7' chord marking. Measure 44 features a melodic line with a slur and a fermata over the final note.

45

Musical notation for measures 45 and 46. Measure 45 has a melodic line with eighth notes and a bass line with chords. Measure 46 features a melodic line with a slur and a fermata over the final note.

47

Musical notation for measures 47 and 48. Measure 47 has a melodic line with eighth notes and a bass line with a '7' chord marking. Measure 48 features a melodic line with a slur and a fermata over the final note.

49

Musical notation for measures 49 and 50. Measure 49 has a melodic line with eighth notes and a bass line with a '7' chord marking. Measure 50 features a melodic line with a slur and a fermata over the final note.

51

Musical notation for measures 51 and 52. Measure 51 has a melodic line with eighth notes and a bass line with a '7' chord marking. Measure 52 features a melodic line with a slur and a fermata over the final note.

53

Musical notation for measures 53 and 54. Measure 53 features a treble clef, a key signature of three flats (B-flat, E-flat, A-flat), and a 7/8 time signature. The melody consists of eighth and sixteenth notes, with a slur over the first two measures. The bass line is a steady eighth-note accompaniment. Measure 54 continues the melody and accompaniment.

55

Musical notation for measures 55 and 56. Measure 55 continues the melody and accompaniment from the previous system. Measure 56 features a treble clef, a key signature of three flats, and a 7/8 time signature. The melody includes a slur over the first two measures, and the bass line continues with eighth notes.

57

Musical notation for measures 57 and 58. Measure 57 continues the melody and accompaniment. Measure 58 features a treble clef, a key signature of three flats, and a 7/8 time signature. The melody includes a slur over the first two measures, and the bass line continues with eighth notes.

59

Musical notation for measures 59 and 60. Measure 59 continues the melody and accompaniment. Measure 60 features a treble clef, a key signature of three flats, and a 7/8 time signature. The melody includes a slur over the first two measures, and the bass line continues with eighth notes.

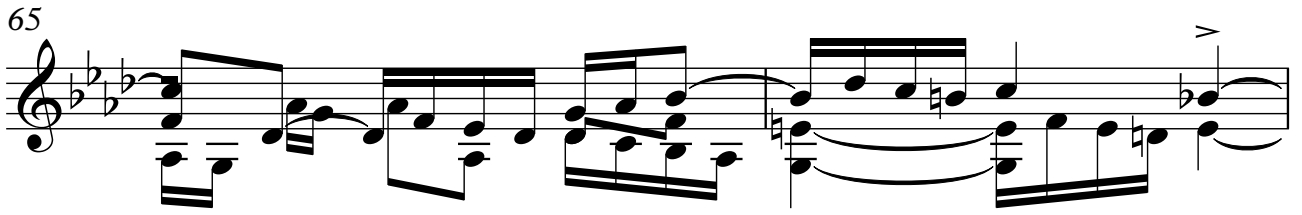
61

Musical notation for measures 61 and 62. Measure 61 continues the melody and accompaniment. Measure 62 features a treble clef, a key signature of three flats, and a 7/8 time signature. The melody includes a slur over the first two measures, and the bass line continues with eighth notes.

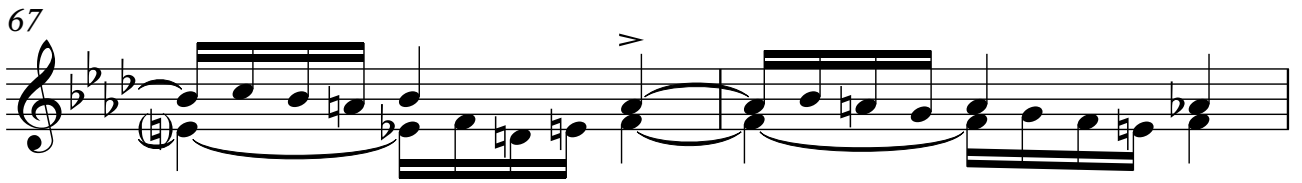
63

Musical notation for measures 63 and 64. Measure 63 continues the melody and accompaniment. Measure 64 features a treble clef, a key signature of three flats, and a 7/8 time signature. The melody includes a slur over the first two measures, and the bass line continues with eighth notes.

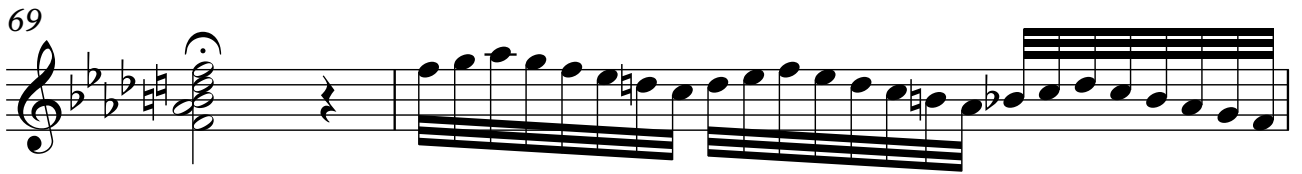
65



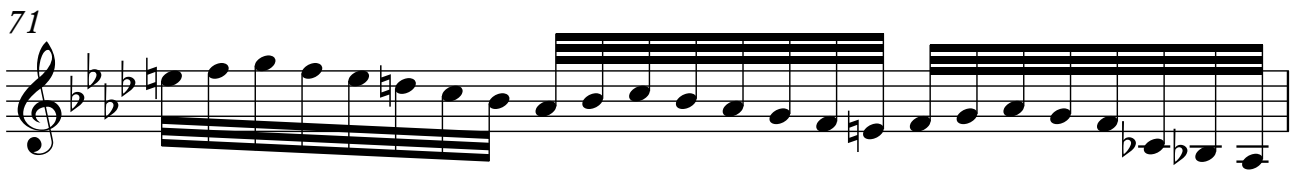
67



69



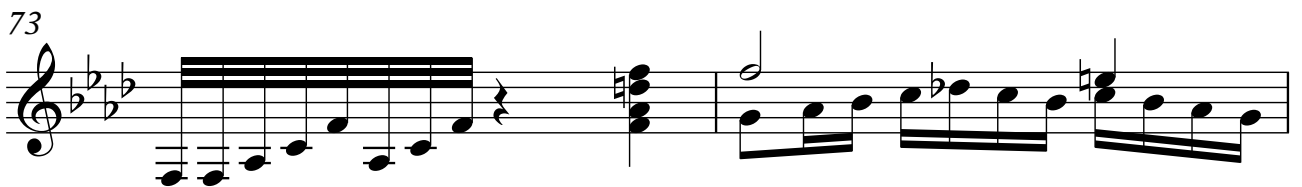
71



72



73



75

