

Guitarra 2

BWV - 529

SONATA

1.- ALEGRO

TRANSCRIPCIÓN: LUIS ALVAREZ

J. S. BACH
(1685-1750)

ALEGRO

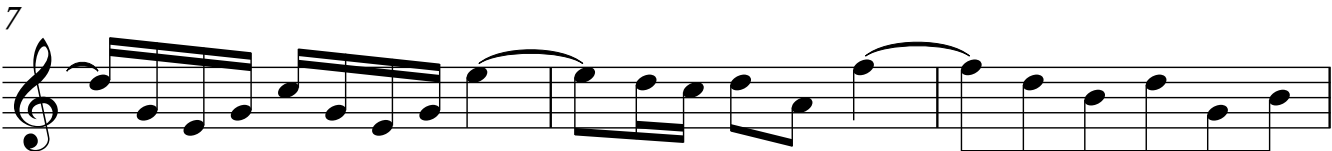
♩ = 90



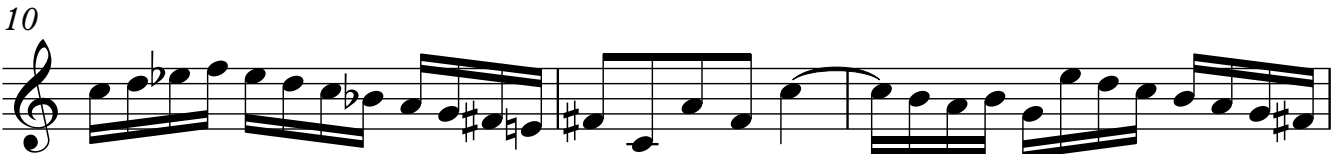
First staff of music. Treble clef, 3/4 time signature. The first measure contains a whole rest. The second measure begins with a 7-measure rest symbol, followed by eighth notes: G4, A4, B4, C5, B4, A4, G4. The third measure continues with eighth notes: G4, A4, B4, C5, B4, A4, G4. The fourth measure continues with eighth notes: G4, A4, B4, C5, B4, A4, G4. The fifth measure continues with eighth notes: G4, A4, B4, C5, B4, A4, G4. The sixth measure continues with eighth notes: G4, A4, B4, C5, B4, A4, G4. The seventh measure continues with eighth notes: G4, A4, B4, C5, B4, A4, G4.



Second staff of music. Treble clef. Starts with a quarter note G4, followed by eighth notes: A4, B4, C5, B4, A4, G4. The next measure continues with eighth notes: G4, A4, B4, C5, B4, A4, G4. The third measure continues with eighth notes: G4, A4, B4, C5, B4, A4, G4. The fourth measure continues with eighth notes: G4, A4, B4, C5, B4, A4, G4. The fifth measure continues with eighth notes: G4, A4, B4, C5, B4, A4, G4. The sixth measure continues with eighth notes: G4, A4, B4, C5, B4, A4, G4. The seventh measure continues with eighth notes: G4, A4, B4, C5, B4, A4, G4.



Third staff of music. Treble clef. Starts with a quarter note G4, followed by eighth notes: A4, B4, C5, B4, A4, G4. The next measure continues with eighth notes: G4, A4, B4, C5, B4, A4, G4. The third measure continues with eighth notes: G4, A4, B4, C5, B4, A4, G4. The fourth measure continues with eighth notes: G4, A4, B4, C5, B4, A4, G4. The fifth measure continues with eighth notes: G4, A4, B4, C5, B4, A4, G4. The sixth measure continues with eighth notes: G4, A4, B4, C5, B4, A4, G4. The seventh measure continues with eighth notes: G4, A4, B4, C5, B4, A4, G4.



Fourth staff of music. Treble clef. Starts with a quarter note G4, followed by eighth notes: A4, B4, C5, B4, A4, G4. The next measure continues with eighth notes: G4, A4, B4, C5, B4, A4, G4. The third measure continues with eighth notes: G4, A4, B4, C5, B4, A4, G4. The fourth measure continues with eighth notes: G4, A4, B4, C5, B4, A4, G4. The fifth measure continues with eighth notes: G4, A4, B4, C5, B4, A4, G4. The sixth measure continues with eighth notes: G4, A4, B4, C5, B4, A4, G4. The seventh measure continues with eighth notes: G4, A4, B4, C5, B4, A4, G4.



Fifth staff of music. Treble clef. Starts with a quarter note G4, followed by eighth notes: A4, B4, C5, B4, A4, G4. The next measure continues with eighth notes: G4, A4, B4, C5, B4, A4, G4. The third measure continues with eighth notes: G4, A4, B4, C5, B4, A4, G4. The fourth measure continues with eighth notes: G4, A4, B4, C5, B4, A4, G4. The fifth measure continues with eighth notes: G4, A4, B4, C5, B4, A4, G4. The sixth measure continues with eighth notes: G4, A4, B4, C5, B4, A4, G4. The seventh measure continues with eighth notes: G4, A4, B4, C5, B4, A4, G4.

Guitarra 2

16

19

22

25

28

31

34

37

Guitarra 2

5

88



91



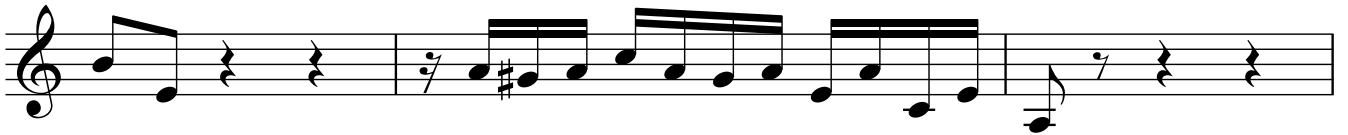
94



97



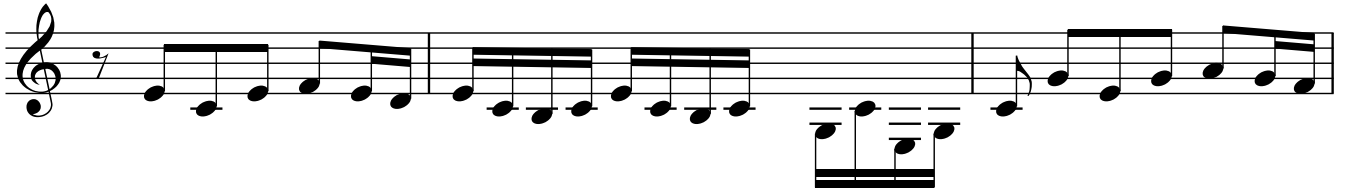
100



103



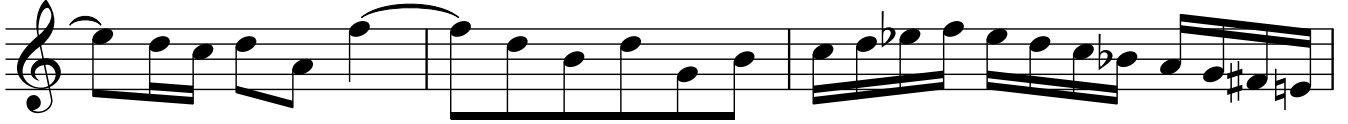
106



109



112



115



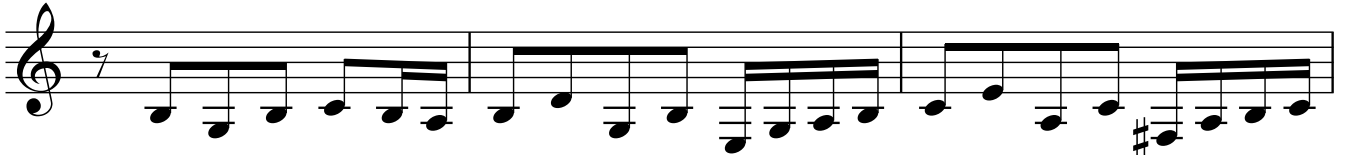
118



121



124



127



130



133



136



139



142



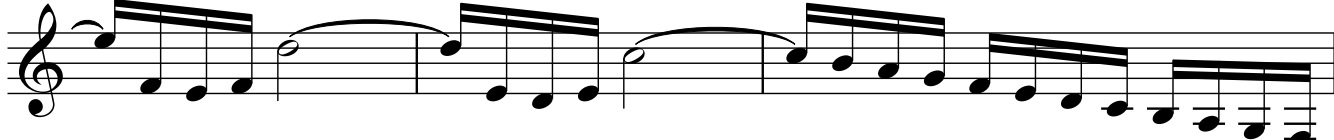
145



148



151



154

