

Guitarra 1

Anh. 153

SONATA

2 - vivace

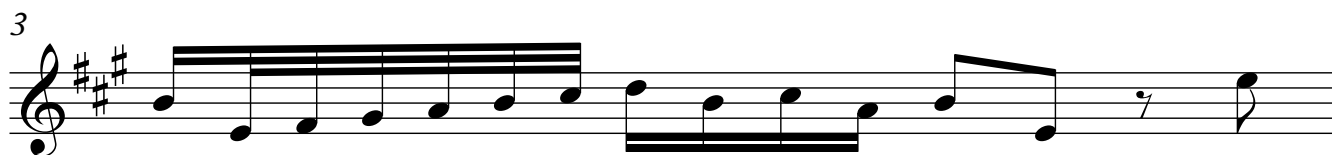
(ANONIMO)

TRANSCRIPCIÓN: LUIS ALVAREZ

J. S. BACH

(1685-1750)

Vivace



Guitarra 1

15

16

17

18

19

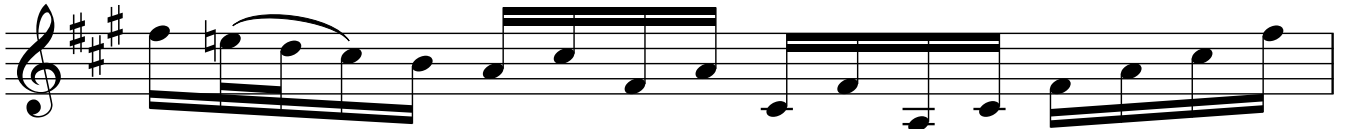
20

21

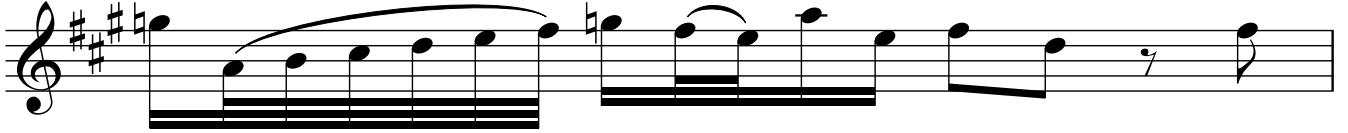
22

Guitarra 1

23



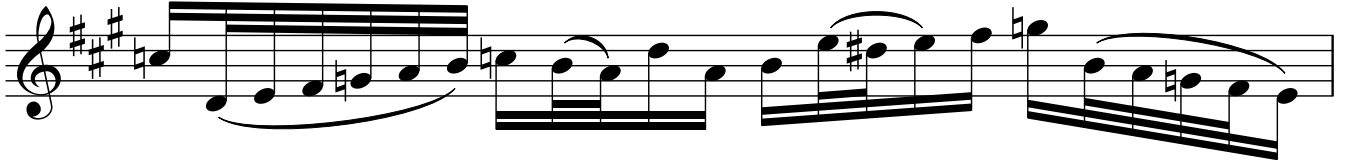
24



25



26



27



28



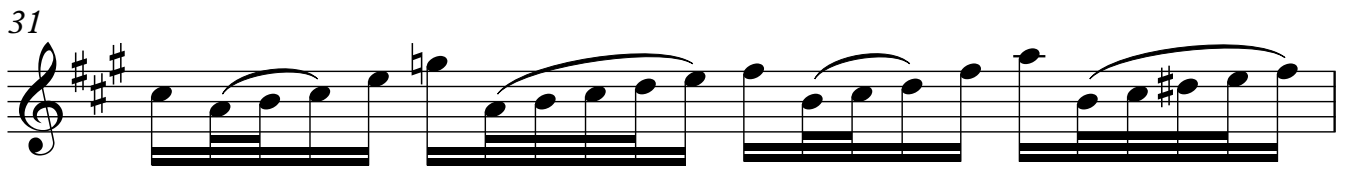
29



30

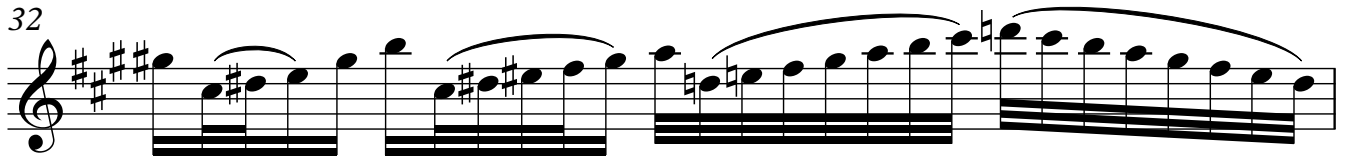


31




Musical notation for measure 31, featuring a treble clef, a key signature of three sharps (F#, C#, G#), and a 4/4 time signature. The notation consists of a single staff with a series of eighth notes beamed together in groups of four, each group spanning across a bar line. The notes are: F#4, G4, A4, B4 in the first bar; C5, D5, E5, F#5 in the second bar; G5, A5, B5, C6 in the third bar; and D6, E6, F#6, G6 in the fourth bar.

32



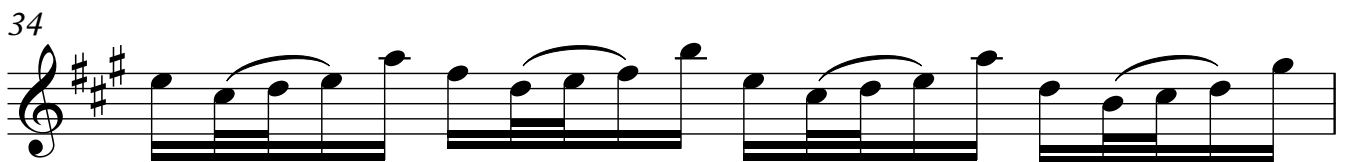
Musical notation for measure 32, featuring a treble clef, a key signature of three sharps (F#, C#, G#), and a 4/4 time signature. The notation consists of a single staff with a series of eighth notes beamed together in groups of four, each group spanning across a bar line. The notes are: F#4, G4, A4, B4 in the first bar; C5, D5, E5, F#5 in the second bar; G5, A5, B5, C6 in the third bar; and D6, E6, F#6, G6 in the fourth bar.

33



Musical notation for measure 33, featuring a treble clef, a key signature of three sharps (F#, C#, G#), and a 4/4 time signature. The notation consists of a single staff with a series of eighth notes beamed together in groups of four, each group spanning across a bar line. The notes are: F#4, G4, A4, B4 in the first bar; C5, D5, E5, F#5 in the second bar; G5, A5, B5, C6 in the third bar; and D6, E6, F#6, G6 in the fourth bar.

34



Musical notation for measure 34, featuring a treble clef, a key signature of three sharps (F#, C#, G#), and a 4/4 time signature. The notation consists of a single staff with a series of eighth notes beamed together in groups of four, each group spanning across a bar line. The notes are: F#4, G4, A4, B4 in the first bar; C5, D5, E5, F#5 in the second bar; G5, A5, B5, C6 in the third bar; and D6, E6, F#6, G6 in the fourth bar.

35



Musical notation for measure 35, featuring a treble clef, a key signature of three sharps (F#, C#, G#), and a 4/4 time signature. The notation consists of a single staff with a series of eighth notes beamed together in groups of four, each group spanning across a bar line. The notes are: F#4, G4, A4, B4 in the first bar; C5, D5, E5, F#5 in the second bar; G5, A5, B5, C6 in the third bar; and D6, E6, F#6, G6 in the fourth bar. A trill (tr) is indicated over the final note of the fourth bar.

36



Musical notation for measure 36, featuring a treble clef, a key signature of three sharps (F#, C#, G#), and a 4/4 time signature. The notation consists of a single staff with a series of eighth notes beamed together in groups of four, each group spanning across a bar line. The notes are: F#4, G4, A4, B4 in the first bar; C5, D5, E5, F#5 in the second bar; G5, A5, B5, C6 in the third bar; and D6, E6, F#6, G6 in the fourth bar.

37



Musical notation for measure 37, featuring a treble clef, a key signature of three sharps (F#, C#, G#), and a 4/4 time signature. The notation consists of a single staff with a series of eighth notes beamed together in groups of four, each group spanning across a bar line. The notes are: F#4, G4, A4, B4 in the first bar; C5, D5, E5, F#5 in the second bar; G5, A5, B5, C6 in the third bar; and D6, E6, F#6, G6 in the fourth bar.

38



Musical notation for measure 38, featuring a treble clef, a key signature of three sharps (F#, C#, G#), and a 4/4 time signature. The notation consists of a single staff with a series of eighth notes beamed together in groups of four, each group spanning across a bar line. The notes are: F#4, G4, A4, B4 in the first bar; C5, D5, E5, F#5 in the second bar; G5, A5, B5, C6 in the third bar; and D6, E6, F#6, G6 in the fourth bar. A trill (tr) is indicated over the final note of the fourth bar.