

BIBLIOTHÈQUE NATIONALE
PARIS

**DÉPARTEMENT
DE LA MUSIQUE**

Rés. Vm⁷ 376

(2^e livre)

R. 3933

- 52 569 bis -

° 12.5

Res. Unit 376

Premier livre de Vielle contenant six chansons avec l'indication de l'accord, et appliquer les notes selon la manière qu'on a accoutumé de jouer, le tout de la composition de Claude Gervaise, imprimé par la veuve de Pierre Attaignant demourant à Paris en la rue de la Harpe pres l'Eglise S. Cosme le 14 fevrier 1534 avec privilège de six pour neuf ans



in 4° oblong de 32 feuillets. (titre pris dans le catalogue de Krosch)

ce premier livre usaque (en juin 1868) ainsi que la fin du livre septième vers le feuillet 20 inclusif

V. 2713.

248

Secōd liure contenant trois Galliards

TROIS PAVANES, VINGT TROIS BRANLES

Tant en Simple, Que double, Deux chasses, et en Neuf autres

En forme de Compaignie. Le tout ordonné par le Roy et le Royne

nonuellement imprimé en Musique à quatre parties, en un

liure seul, par Pierre Attaignant, Imprimeur

de Musique de la Cour de France, à Paris

en la Rue de la Harpe, pres

l'Eglise saint Cosme.



Par le Roy et le Royne, par le Roy et le Royne

Avec prouision de privilège de Roy, De nouvel obtenu par le Roy et le Royne

Pour les liures la par luy imprimés et qui l'imprimeront cy après jusques à fin de vie

Le Roy et le Royne
par le Roy et le Royne
Paris

SUPERIUS

Staff 1: Musical notation for Soprano with labels 'Basse' and 'danse' on the left.

Staff 2: Musical notation for Soprano with labels 'Basse' and 'danse' on the right.

Staff 3: Musical notation for Soprano.

Tenor

Staff 4: Musical notation for Tenor with labels 'Basse' and 'danse' on the left.

Staff 5: Musical notation for Tenor with labels 'Basse' and 'danse' on the right.

Staff 6: Musical notation for Tenor.

CONTRATENOR

Staff 1: Musical notation for Contralto with labels 'Basse' and 'danse' on the left.

Staff 2: Musical notation for Contralto with labels 'Basse' and 'danse' on the right.

Staff 3: Musical notation for Contralto.

BASSUS.

Staff 4: Musical notation for Bass with labels 'Basse' and 'danse' on the left.

Staff 5: Musical notation for Bass with labels 'Basse' and 'danse' on the right.

Staff 6: Musical notation for Bass.

SUPERIUS

Baſſe
Alte

Musical staff for Soprano (SUPERIUS) with notes and rests.

Musical staff for Soprano (SUPERIUS) with notes and rests.

Musical staff for Soprano (SUPERIUS) with notes and rests.

TENOR

Baſſe
Alte

Musical staff for Tenor (TENOR) with notes and rests.

Musical staff for Tenor (TENOR) with notes and rests.

Musical staff for Tenor (TENOR) with notes and rests.

CONTRATENOR

Pa. II r

Baſſe
Alte

Musical staff for Contratenor (CONTRATENOR) with notes and rests.

Musical staff for Contratenor (CONTRATENOR) with notes and rests.

Musical staff for Contratenor (CONTRATENOR) with notes and rests.

BASSVS

Baſſe
Alte

Musical staff for Bass (BASSVS) with notes and rests.

Musical staff for Bass (BASSVS) with notes and rests.

Musical staff for Bass (BASSVS) with notes and rests.

SVPERIVS

Ruffe
danc

TENOR

Ruffe
danc

CONTRATENOR

Fo III I

Ruffe
danc

BASSVS

Ruffe
danc

SUPERIUS

Amice Basses

Celle qui ma le nom d'amy donne

TENOR

Amice Basses

CONTRATENOR

Amice Basses

BASSVS

Amice Basses

SUPERIUS

Musical staff for Soprano (SUPERIUS) with vocal line and piano accompaniment. Includes the instruction 'Basso' and 'Basso' on the left side.

La voluntate

Musical staff for Soprano (SUPERIUS) with vocal line and piano accompaniment.

Musical staff for Soprano (SUPERIUS) with vocal line and piano accompaniment.

TENOR

Musical staff for Tenor (TENOR) with vocal line and piano accompaniment. Includes the instruction 'Basso' and 'Basso' on the left side.

Musical staff for Tenor (TENOR) with vocal line and piano accompaniment.

Musical staff for Tenor (TENOR) with vocal line and piano accompaniment.

CONTRATENOR

Musical staff for Contralto (CONTRATENOR) with vocal line and piano accompaniment. Includes the instruction 'Basso' and 'Basso' on the left side, and the number '71' on the right.

Musical staff for Contralto (CONTRATENOR) with vocal line and piano accompaniment.

Musical staff for Contralto (CONTRATENOR) with vocal line and piano accompaniment.

BASSVS

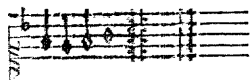
Musical staff for Bass (BASSVS) with vocal line and piano accompaniment. Includes the instruction 'Basso' and 'Basso' on the left side.

Musical staff for Bass (BASSVS) with vocal line and piano accompaniment.

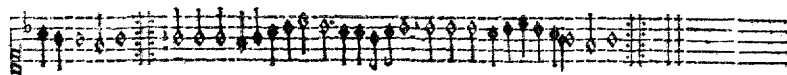
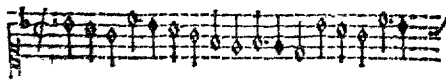
Musical staff for Bass (BASSVS) with vocal line and piano accompaniment.

SUPERIUS

Tourdon

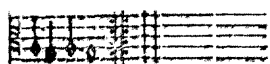
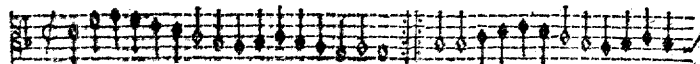


Tourdon

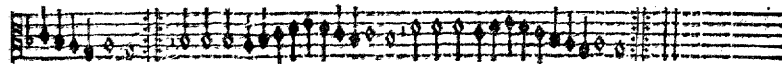
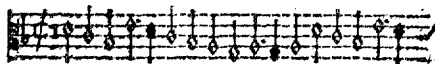


TENOR

Tourdon

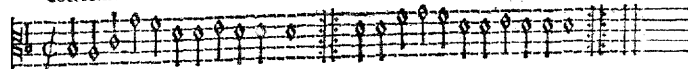


Tourdon

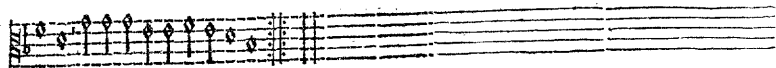
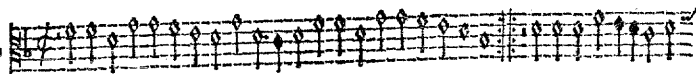


CONTRATENOR

Tourdon



Tourdon

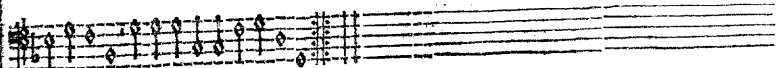
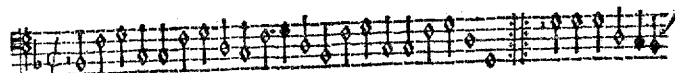


BASSVS.

Tourdon



Tourdon



SUPERIUS

Tou dion

Tou dion

TENOR

Tou dion

Tou dion

Tou dion

Tou dion

Detailed description: This block contains the musical notation for the Soprano and Tenor parts. The Soprano part is labeled 'SUPERIUS' and the Tenor part is labeled 'TENOR'. Both parts are written on a single staff with a treble clef and a key signature of one flat. The Soprano part begins with a 'Tou dion' instruction. The Tenor part also begins with a 'Tou dion' instruction. The notation includes various note values, rests, and bar lines.

CONTRATENOR

Tou dion

Tou dion

BASSUS

Tou dion

Tou dion

Tou dion

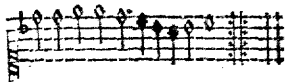
Tou dion

Es viii

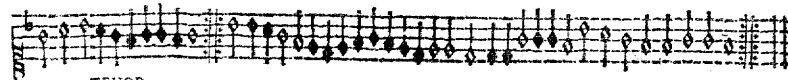
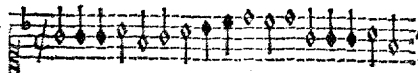
Detailed description: This block contains the musical notation for the Contralto and Bass parts. The Contralto part is labeled 'CONTRATENOR' and the Bass part is labeled 'BASSUS'. Both parts are written on a single staff with a bass clef and a key signature of one flat. The Contralto part begins with a 'Tou dion' instruction. The Bass part also begins with a 'Tou dion' instruction. The notation includes various note values, rests, and bar lines. The page concludes with the Roman numeral 'Es viii'.

SUPERIUS

Branle

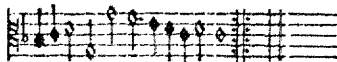
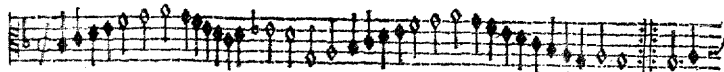


Branle

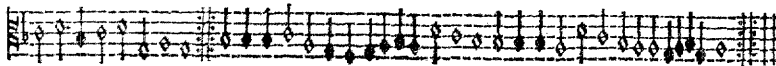


TENOR

Branle



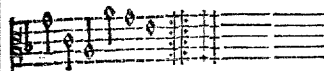
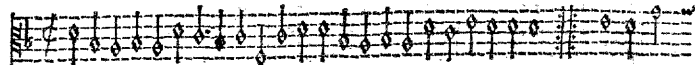
Branle



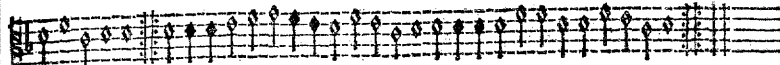
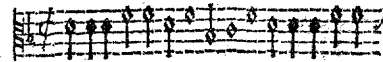
CONTRATENOR

Fo IX

Branle

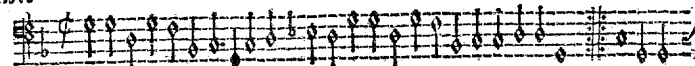


Branle

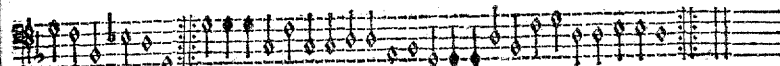
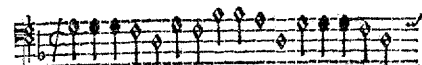


BASSVS

Branle

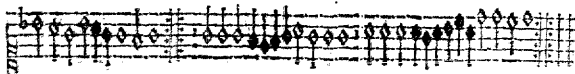


Branle

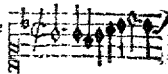


SUPERIUS

Tourbillon

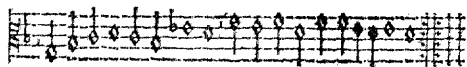
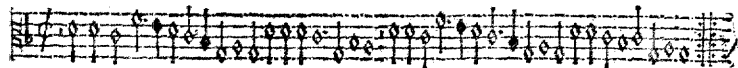


Braille

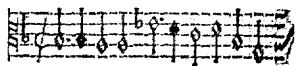


TENOR

Tourbillon



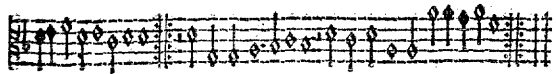
Braille



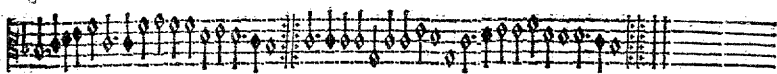
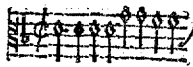
CONTRATENOR

Fo X

Tourbillon

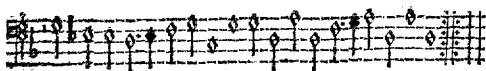
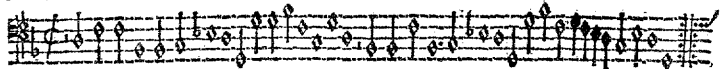


Braille

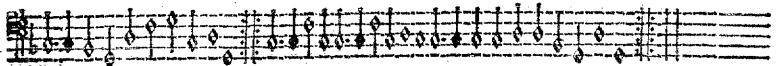
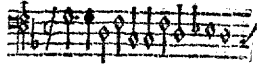


BASSUS

Tourbillon

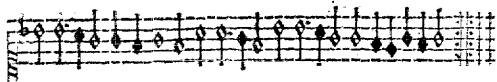
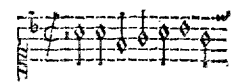


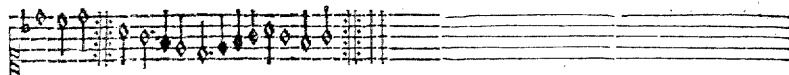
Braille




SUPERIUS

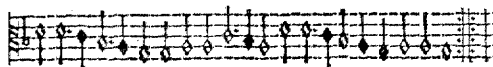
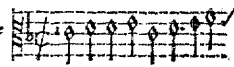
Branle 

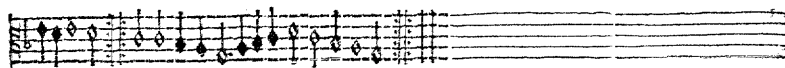
 Branle 



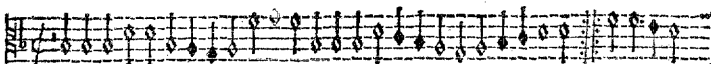
TENOR

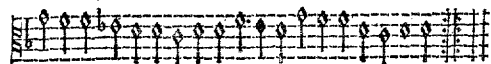
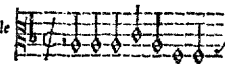
Branle 

 Branle 



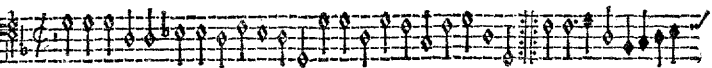
CONTRATENOR

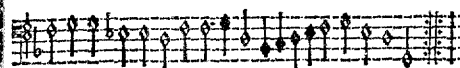
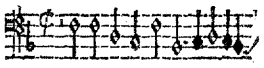
Branle 

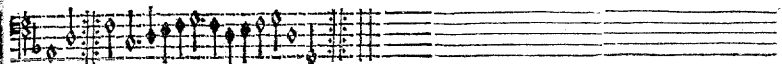
 Branle 



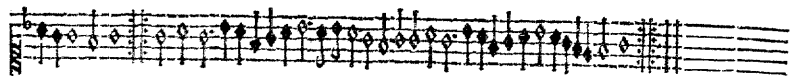
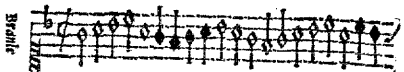
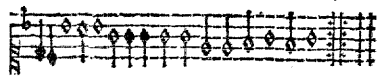
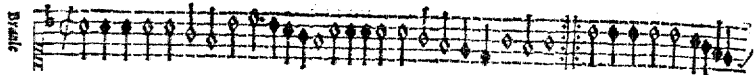
BASSVS.

Branle 

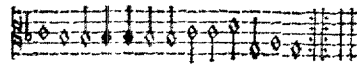
 Branle 



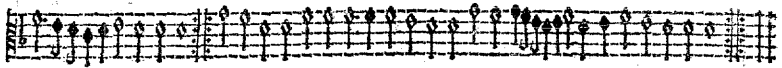
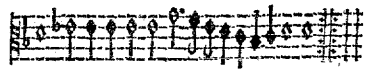
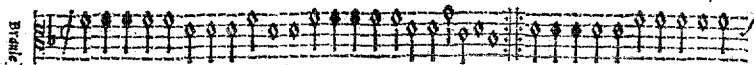
SPÉRIUS



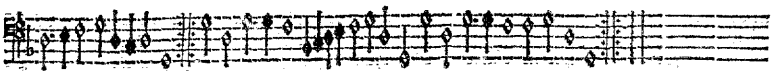
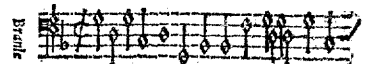
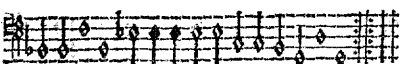
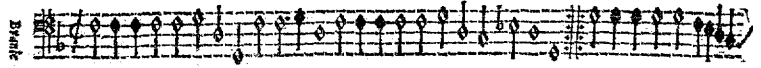
TENOR



CONTRATENOR


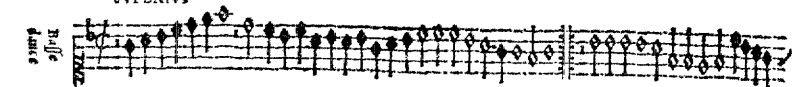


BASSVS

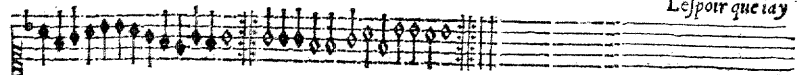


SPERIVS

Brille
Basse
danse

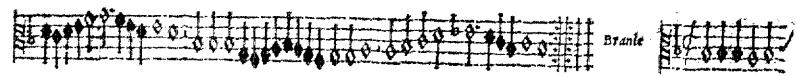
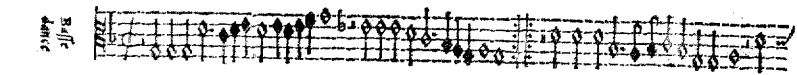


Brille
L'esper que iay

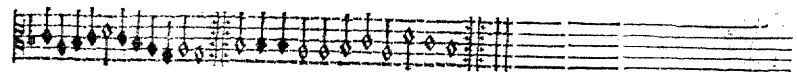


TENOR

Brille
Basse
danse



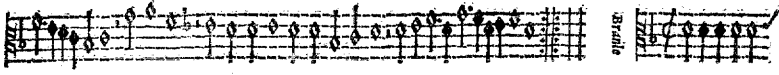
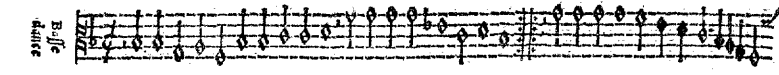
Brille



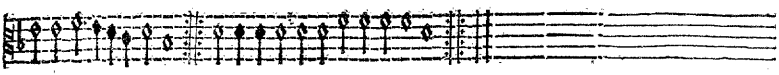
CONTRATENOR

Fo. X III

Brille
Basse
danse

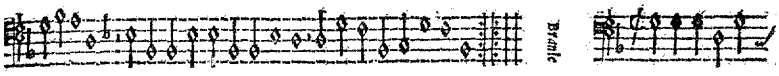
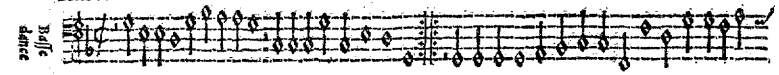


Brille

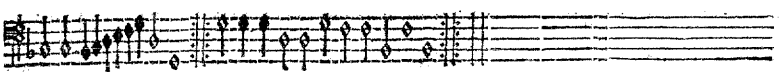


BASSVS

Brille
Basse
danse



Brille



SUPERIUS

Bravé

Bravé

Mari ie songeas laulre iour

TENOR

Bravé

Bravé

CONTRATENCOR

Fo XIII

Bravé

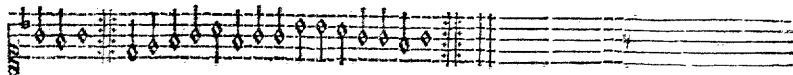
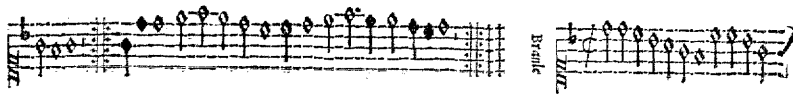
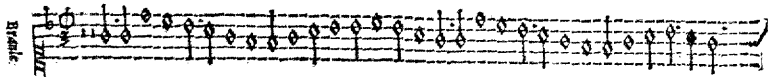
Bravé

BASSVS

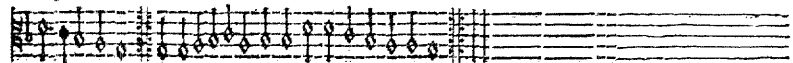
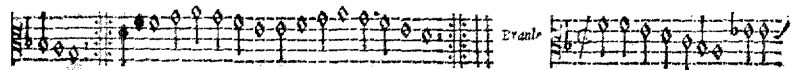
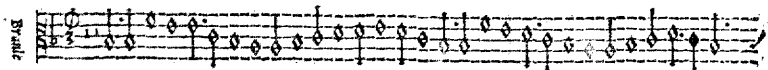
Bravé

Bravé

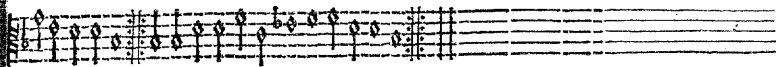
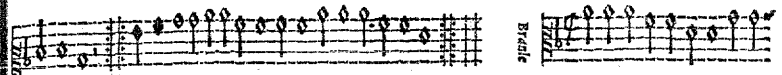
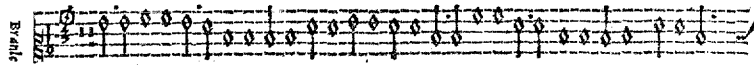
SVPERIVS



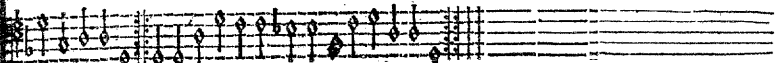
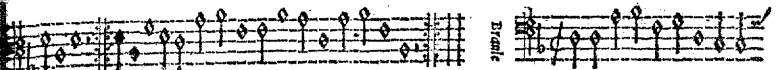
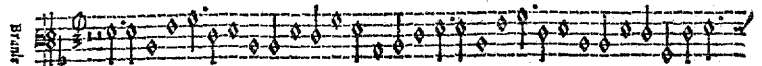
TENOR



CONTRATENCOR



BASSVS.



SUPERIUS

Braille musical notation for the Soprano part, first system.

Braille musical notation for the Soprano part, second system.

Empty Braille musical staff for the Soprano part, third system.

TENOR

Braille musical notation for the Tenor part, first system.

Braille musical notation for the Tenor part, second system.

Braille musical notation for the Tenor part, third system.

CONTRATENOR

Fo XVI

Braille musical notation for the Contratenor part, first system.

Braille musical notation for the Contratenor part, second system.

Empty Braille musical staff for the Contratenor part, third system.

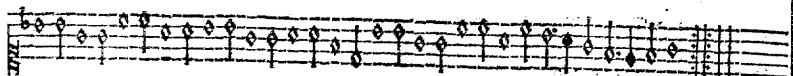
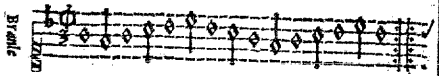
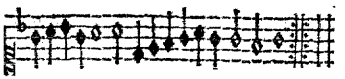
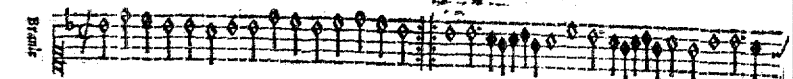
BASSVS

Braille musical notation for the Bass part, first system.

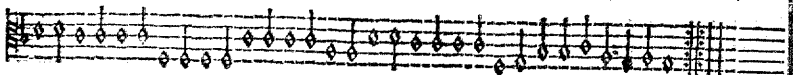
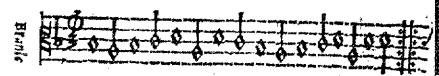
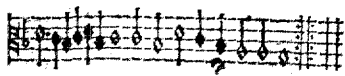
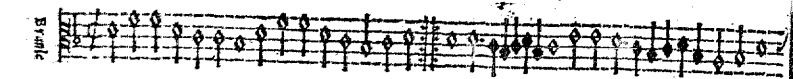
Braille musical notation for the Bass part, second system.

Braille musical notation for the Bass part, third system.

SVPERIVS

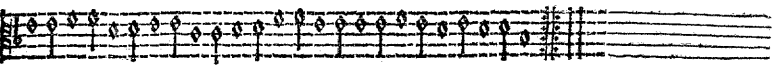
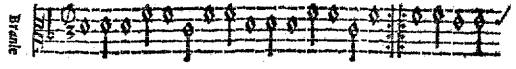
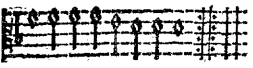
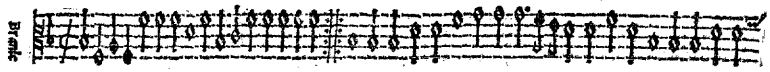


TENOR

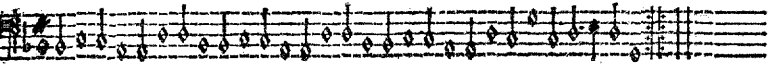
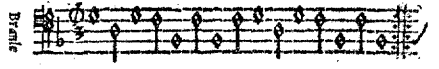
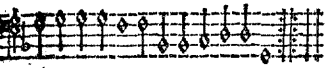
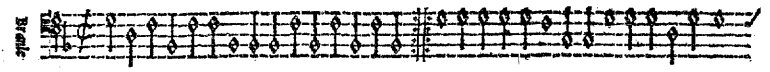


CONTRATENOR

Fo. XVII



BASSVS



SPERIVS

Blaffe
d'ance

Au pres de nous

TENOR

Blaffe
d'ance

CONTRATENOR

FO XVIII

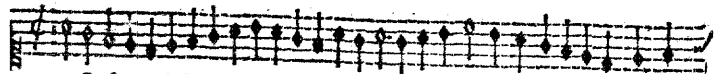
Blaffe
d'ance

BASSVS

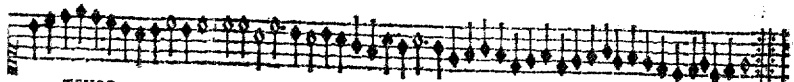
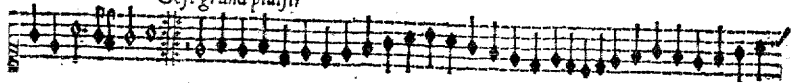
Blaffe
d'ance

SUPERIUS

TURBIDON

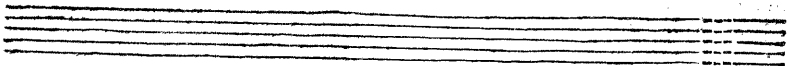
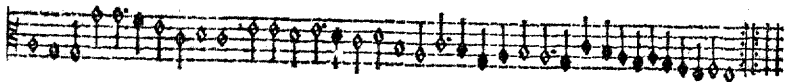


C'est grand plaisir



TENOR

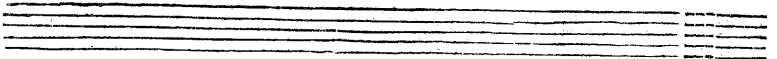
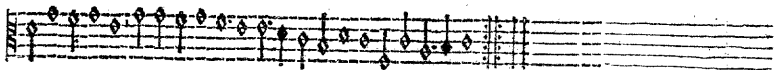
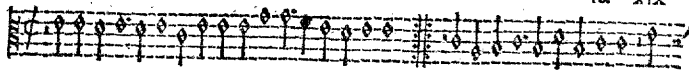
TURBIDON



CONTRATENOR

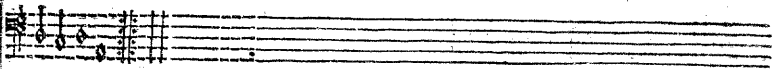
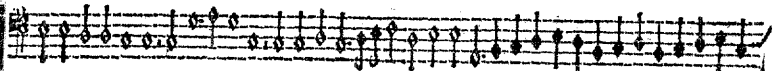
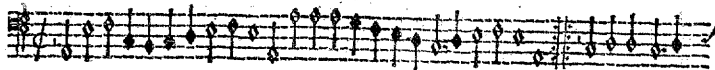
Fa. XIX

TURBIDON



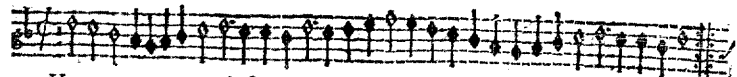
BASSVS.

TURBIDON

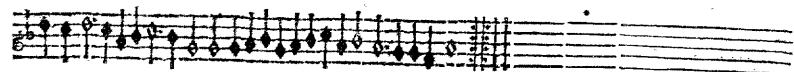


SUPÉRIUS

Tourbillon

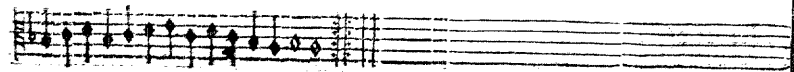
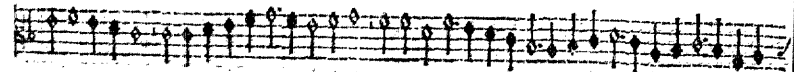
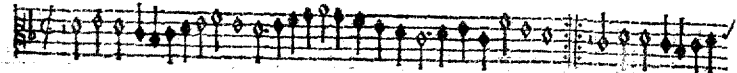


Vous aurez tout ce qui est myen



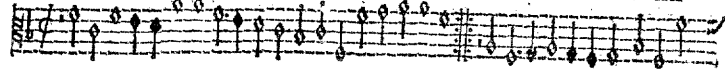
TENOR

Tourbillon

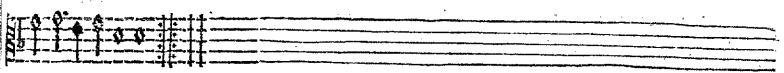


CONTRATENOR

Tourbillon

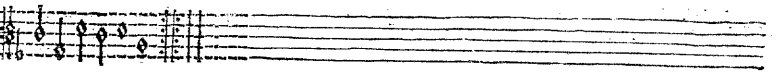
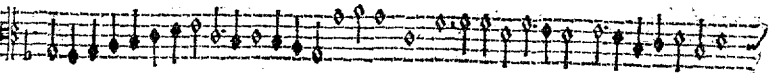
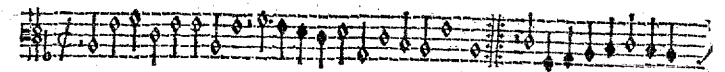


Fo XX



BASSVS

Tourbillon



SUPERIUS

Basso
Alto

TENOR

Basso
Alto

CONTRATENOR

Basso
Alto

BASSVS

Basso
Alto

SPERIVS

Bass
 Dance

Content desir.

TENOR

Bass
 Dance

CONTRATENOR

Bass
 Dance

BASSVS

Bass
 Dance

SUPERIUS

Bass
 Altus
 Tenor

Par *in despit*

TENOR

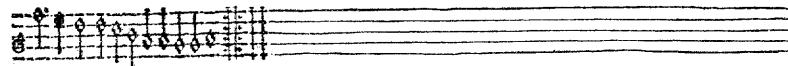
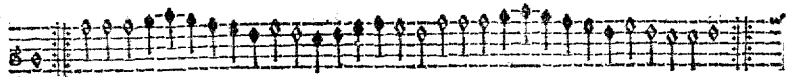
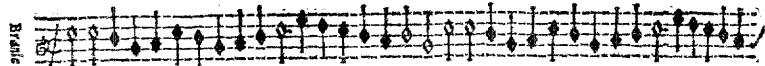
Bass
 Altus
 Tenor

CONTRATENOR

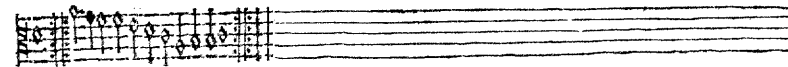
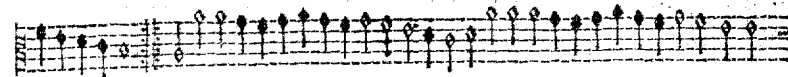
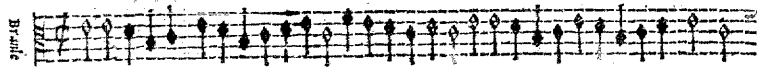
Bass
 Altus
 Tenor

Bass
 Altus
 Tenor

SUPERIUS

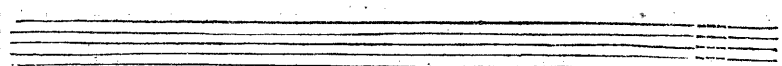
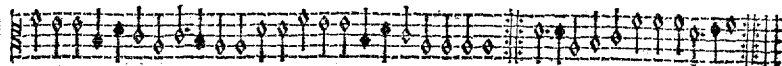
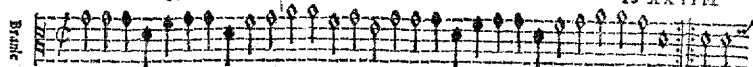


TENOR

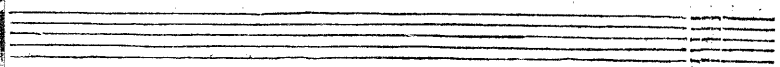
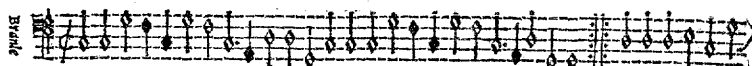


CONTRATENOR

Fo XXIIII



BASSVS



SUPERIUS

Braille
847

TENOR

Braille
847

Que ie chatouille ta fossene

CONTRATENOR

Fo. XXV

Braille
847

BASSUS

Braille
847

SUPERIUS

Braille
Musical notation for Soprano part, first line.

Braille
Musical notation for Soprano part, second line.

Braille
danse

Braille
Musical notation for Soprano part, third line.

Trop de regretz

Braille
Musical notation for Soprano part, fourth line.

TENOR

Braille
Musical notation for Tenor part, first line.

Braille
Musical notation for Tenor part, second line.

Braille
Musical notation for Tenor part, third line.

CONTRATENOR

Fo XXVI

Braille
Musical notation for Contratenor part, first line.

Braille
Musical notation for Contratenor part, second line.

Braille
Musical notation for Contratenor part, third line.

BASSVS.

Braille
Musical notation for Bass part, first line.

Braille
Musical notation for Bass part, second line.

Braille
Musical notation for Bass part, third line.

SPERIVS

Tourdon

Tourdon

Tourdon

Tourdon

Tourdon

TENOR

Tourdon

Tourdon

Tourdon

Tourdon

Tourdon

CONTRATENOR

Tourdon

Boy tourdon sans faire dantes et sans

Tourdon

Tourdon

Tourdon

Tourdon

BASSVS

Tourdon

Tourdon

Tourdon

Tourdon

Tourdon

SUPERIUS

Braille

Braille 847

TENOR

Braille

Braille 847

Braille

CONTRATENOR

FO XXVIII

Braille

Braille 847

BASSVS

Braille

Braille 847

Braille

SUPERIUS

Braille musical notation for the Soprano part, first line.

Braille musical notation for the Soprano part, second line.

Braille musical notation for the Soprano part, third line.

TENOR

Braille musical notation for the Tenor part, first line.

Braille musical notation for the Tenor part, second line.

Braille musical notation for the Tenor part, third line.

CONTRATENOR

Fo. XXIX

Braille musical notation for the Contralto part, first line.

Braille musical notation for the Contralto part, second line.

Braille musical notation for the Contralto part, third line.

BASSVS

Braille musical notation for the Bass part, first line.

Braille musical notation for the Bass part, second line.

Braille musical notation for the Bass part, third line.

SPERIVS

Soprano part of 'SPERIVS' consisting of five staves of music. The first staff is labeled 'Soprano' and 'Piano'. The second staff is labeled 'Piano'. The third staff is labeled 'TENOR'. The fourth and fifth staves are labeled 'Piano'.

CONTRATENOR

To XXX

Contratenor part of 'SPERIVS' consisting of five staves of music. The first staff is labeled 'Contratenor' and 'Piano'. The second staff is labeled 'Piano'. The third staff is labeled 'BASSVS.'. The fourth and fifth staves are labeled 'Piano'.

SUPERIUS

QUART

TENOR

QUART

CONTRATENOR

QUART

BASSVS

QUART

SUPERIUS

Gaillarde

Gaillarde

TENOR

Gaillarde

Gaillarde

CONTRATENOR

FD XXXII

Gaillarde

Gaillarde

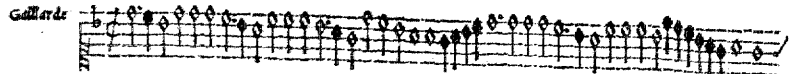
BASSVS

Gaillarde

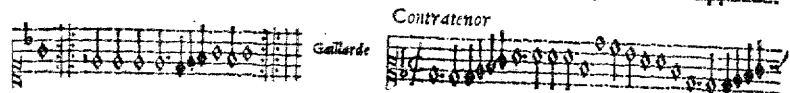
Gaillarde

SUPERIUS

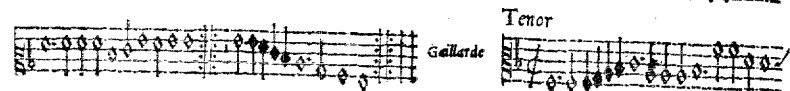
Gaillardie



Contratenor



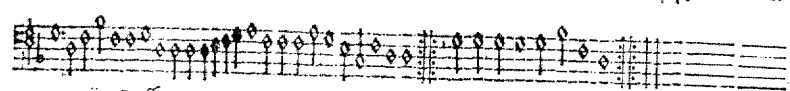
Tenor



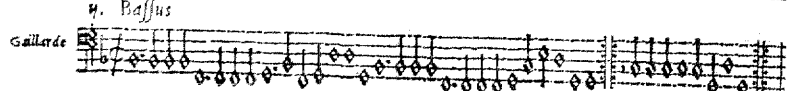
i. Bassus



ii. Bassus



Gaillardie



Finis.