

Premier livre de Violle contenant dix chansons avec l'Introduction de
Recorder, et appliquer les doigts selon la manière qu'on a accoutumé de
jouer, le tout de la composition de Claude Gervaise, imprimé par
le sieur de Pierre Attaignant demourant à Paris en la rue de la Harpe
pres l'Eglise de Cosme le 14 Janvier 1544 avec privilege de six pour neuf ans



in 8° oblong de 32 feuillets. (Inclus dans le catalogue de la bibliothèque)

Le premier livre imprimé (en juin 1505) ainsi que la fin du livre septième
de quatre feuillets 20 inclusifs!

V. 2713.

Secōd liure contenāt trois Gaillardes,

TROIS PAVANES, VINGT TROIS BRANLES,

Tant gays, Simples, Que doubles, Douze basses danciers, et Neuf tourdions;

En somme Cinquante, Le tout ordonne selon les huit tons. Et

nonuellement imprimé en Musique a quatre parties, en ung

liure seul, par Pierre Attaignant, Imprimeur

de musique du Roy, demourant a Paris

en la Rue de la Harpe, pres

l'Eglise saint Cosme.

1547.



Musique de Claude Gervaise, & de Pierre Attaignant, & de Pierre de la Rue.

Avec prerogation du privilege du Roy, De nouvel obtenu par ledit musicien
Pour les liures la parlay imprimé & qui imprimera cy après jusques a six ans

ii. 16

Attaignant
Paris
1547

ff

Tenor

ff

BASSVS.

SOPRANO

Musical staff for Soprano, first system.

Musical staff for Soprano, second system.

Musical staff for Soprano, third system.

TENOR

Musical staff for Tenor, first system.

Musical staff for Tenor, second system.

Musical staff for Tenor, third system.

CONTRATENO

Musical staff for Contratenor, first system.

Musical staff for Contratenor, second system.

Musical staff for Contratenor, third system.

BASSVS

Musical staff for Bass, first system.

Musical staff for Bass, second system.

Musical staff for Bass, third system.

SUPERIUS

Chorale
Cantata

TENOR

Chorale
Cantata

CONTRATENOR

Chorale
Cantata

BASSVS

Chorale
Cantata

SOPRANO
Soprano staff with musical notation and lyrics.

Celle qui ma le nom d'auy donne

Second staff of musical notation.

Third staff of musical notation.

TENOR

Tenor staff with musical notation and lyrics.

Fourth staff of musical notation.

Fifth staff of musical notation.

CONTRATENOR
Contralto staff with musical notation.

Sixth staff of musical notation.

Seventh staff of musical notation.

BASSVS

Bass staff with musical notation and lyrics.

Eighth staff of musical notation.

Ninth staff of musical notation.

SUPERIUS
Musical notation for the Soprano part, starting with a treble clef and a dynamic marking of *ff*.

La solenne
Musical notation for the Soprano part, continuing the melody.

Musical notation for the Soprano part, continuing the melody.

TENOR
Musical notation for the Tenor part, starting with a bass clef and a dynamic marking of *ff*.

Musical notation for the Tenor part, continuing the melody.

Musical notation for the Tenor part, continuing the melody.

CONTRATENOR
Musical notation for the Contralto part, starting with a bass clef and a dynamic marking of *ff*. Measure numbers 16 and 71 are visible at the end of the staff.

Musical notation for the Contralto part, continuing the melody.

Musical notation for the Contralto part, continuing the melody.

BASSUS
Musical notation for the Bass part, starting with a bass clef and a dynamic marking of *ff*.

Musical notation for the Bass part, continuing the melody.

Musical notation for the Bass part, continuing the melody.

SOPRANUS

Tenore

Musical notation for the Soprano part, consisting of a vocal line and piano accompaniment. The vocal line begins with a treble clef and a key signature of one flat. The piano accompaniment is written in a lower register.

TENOR

Tenore

Musical notation for the Tenor part, consisting of a vocal line and piano accompaniment. The vocal line begins with a bass clef and a key signature of one flat. The piano accompaniment is written in a lower register.

CONTRATENOR

Tenore

Musical notation for the Contratenor part, consisting of a vocal line and piano accompaniment. The vocal line begins with a treble clef and a key signature of one flat. The piano accompaniment is written in a lower register.

BASSVS.

Tenore

Musical notation for the Bass part, consisting of a vocal line and piano accompaniment. The vocal line begins with a bass clef and a key signature of one flat. The piano accompaniment is written in a lower register.

OPERA

Soprano I

Soprano II

Tenor

Bass

Soprano III

Bass II

CONTRATENOR

Contratenor

So VII

Soprano IV

Bass III

Bass IV

Soprano V

Bass V

Organo

SUPERIUS



Organo

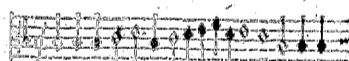


TENOR

Organo



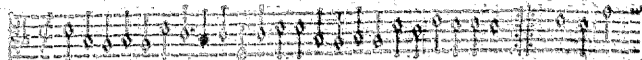
Organo



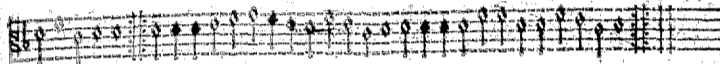
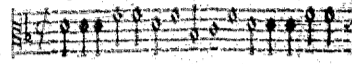
CONTRATENOR

So III

Organo

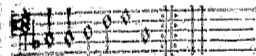
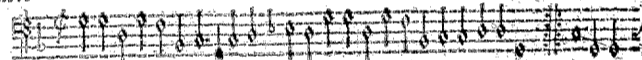


Organo

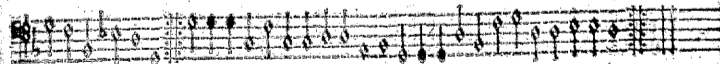


BASSUS

Organo



Organo



OPERA

Musical staff with notes and rests.

Musical staff with notes and rests. Includes a bracketed section labeled "Branle".

Musical staff with notes and rests.

TENOR

Musical staff with notes and rests.

Musical staff with notes and rests. Includes a bracketed section labeled "Branle".

Musical staff with notes and rests.

CONTRATENOR

23

Musical staff with notes and rests.

Musical staff with notes and rests. Includes a bracketed section labeled "Branle".

Musical staff with notes and rests.

BASS

Musical staff with notes and rests.

Musical staff with notes and rests. Includes a bracketed section labeled "Branle".

Musical staff with notes and rests.

22

24

SUPERIUS

Brano Musical notation for the first system of the Soprano part.

Brano Musical notation for the second system of the Soprano part.

Brano Musical notation for the third system of the Soprano part.

TENOR

Brano Musical notation for the first system of the Tenor part.

Brano Musical notation for the second system of the Tenor part.

Brano Musical notation for the third system of the Tenor part.

CONTRATENOR

Brano Musical notation for the first system of the Contratenor part.

Brano Musical notation for the second system of the Contratenor part.

Brano Musical notation for the third system of the Contratenor part.

BASSVS.

Brano Musical notation for the first system of the Bass part.

Brano Musical notation for the second system of the Bass part.

Brano Musical notation for the third system of the Bass part.

SUPERIUS

First staff of music for the Soprano part, starting with a treble clef and a key signature of one flat.

Second and third staves of music for the Soprano part, continuing the melodic line.

Fourth staff of music for the Soprano part, showing a continuation of the melody.

TENOR

First staff of music for the Tenor part, starting with a bass clef and a key signature of one flat.

Second and third staves of music for the Tenor part, continuing the melodic line.

Fourth staff of music for the Tenor part, showing a continuation of the melody.

CONTRATENOR

First staff of music for the Contralto part, starting with a bass clef and a key signature of one flat.

Second and third staves of music for the Contralto part, continuing the melodic line.

Fourth staff of music for the Contralto part, showing a continuation of the melody.

BASSUS

First staff of music for the Bass part, starting with a bass clef and a key signature of one flat.

Second and third staves of music for the Bass part, continuing the melodic line.

Fourth staff of music for the Bass part, showing a continuation of the melody.

SOPRANO

First staff of music for Soprano, including a dynamic marking of *ff*.

Second staff of music for Soprano, including a dynamic marking of *ff* and a *Bravo* marking.

Third staff of music for Soprano, including the lyrics "L'espoir que j'ay".

TENOR

First staff of music for Tenor, including a dynamic marking of *ff*.

Second staff of music for Tenor, including a dynamic marking of *ff* and a *Bravo* marking.

Third staff of music for Tenor.

CONTRATENOR

First staff of music for Contratenor, including a dynamic marking of *ff*.

Second staff of music for Contratenor, including a dynamic marking of *ff* and a *Bravo* marking.

Third staff of music for Contratenor.

BASSVS

First staff of music for Bass, including a dynamic marking of *ff*.

Second staff of music for Bass, including a dynamic marking of *ff* and a *Bravo* marking.

Third staff of music for Bass.

SUPERIORS

Tranilo
Musical staff for the first vocal part of the Superiors.

Musical staff for the second vocal part of the Superiors.

Musical staff for the third vocal part of the Superiors.

TENOR

Musical staff for the Tenor part.

Musical staff for the first vocal part of the Basses.

Musical staff for the second vocal part of the Basses.

Mariae songeois lantre iour

CONTRATENOR

Fo XIII

Tranilo
Musical staff for the Contratenor part.

Tranilo
Musical staff for the first vocal part of the Basses.

Musical staff for the second vocal part of the Basses.

BASSVS

Tranilo
Musical staff for the Basses part.

Tranilo
Musical staff for the first vocal part of the Basses.

Musical staff for the second vocal part of the Basses.

SUPERIUS

Musical staff for Superius with a 'Breathe' marking.

Musical staff for Superius with a 'Breathe' marking.

Musical staff for Superius.

TENOR

Musical staff for Tenor with a 'Breathe' marking.

Musical staff for Tenor with a 'Breathe' marking.

Musical staff for Tenor.

CONTRATENS

Musical staff for Contratenor with a 'Breathe' marking.

Musical staff for Contratenor with a 'Breathe' marking.

Musical staff for Contratenor.

BASSVS

Musical staff for Bassus with a 'Breathe' marking.

Musical staff for Bassus with a 'Breathe' marking.

Musical staff for Bassus.

SUPERIUS

BRIDGE

CONTRATENOR

BRIDGE

BRIDGE

BRIDGE

TENOR

BASSUS

TENOR

BASSUS

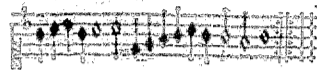
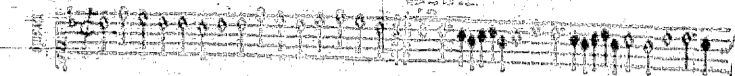
BRIDGE

BRIDGE

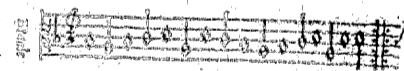
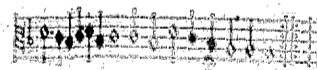
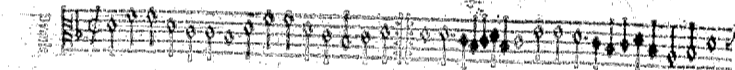
TENOR

BASSUS

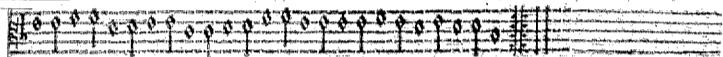
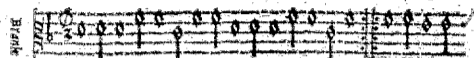
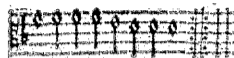
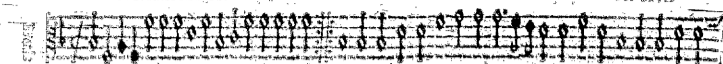
SUPERIORS



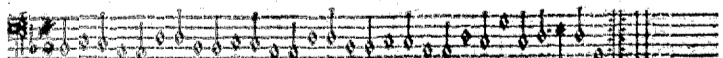
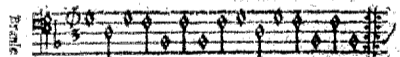
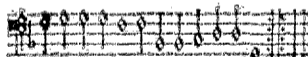
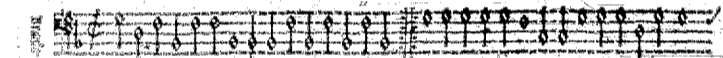
TENOR



CONTRATENOR



BASSVS



SUPERIORS

ff
Andte

Au pres de nous

TENOR

ff
Andte

CONTRATENOR

17. XVIII

ff
Andte

BASSUS

ff
Andte

OPÉRA

CHORUS

A musical staff with a treble clef and a key signature of one flat. It contains a series of notes, mostly quarter and eighth notes, with some rests. The notes are mostly on the middle lines of the staff.

Grand plaisir

A musical staff with a treble clef and a key signature of one flat. It contains a series of notes, mostly quarter and eighth notes, with some rests. The notes are mostly on the middle lines of the staff.

A musical staff with a treble clef and a key signature of one flat. It contains a series of notes, mostly quarter and eighth notes, with some rests. The notes are mostly on the middle lines of the staff.

TENOR

CHORUS

A musical staff with a treble clef and a key signature of one flat. It contains a series of notes, mostly quarter and eighth notes, with some rests. The notes are mostly on the middle lines of the staff.

A musical staff with a treble clef and a key signature of one flat. It contains a series of notes, mostly quarter and eighth notes, with some rests. The notes are mostly on the middle lines of the staff.

Two empty musical staves, one above the other, with no notes or clefs.

CONTRATENOR

Ed. STIC

CHORUS

A musical staff with a treble clef and a key signature of one flat. It contains a series of notes, mostly quarter and eighth notes, with some rests. The notes are mostly on the middle lines of the staff.

A musical staff with a treble clef and a key signature of one flat. It contains a series of notes, mostly quarter and eighth notes, with some rests. The notes are mostly on the middle lines of the staff.

Two empty musical staves, one above the other, with no notes or clefs.

BASSVS.

CHORUS

A musical staff with a bass clef and a key signature of one flat. It contains a series of notes, mostly quarter and eighth notes, with some rests. The notes are mostly on the middle lines of the staff.

A musical staff with a bass clef and a key signature of one flat. It contains a series of notes, mostly quarter and eighth notes, with some rests. The notes are mostly on the middle lines of the staff.

A musical staff with a bass clef and a key signature of one flat. It contains a series of notes, mostly quarter and eighth notes, with some rests. The notes are mostly on the middle lines of the staff.

SUPERIUS

Musical staff for Soprano with lyrics: Vous aurez tout ce qui est myen

Vous aurez tout ce qui est myen

Musical staff for Soprano

Musical staff for Soprano

TENOR

Musical staff for Tenor

Musical staff for Tenor

Musical staff for Tenor

CONTRATENOR

Musical staff for Contralto

Musical staff for Contralto

Musical staff for Contralto

BASSYS

Musical staff for Bass

Musical staff for Bass

Musical staff for Bass

1822



Musical staff with notes and a clef.



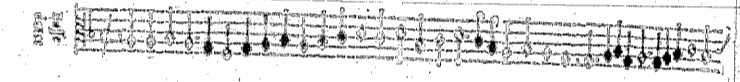
Musical staff with notes.



Musical staff with notes.

TENOR

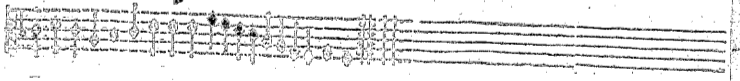
1822



Musical staff with notes and a clef.



Musical staff with notes.

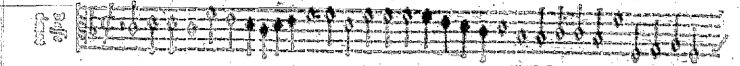


Musical staff with notes.

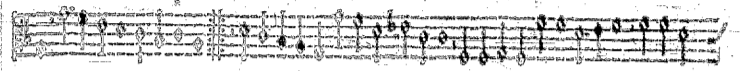
CONTRATENOR

Fo. XXI

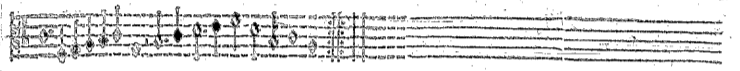
1822



Musical staff with notes and a clef.



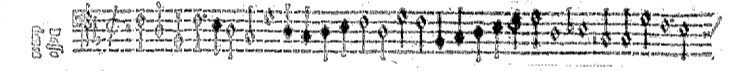
Musical staff with notes.



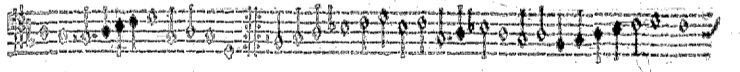
Musical staff with notes.

BASSUS


1822



Musical staff with notes and a clef.



Musical staff with notes.



Musical staff with notes.

No. of.

SUPERIUS

Musical staff for Soprano with vocal line and piano accompaniment.

Content desir.

Musical staff for Soprano with vocal line and piano accompaniment.

Musical staff for Soprano with vocal line and piano accompaniment.

TENOR

Musical staff for Tenor with vocal line and piano accompaniment.

Musical staff for Tenor with vocal line and piano accompaniment.

Musical staff for Tenor with vocal line and piano accompaniment.

CONTRATENOR

Musical staff for Contralto with vocal line and piano accompaniment.

Musical staff for Contralto with vocal line and piano accompaniment.

Musical staff for Contralto with vocal line and piano accompaniment.

BASSVS

Musical staff for Bass with vocal line and piano accompaniment.

Musical staff for Bass with vocal line and piano accompaniment.

Musical staff for Bass with vocal line and piano accompaniment.

SUPERIUS

Alte
Bass

Par In despic

TENOR

Bass
Alte

CONTRATENOR

Bass
Alte

Bass
Alte

SUPERIUS

Musical staff for Soprano (Superius) with notes and a fermata.

Musical staff for Soprano (Superius) with notes.

Musical staff for Soprano (Superius) with notes.

TENOR

Musical staff for Tenor with notes.

Musical staff for Tenor with notes.

Musical staff for Tenor with notes.

CONTRATENOR

ES XXIII

Musical staff for Contratenor with notes.

Musical staff for Contratenor with notes.

Empty musical staff for Contratenor.

BASSVS

Musical staff for Bass with notes.

Musical staff for Bass with notes.

Empty musical staff for Bass.

SUPERIUS

Bravis 849

TENOR

Bravis 849

Que ie charonlle ra fossene

CONTRATENOR

Bravis 849

BASSUS

Bravis 849

SUPERIUS

Musical staff for Soprano (Superius) with notes and rests.

Musical staff for Soprano (Superius) with notes and rests.

Musical staff for Soprano (Superius) with notes and rests.

Trop de regretz

Musical staff for Soprano (Superius) with notes and rests.

TENOR

Musical staff for Tenor with notes and rests.

Musical staff for Tenor with notes and rests.

Musical staff for Tenor with notes and rests.

CONTRATENOR

XXVII

Musical staff for Contratenor with notes and rests.

Musical staff for Contratenor with notes and rests.

Musical staff for Contratenor with notes and rests.

BASSVS.

Musical staff for Bass with notes and rests.

Musical staff for Bass with notes and rests.

Musical staff for Bass with notes and rests.

SOPRANO

First staff of music for Soprano.

Second staff of music for Soprano.

Third staff of music for Soprano.

TENOR

First staff of music for Tenor.

Second staff of music for Tenor.

Third staff of music for Tenor.

CONTRATENOR

First staff of music for Contratenor.

Ben cordon sans faire l'air de son

Second staff of music for Contratenor.

Third staff of music for Contratenor.

BASS

First staff of music for Bass.

Second staff of music for Bass.

Third staff of music for Bass.

SPERIVS

Musical staff for Soprano with notes and rests.

Musical staff for Soprano.

Musical staff for Soprano.

Musical staff for Soprano.

TENOR

Musical staff for Tenor with notes and rests.

Musical staff for Tenor.

Musical staff for Tenor.

Musical staff for Tenor.

CONTRATENOR

No XXV III

Musical staff for Contratenor with notes and rests.

Musical staff for Contratenor.

Musical staff for Contratenor.

Musical staff for Contratenor.

BASSVS

Musical staff for Bass with notes and rests.

Musical staff for Bass.

Musical staff for Bass.

Musical staff for Bass.

OPERA

Soprano musical staff with notes and rests.

Musical staff for Soprano, continuing the melody.

Musical staff for Soprano, continuing the melody.

TENOR

Tenor musical staff with notes and rests.

Musical staff for Tenor, continuing the melody.

Musical staff for Tenor, continuing the melody.

CONTRATENOR

Fo. XXIX

Contratenor musical staff with notes and rests.

Musical staff for Contratenor, continuing the melody.

Musical staff for Contratenor, continuing the melody.

BASSVS

Bass musical staff with notes and rests.

Musical staff for Bass, continuing the melody.

Musical staff for Bass, continuing the melody.

Soprano

SUPERIUS

First musical staff for Soprano part.

Second musical staff for Soprano part.

Third musical staff for Soprano part.

Fourth musical staff for Soprano part.

TENOR

First musical staff for Tenor part.

Second musical staff for Tenor part.

Third musical staff for Tenor part.

Fourth musical staff for Tenor part.

CONTRATENOR

First musical staff for Contratenor part.

Second musical staff for Contratenor part.

Third musical staff for Contratenor part.

Fourth musical staff for Contratenor part.

BASSVS.

First musical staff for Bass part.

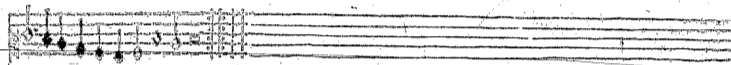
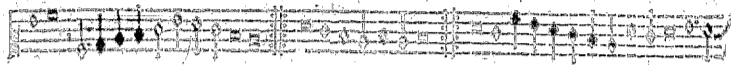
Second musical staff for Bass part.

Third musical staff for Bass part.

Fourth musical staff for Bass part.

SOPRANO

Soprano



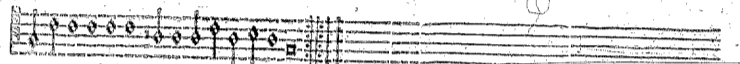
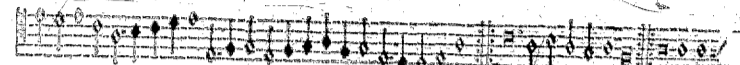
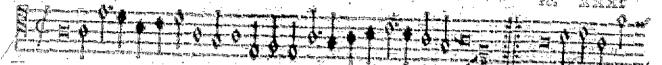
TENOR

Tenor



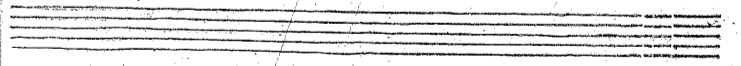
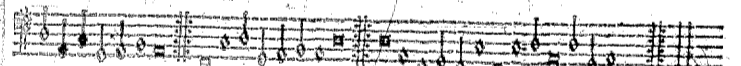
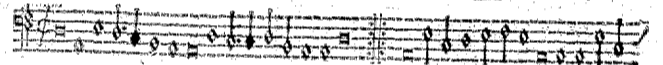
CONTRATENOR

Contratenor



BASSUS

Bassus



SUPERIUS

Gaillarde

Gaillarde

TENOR

Gaillarde

Gaillarde

CONTRATENOR

FO XXIII

Gaillarde

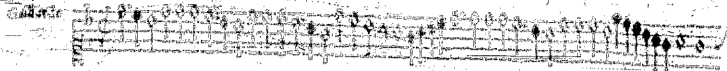
Gaillarde

BASSVS

Gaillarde

Gaillarde

Gallarde



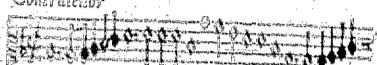
A musical staff with a treble clef and a key signature of one flat (B-flat). It contains a series of notes, mostly eighth and sixteenth notes, with some rests. The staff is labeled 'Gallarde' at the beginning.



A musical staff with a treble clef and a key signature of one flat. It contains a series of notes, mostly eighth and sixteenth notes, with some rests.

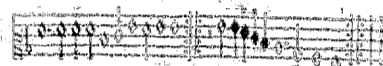
Contratenor

Gallarde



Gallarde

A musical staff with a treble clef and a key signature of one flat. It contains a series of notes, mostly eighth and sixteenth notes, with some rests. The staff is labeled 'Gallarde' at the beginning and 'Contratenor' above it.



A musical staff with a treble clef and a key signature of one flat. It contains a series of notes, mostly eighth and sixteenth notes, with some rests.

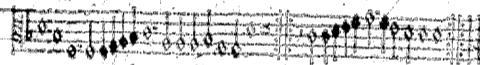
Tenor

Gallarde



Gallarde

A musical staff with a treble clef and a key signature of one flat. It contains a series of notes, mostly eighth and sixteenth notes, with some rests. The staff is labeled 'Gallarde' at the beginning and 'Tenor' above it.



A musical staff with a treble clef and a key signature of one flat. It contains a series of notes, mostly eighth and sixteenth notes, with some rests.

Gallarde

i. Bassus



Gallarde

A musical staff with a bass clef and a key signature of one flat. It contains a series of notes, mostly eighth and sixteenth notes, with some rests. The staff is labeled 'Gallarde' at the beginning and 'i. Bassus' above it.



A musical staff with a treble clef and a key signature of one flat. It contains a series of notes, mostly eighth and sixteenth notes, with some rests.

ii. Bassus

Gallarde



Gallarde

A musical staff with a bass clef and a key signature of one flat. It contains a series of notes, mostly eighth and sixteenth notes, with some rests. The staff is labeled 'Gallarde' at the beginning and 'ii. Bassus' above it.

Fine.