

Parla!

Valse

ARDITI
Transcription
Pierre Montreuille

Flûte

♩ = 184

8

f

17

7

33

p

43

mf *p*

53

cresc.

63

rit *a T°*

dim. *p*

75

f *tr*

86

a T° *p*

95

f *p* *p*

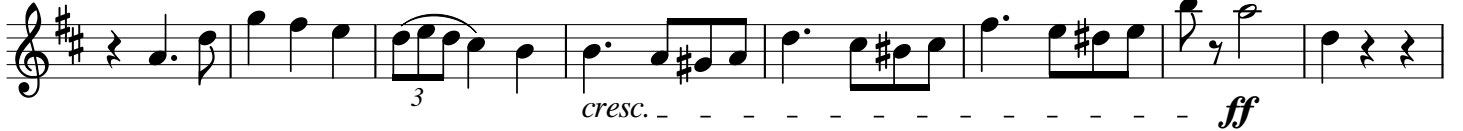
105



115



125



133



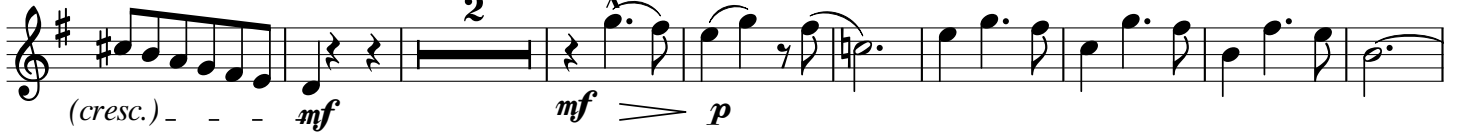
146



156



165



176



188



197



215



226

cresc. *p*

236

246

3

259

p *f*

271

p

280

3 Più animato

291

f

301

312

3

322

ff *f* Più stretto

331

ff **4**