

L' APOTHÉOSE DE LULLI

CONCERT INSTRUMENTAL

Composé à la mémoire immortelle
de l'incomparable M. de LULLI

Transcription par
GEORGES MARTY

FRANÇOIS COUPERIN
(1668-1733)

1^{er} VIOLON (1)

Gravement

1

f *p* *cresc.* *f* *p* *poco a* *Très lentement* *poco cresc.* *f*

Gracieusement

2

p *poco cresc.* *mf* *p* *cresc.* *pp* *poco* *mf* *Rit.* *p* *cresc.* *f*

(1) Les virgules indiquent une respiration dans la période mélodique.

1^{er} VIOLON

Très vite

3

p *cre*

scen *do* *cre* *scen*

f *p* *cre*

do *f* *p*

1^a 2^a

Noblement

4

f

scen *do*

f *p* *f* *p* *cre*

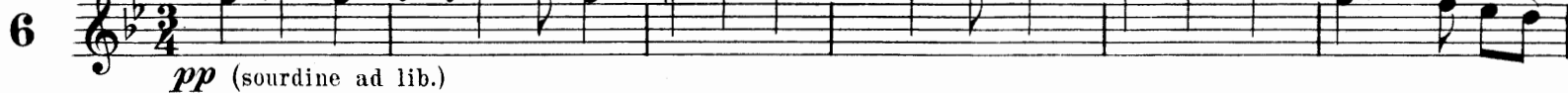
f *Rit.*

Vite

5

p

Dolement et très lié



En rallentissant



Très légèrement



Largo non troppo

Cleps changées (1)



Très lentement



(1) Voir l'avertissement.

Gracieusement

(Clefs françaises)

9

p

poco più f

p

crescen - do

poco a poco cresc.

poco a

poco cresc.

f

Rall. pour finir

1^a

2^a

Elégamment et sans lenteur

(Clefs françaises)

10

f

Doux et modérément

p

All^o mod^{to}

p légèrement

1^a

2^a

Gravement

13

f

p *f*

tr **7**

tr *p*

cre - scen - do poco a poco

f *tr* *Rit.* *tr*

Vivement

14

f

tr

p *tr* *cre -*

scen - do *f* **8**

tr *tr*

p *f*

Musical staff with notes, trills, and dynamics *p*

9

Musical staff with notes, trills, and dynamics *f*

Musical staff with notes, trills, and dynamics *meno f*

Musical staff with notes, trills, and dynamics *dim.*

Musical staff with notes, trills, and dynamics *f*

Rondement. All^o mod^{to} e sostenuto

Musical staff with notes and dynamics *f*

Musical staff with notes and dynamics *p*

Musical staff with notes and dynamics *p*

10

Musical staff with notes, trills, and dynamics *poco più f*

Musical staff with notes, trills, and dynamics *p*

Musical staff with notes, trills, and dynamics *p*

Vivement

Musical score for 1st Violin, measures 11-13. The score is in G major and 3/8 time. It features a vocal line with lyrics and a piano accompaniment.

Measure 11: Starts with a forte (*f*) dynamic. The vocal line begins with the lyrics "e cre - scen - do". The piano accompaniment consists of eighth-note patterns.

Measure 12: Continues the vocal line with lyrics "e cre - scen - do". The piano accompaniment features a trill (*tr*) on the final note.

Measure 13: Continues the vocal line with lyrics "e cre - scen - do". The piano accompaniment features a trill (*tr*) on the final note.

The score includes various musical notations such as dynamics (*f*, *p*), articulation marks (accents, slurs), and trills (*tr*). The tempo is marked "Vivement".