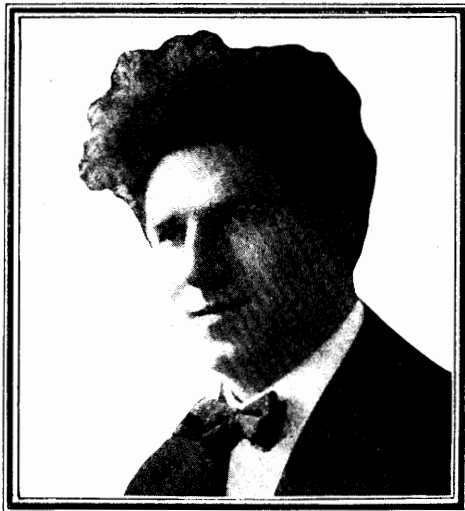


Fischer
Edition

From the Repertoire
of
G. MARTINELLI

Metropolitan Opera House - New York



Gesù Bambino (*The Infant Jesus*)

High, G Low, E PIETRO A. YON NET .60

Ave Maria PIETRO A. YON

High Low NET .60

Veneziana PIETRO A. YON

High, A \flat Low, G \flat NET .60

J. FISCHER & BRO., NEW YORK

Fourth Avenue and Eighth Street (Astor Place)

When the accompaniment is to be played on the organ it is suggested that bars 3-6 and when the same passage occurs again be treated as follows:

Chimes

Sw.:
Vox Celeste,
Vox Humana
soft Flute 4'
& Trem.

16' Sw. to Ped.

etc.

Gesù Bambino

(The Infant Jesus)

1156045

FREDERICK G. MARTENS
Italian version by Pietro A. Yon

High

PIETRO A. YON

Andante mosso mf

Voice

Piano

p

When
Nel -

1156045 Pessagno Martens Yon

blos - soms flow - ered 'mid the snows Up - on a win - ter night Was
l'u - mi - le ca - pan - na Nel fred - do e po - ver - tà, È

born the Child the Christ-mas Rose The King of Love and Light The
na - to il san - to par - go - lo Che il mon - do a - do - re - rà. O -

rall. a tempo

f

rall. f a tempo

* In bars 3-6 and where passage is repeated the melody in the accompaniment may be played on chimes. The introduction may be treated in like manner.

an - gels sang, the shep - herds sang The grate - ful earth re - joiced
 san - na, o - san - na can - ta - no Con giu - bi - lan - te cor,

And at His bless - ed birth the stars Their ex - ul - ta - tion
 I tuoi pa - sto - ri ed an - ge - li O Re - di lu - ce a -

Non troppo lento

voiced. mor O come let us a -
 Ve - ni - te a - do -

sentito

pp

re - mus, Ve - ni - te ad - o - re - mus, Ve -
 dore Him, O come let us a - dore Him, O
 ria - mo, Ve - ni - te a - do - ria - mo, Ve -

ni - te ad - o - re - mus Do - mi - ni -
 come let us a - dore Him Christ the
 ni - te a - do - ria - mo Ge - su Re - den -

rall. *a tempo*

Lord. A -
 tor. Oh

num. *p*

Tempo I.

gain the heart with rap - ture glows To greet the ho - ly night That
 bel - bam - bin non pian - ge - re, Non pian - ger Re - den - tor, La

p

gave the world its Christ-mas Rose Its King of Love and Light _____ Let
mam - ma tu - a cul - lan - do - ti Ti ba - cia, o Sal - va - tor. _____ O -

rall. *f*
a tempo

ev - 'ry voice ex-claim His name The grate - ful cho - rus swell _____
san - na, o - san - na can - ta - no Con giu - bi - lan - te cor _____

p

From par - a - dise to earth He came That we with Him might
I tuoi pa - sto - ri ed an - ge - li O Re - di lu - ce a -

f

Non troppo lento

ppve *ni - te ad - o -*
dwel. mor. *O come let us a -*
Ve - ni - te a - do -

sentito
pp

re - mus , Ve - ni - te ad - o - re - mus , Ve -
dore Him, O come let us a - dore Him, O
ria - mo - Ve - ni - te a - do - ria - mo - Ve -

ni - te ad - o - re - mus Do - *rall.* *a tempo*
come let us a - dore Him Christ the
ni - te a - do - ria - mo Ge - sù Re - den -

rall. *a tempo*

Red. Red. Red. Red.

num. *p*
Lord. Ah!
ton. Ah!

Ve - ni - te ad - o - re - mus
 O come let us a - dore Him, Ah!
Ve - ni - te a - do - ria - mo Ah!

ad - o - re - mus Do - mi - num. *f* *Ve - ni - te,* *p*
 a - dore Him Christ the Lord. O come, O
Ge - sù - Re - den - tor *Ve - ni - te,* *ve -*

ni - te, *f* *ve - ni - te ad - o - re - mus,*
 come, O come let us a - dore Him,
ni - te, *ve - ni - te a - do - ria - mo*

Opp. *pp* *ad - o - re - mus* *rall.* *a tempo* *Do - mi - num.*
 let us a - dore Him Christ the Lord.
 a - do - ria - mo *Ge - sù - Re - den - tor.*

SONGS OF MERIT

Dunn, James P.

Bitterness of Love, The	- - - .60
<i>C# min., Bb min., G min.</i>	
Come unto Him.	<i>F, Db</i> - - - .50
Heart to Heart.	<i>Ab</i> - - - .40
Jean.	<i>F, D</i> - - - .50
Serenade.	<i>Ab, Eb</i> - - - .60
Till I Wake.	<i>A, Eb</i> - - - .50
To Helen.	<i>Eb, Bb</i> - - - .60
Weary.	<i>Eb</i> - - - .50
White Rose, A.	<i>A, Eb</i> - - - .60
Under the Greenwood Tree.	<i>Eb, C</i> .60

Ferrata, G.

Eagle, An.	<i>Bass, E</i> - - - .50
Groping.	<i>Alto, D min.</i> - - - .60
Hope.	<i>Alto, Bb min.</i> - - - .40
In the City I Command.	<i>Bass, Eb min.</i> .50
Learned.	<i>Bass, C min.</i> .50
Night and the Curtains Drawn.	<i>Eb, Db</i> .60
Serpent.	<i>Bass, G min.</i> - - - .60
Song of Thanksgiving, A.	<i>Db, Bb</i> .60
Wave, A.	<i>Sopr., Db</i> - - - .60

Foster, Fay

Honorable Chop-Sticks, The.	<i>F, D*</i> .50
Shadow of the Bamboo Fence, The	.50
Cruel Mother-in-Law, The.	<i>D, A</i> .75

Goode, Blanche

When I am Dead.	<i>C min., A min.</i> - .50
Tryst.	<i>A min., F min.</i> - - - .50

Hamblen, Bernard

Remembrance.	<i>G, Eb</i> - - - .50
--------------	------------------------

Hartmann, Dr. P.

Kismet.	<i>F min.</i> - - - .30
Lullaby.	<i>F</i> - - - .40
Question.	<i>Eb</i> - - - .40
Spring Song.	<i>E</i> - - - .50

Knox, Gertrude Leverich

Rockin' Time.	<i>F</i> - - - .50
---------------	--------------------

Kramer, A. Walter

Christmas Carol, A.	<i>F</i> - - - .50
Eternal May.	<i>A, F</i> - - - .60
For a Dream's Sake.	<i>G min., Eb min.</i> .50
Joy.	<i>A, F</i> - - - .50
Of the Robin and the Master	- - - .50
<i>Ab, F, Eb</i>	
There is a Garden.	<i>E, D, C</i> - - - .60

Miniello, Mario

Neapolitan Serenade.	<i>D</i> - - - .50
----------------------	--------------------

Rhys-Herbert, W.

Donald.	<i>Eb, Bb</i> - - - .60
Forever Love, Forever.	<i>Eb, Bb</i> - - - .40
For the Sake O' Somebody	- - - .50
<i>G min., D min.</i>	
For Your Dear Eyes.	<i>C, G</i> - - - .50
If I were not I, Love.	<i>Eb</i> - - - .40
In a Garden.	<i>Ab, Eb</i> - - - .50
In the Forest Fair.	<i>E, C</i> - - - .60
Joy of Life.	<i>Ab, Eb</i> - - - .40
Love's Paradise.	<i>F, D</i> - - - .50
O Love Sweetheart.	<i>Ab, Eb</i> - - - .50
Thine.	<i>Ab, F, Eb</i> - - - .60
Though Love be Blind.	<i>Gb, Eb</i> - - - .40

Schminke, Oscar E.

Million Little Diamonds, A.	<i>Bb, Ab</i> .50
Paradise Fancies.	<i>Db</i> - - - .75
Thistle-Down.	<i>E</i> - - - .50
Wee Little Flowret.	<i>F, Db</i> - - - .50

Shaw, Alice M.

May Noon.	<i>D</i> - - - .50
One April Day.	<i>Bb</i> - - - .50
Pussy Willows.	<i>F, D</i> - - - .50
To Go and Forget.	<i>A, F</i> - - - .50
Waiting.	<i>B min., A min.</i> - - - .50

Silver, Alfred J.

Baby, Baby, Hush-a-bye.	<i>A</i> - - - .60
Garden Song, A.	<i>D</i> - - - .60
Gifts.	<i>Bar. D</i> - - - .50
Spurs and a Song.	<i>Bar. F</i> - - - .50

Steffen, Elmer Andrew

Two Loves.	<i>Gb, Db</i> - - - .50
------------	-------------------------

Stewart, H. J.

Best of All.	<i>G, Eb</i> - - - .50
He Kissed Her.	<i>Bb, G</i> - - - .50
Indian Love Song.	<i>Ab, F</i> - - - .50

Strickland, Lily

Today is Fair.	<i>G, Eb</i> - - - .60
----------------	------------------------

Taylor, Deems

Plantation Love Song ('My Rose')	<i>F, A</i> .50
----------------------------------	-----------------



J. FISCHER & BRO.

NEW YORK

7, 8, 10 & 11, BIBLE HOUSE (ASTOR PLACE)