

148637

# BECAUSE OF YOU

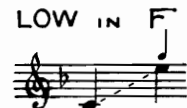
A LOVE BALLAD

WITH PIANO ACCOMPANIMENT



*By*

R. HUNTINGTON WOODMAN



PRICE, 60 CENTS NET

M

1671

Worth

G. SCHIRMER

NEW YORK: 3 EAST 43<sup>rd</sup> STREET LONDON, W.: 18, BERNERS STREET  
BOSTON: THE BOSTON MUSIC CO.



T

6



# Because of You

Harold Flammer

R. Huntington Woodman

Andante

Voice

Piano

*mf*

*p*

When

first I gazed on you, my love, I saw be-neath your wondrous

hair Such joy in your up-lift-ed face, It caught my

*cresc.*

*cresc.*

*cresc.* eye and held it there. *p* When first I held you in my

*cresc.* arms And kissed your lowered brow di - vine, *f* I

*cresc.*

knew that there could never be A sacred love as pure as thine. *mf*

*mf*

When first your soul its depth re-vealed And

*mf*

*cresc.*

home a deep-er rev-rence knew, No sac - ri - fice was e'er too

*cresc.*

*f*

great, I would not make, my love, for you. When

*mf*

148637

first mis-for-tune numbed my soul And sor - row dimmed life's golden

*mf*

Detailed description: This system contains the first two lines of the musical score. The top staff is a vocal line in treble clef with a key signature of two sharps (F# and C#). The lyrics are "first mis-for-tune numbed my soul And sor - row dimmed life's golden". The piano accompaniment is in a grand staff (treble and bass clefs). The piano part begins with a dynamic marking of *mf* (mezzo-forte). The music consists of eighth and sixteenth notes in the vocal line and chords and moving lines in the piano accompaniment.

hue, Your love gave strength un-to my heart. I lived a -

*cresc.* *f*

*cresc.* *f*

Detailed description: This system contains the second and third lines of the musical score. The vocal line continues with the lyrics "hue, Your love gave strength un-to my heart. I lived a -". The piano accompaniment features a *cresc.* (crescendo) marking in both staves. The dynamic *f* (forte) is indicated in both the vocal and piano parts. The piano accompaniment includes a prominent chordal texture in the right hand.

new be - cause — of you.

*ff* *dim.* *p*

Detailed description: This system contains the final line of the musical score. The vocal line concludes with the lyrics "new be - cause — of you." The piano accompaniment features a *ff* (fortissimo) dynamic marking, followed by a *dim.* (diminuendo) marking, and ends with a *p* (piano) dynamic marking. The piano part includes a triplet in the bass line and a final chord in the right hand.



# SONGS *by* C. WHITNEY COOMBS

## Patria

Very slow, with profound feeling (♩ = 45)

Voice: There's a sound in our ears... of

Piano: *pp* both pedals

sob-bing, When the vi - ols pause in their song; And we hear... a cry as the

winds go by, Tho' we may not lis - ten long;

Copyright, 1917, by G. Schirmer

## Recent songs

	<i>net</i>
<b>A benediction</b>	50
Medium, G	
<b>A riot of roses</b>	60
High, C. Medium, B♭. Low, G	
<b>By the rosy cliffs of Devon</b>	60
High, E♭. Medium, D♭. Low, B♭	
<b>Patria</b>	60
Medium, F	
<b>The breath of the dawn</b>	75
High, D♭. Medium, B♭	
<b>The dew is on the clover</b>	60
High, G. Medium, F. Low, E♭	
<b>The hills of Arcady</b>	60
High, A♭. Low, F	
<b>Thy face</b> Medium, D♭	60

## Recent sacred songs

### Easter songs

**As it began to dawn** *net*  
60

With organ or piano accompaniment  
High, G. Medium, F. Low E♭

**The Conqueror** 60

With violin obligato and piano accompaniment. High, F. Medium, E♭. Low, D♭

### Christmas song

**Star of the East** 60

With violin obligato. High, E♭. Medium, C

## The Dew is on the Clover

Allegretto, with rhythmic movement (♩ = 125) *rit.* *a tempo*

Voice: Tho' The

Piano: *mf* *rit.* *a tempo*

dew is on the clo - ver that the bees are hum - ming o ver, And

*rall.* *piu rit.* *p*

clear a - cross the si - lence blows the rob - ins pi - ping cry; And

*rall.* *piu rit.*

Copyright, 1916, by G. Schirmer