

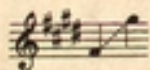
The NIGHTINGALE
has a LYRE *of* GOLD

Poem by W. E. HENLEY

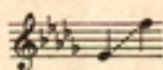
Music by

BENJAMIN WHELPLEY

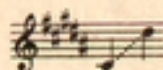
—High in E



Medium in D \flat



Low in B

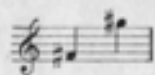


Price, 40 cents
(In U. S. A.)

The Boston Music Company
BOSTON, MASS.



The nightingale has a lyre of gold.



Wm. E. Henley.
(Used by permission)

Benjamin Whelpley.

Animato. (♩ = 80) *mf a tempo*

Voice. The night-in-gale has a lyre of

Piano. *f* *rit.* *a tempo*

gold, _____ The lark's _____ is a clar-i - on call, _____ And the

cresc. *p*

black - bird plays but a box - wood flute, _____

p

Copyright, 1903, by G. Schirmer Jr.

Printed in U. S. A.

For all countries.

mf but I love him best of all.

mf For his

pp *mf*

song is all of the joy of life, and

f we in the mad spring weath - er, *p* We

cresc.

two have list - - ened till he sang, ——— Our

cresc.

mf

hearts ——— and lips to - geth - er,

mf

frit.

our hearts and lips to - geth - - -

frit. *or. a tempo*

rit.

rit.