

SONATA in Si \flat maggiore

per Violino e Basso continuo

F. XIII n° 43

a cura di
Gian Francesco Malipiero

Antonio Vivaldi
(1678 - 1741)

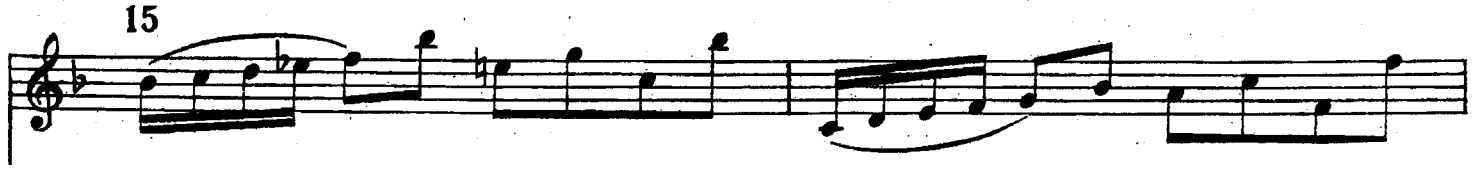
Preludio

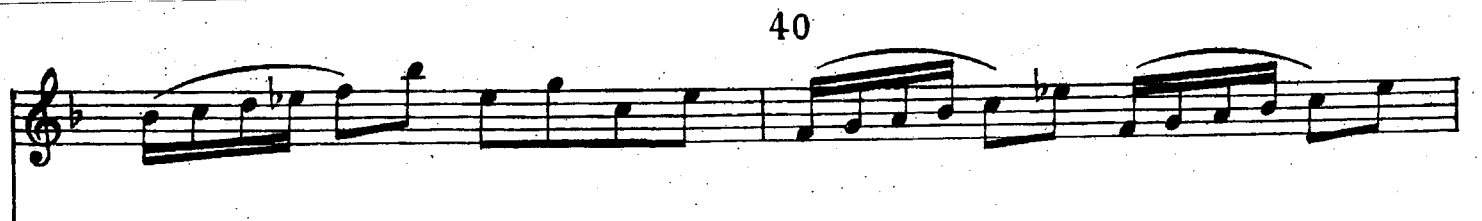
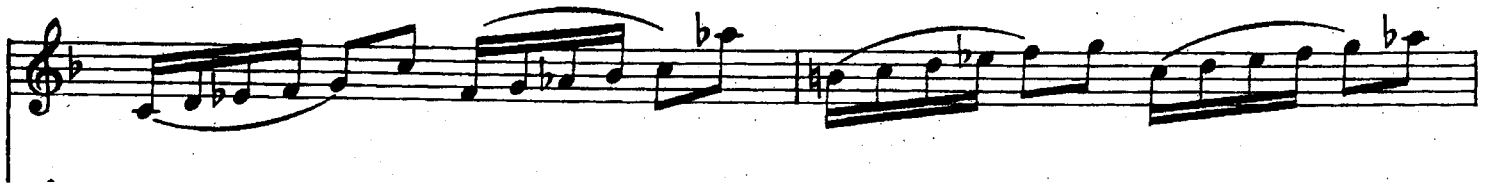
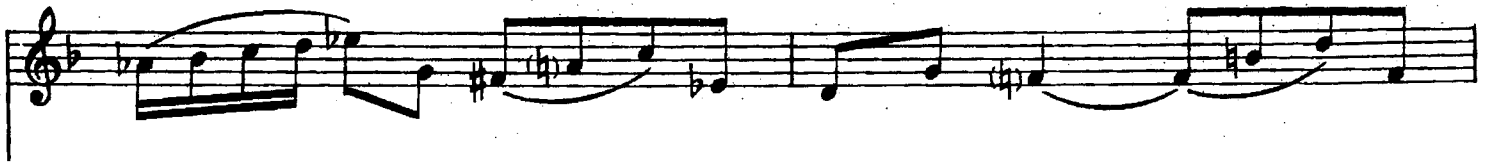
Largo

Violino

Allemanda

Allegro





Corrente

Allegro

45

(mf)

50

55

tr

60

(f)

65



70



75



80



Gavotta

85 **Presto**

90



95



100



105



110



115



