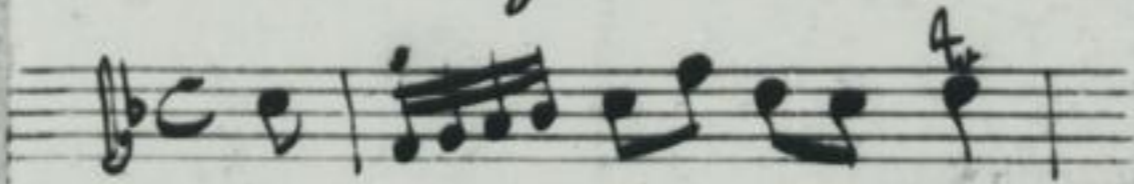


Schreiner No: II.  
27. Fach 32. Lage.

No: 14.) Solo.

Violino e Basso.

Del Sig. Vivaldi.



MA. 2225

*Andante* *14.* *Adagio a Solo* *W. Liszt* *Del Violon*  
*Violon*

*ms 2225*

A page of handwritten musical notation on ten staves. The notation is dense and complex, featuring various note values, rests, and articulation marks. The staves are connected by a continuous line on the left side. The handwriting is in black ink on aged paper. The music appears to be a single melodic line with some accompaniment, possibly for a violin or flute. The notation includes many sixteenth and thirty-second notes, as well as some longer note values. There are also some markings that look like 'tr' (trills) and 'acc' (accents).

A page of handwritten musical notation on ten staves. The notation is dense and includes various musical symbols such as clefs, notes, rests, and beams. There are several instances of heavy scribbling or crossing out of notes, particularly in the upper staves. The handwriting is in black ink on aged paper. The staves are connected by a large bracket on the left side.

A page of handwritten musical notation on ten staves. The notation is dense and complex, featuring various note values, rests, and clefs. The first staff begins with a treble clef and a common time signature (C). The notation is written in a cursive, historical style. There are several measures of music, some with repeat signs and some with fermatas. The handwriting is dark ink on aged paper.

A page of handwritten musical notation on ten staves. The notation is dense and includes many crossed-out passages, suggesting a draft or a complex piece. The staves are arranged in two systems of five staves each. The notation includes various note values, rests, and some clefs. A circular stamp is visible on the fifth staff of the second system, containing the text "ES MUSEUM" and "DRESDEN".

Handwritten musical score on a page with ten staves. The notation is dense and complex, featuring many overlapping notes and stems, particularly in the upper staves. The lower staves show a transition to a more rhythmic, dotted-note pattern. The bottom half of the page contains several empty staves and a large, stylized handwritten flourish or signature.

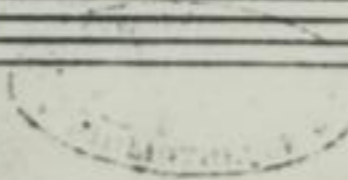
Handwritten musical score on a page with ten staves. The top six staves contain musical notation, including notes, rests, and dynamic markings like 'f' and 'ff'. The bottom four staves are empty. A circular library stamp is visible on the fifth staff.



A page of handwritten musical notation on ten staves. The notation is dense and complex, featuring many beamed notes, slurs, and dynamic markings. The first staff begins with a treble clef and a common time signature (C). The music is written in a cursive, handwritten style. There are several instances of the letter 'b.' (possibly indicating a flat or a specific measure) and the number '3' (possibly indicating a triplet). The notation is somewhat messy, with some ink bleed-through and overlapping notes. The staves are connected by a single vertical line on the left side.

A page of handwritten musical notation on ten staves. The notation is dense and complex, with many notes and rests. A circular stamp is visible on the third staff, containing the text "WALHERRE". The paper shows signs of age and wear.

A page of handwritten musical notation on aged, yellowed paper. The score consists of approximately 12 staves, organized into three systems of four staves each. The notation is dense and complex, featuring many beamed notes, slurs, and some areas of heavy scribbling or correction. The ink is dark, and the paper shows signs of age and wear. The notation appears to be for a multi-instrument or multi-voice piece, possibly a string quartet or a similar ensemble. The handwriting is fluid and characteristic of a composer's sketch or a working draft.



*Handwritten signature or initials in the bottom right corner of the page.*