

TWV - 30 - 26

FUGA N°1

TRANSCRIPCIÓN: LUIS ALVAREZ

TELEMANN
(1681-1767)

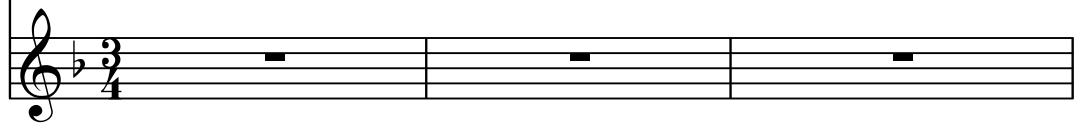
♩ = 120

Guitarra 1

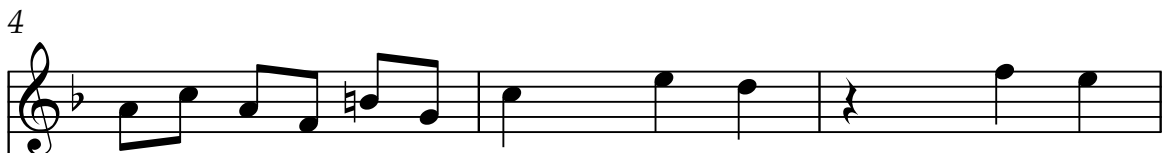


♩ = 120

Guitarra 2



Guit.1



Guit.2



Guit.1



Guit.2



38

Guit.1

Guit.2

41

Guit.1

Guit.2

44

Guit.1

Guit.2

47

Guit.1

Guit.2