

# TWV - 30 - 24

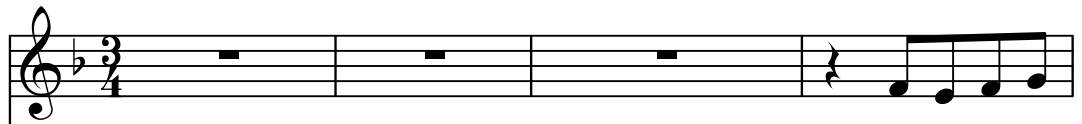
## FUGA N°1

TRANSCRIPCIÓN: LUIS ALVAREZ

TELEMANN  
(1681-1767)

♩ = 130

Guitarra 1



♩ = 130

Guitarra 2



5

Guit.1

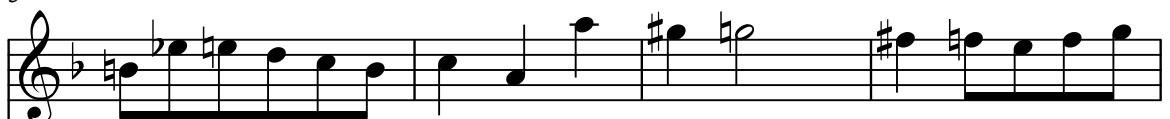


Guit.2

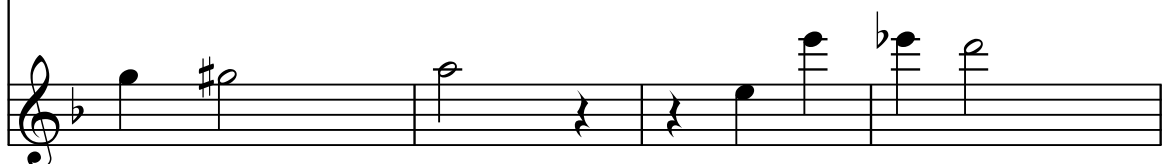


9

Guit.1



Guit.2



13

**Guit.1**

**Guit.2**

17

**Guit.1**

**Guit.2**

21

**Guit.1**

**Guit.2**

25

**Guit.1**

**Guit.2**

29 *trum*

**Guit.1**

**Guit.2**

33

**Guit.1**

**Guit.2**

37

**Guit.1**

**Guit.2**

41

**Guit.1**

**Guit.2**

45

**Guit.1**

**Guit.2**

48

**Guit.1**

**Guit.2**

51

**Guit.1**

**Guit.2**

54

**Guit.1**

**Guit.2**

57

**Guit.1**

**Guit.2**

60

**Guit.1**

**Guit.2**

63

**Guit.1**

**Guit.2**

66

**Guit.1**

**Guit.2**