

OPUS - 6

DOCE ESTUDIOS

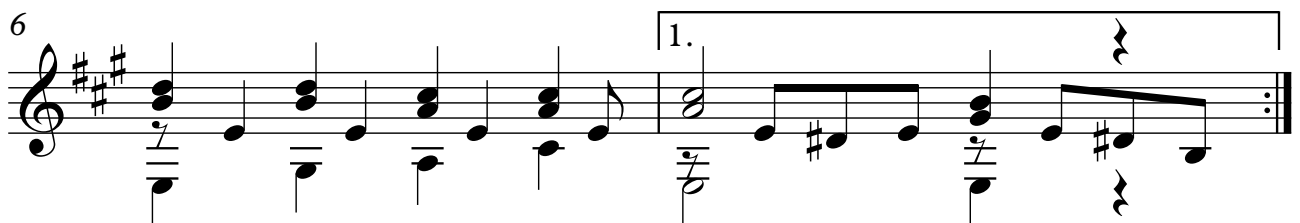
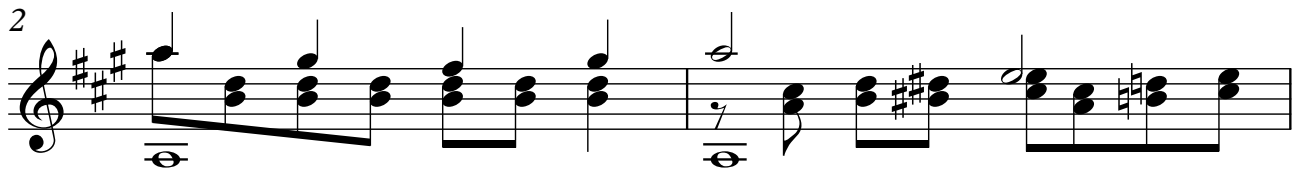
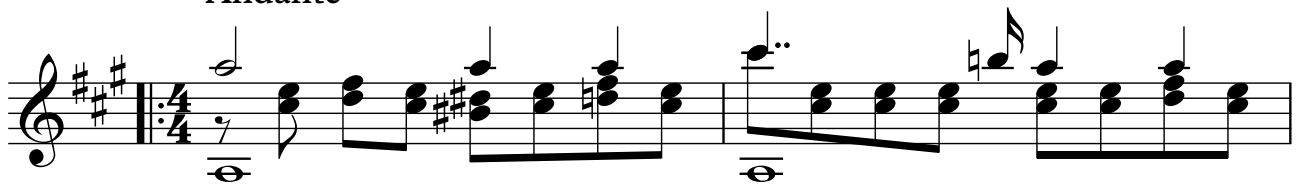
Estudio n°12

ARMONIZADO: LUIS ALVAREZ

FERNANDO SOR

♩ = 100

Andante



2

8

2.

10

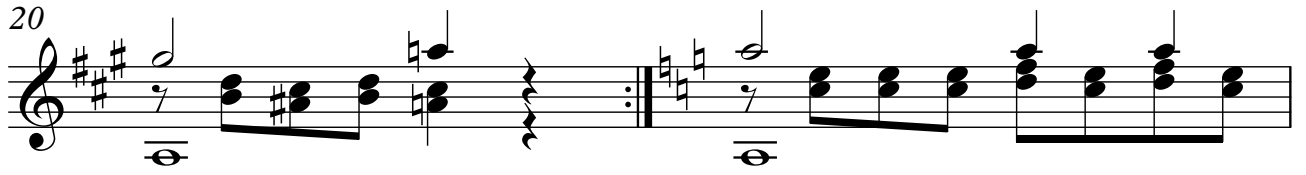
12

14

16

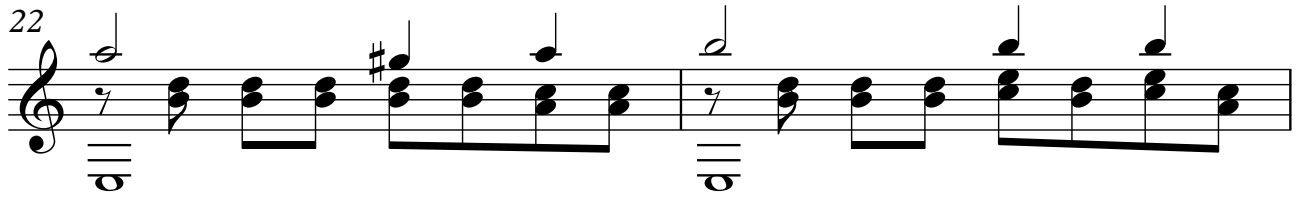
18

20



Musical notation for measure 20, featuring a treble clef, a key signature of two sharps (F# and C#), and a common time signature. The notation includes a whole note chord, a half note chord, and a quarter note chord, followed by a repeat sign and a quarter note chord.

22



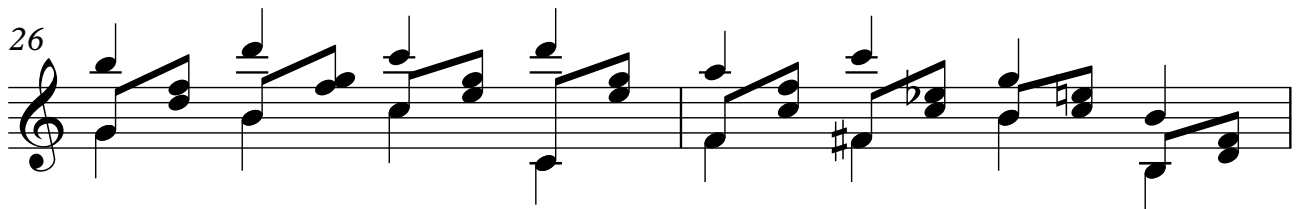
Musical notation for measure 22, featuring a treble clef, a key signature of two sharps, and a common time signature. The notation includes a quarter note chord, a half note chord, and a quarter note chord, followed by a quarter note chord and a quarter note chord.

24



Musical notation for measure 24, featuring a treble clef, a key signature of two sharps, and a common time signature. The notation includes a quarter note chord, a half note chord, and a quarter note chord, followed by a quarter note chord and a quarter note chord.

26



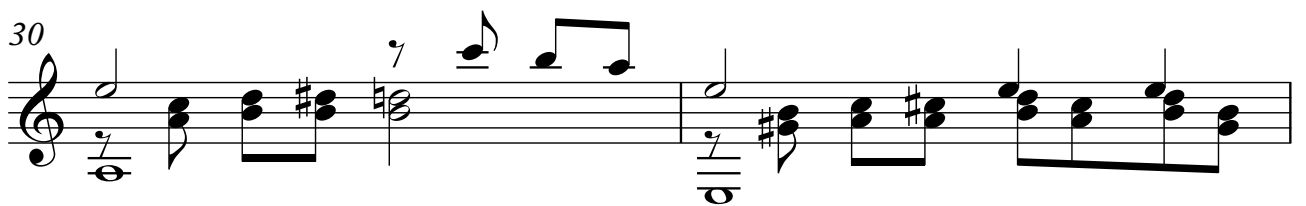
Musical notation for measure 26, featuring a treble clef, a key signature of two sharps, and a common time signature. The notation includes a quarter note chord, a half note chord, and a quarter note chord, followed by a quarter note chord and a quarter note chord.

28



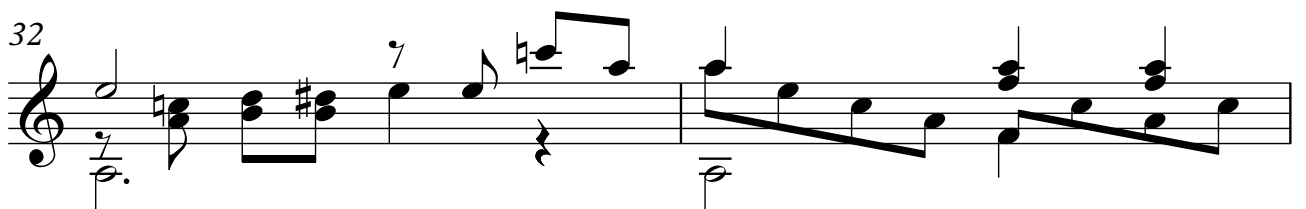
Musical notation for measure 28, featuring a treble clef, a key signature of two sharps, and a common time signature. The notation includes a quarter note chord, a half note chord, and a quarter note chord, followed by a quarter note chord and a quarter note chord.

30



Musical notation for measure 30, featuring a treble clef, a key signature of two sharps, and a common time signature. The notation includes a quarter note chord, a half note chord, and a quarter note chord, followed by a quarter note chord and a quarter note chord.

32



Musical notation for measure 32, featuring a treble clef, a key signature of two sharps, and a common time signature. The notation includes a quarter note chord, a half note chord, and a quarter note chord, followed by a quarter note chord and a quarter note chord.

34

36

38

40

42

44

46

48

1. 2.

50

52

54

56

58

60