

OPUS -53

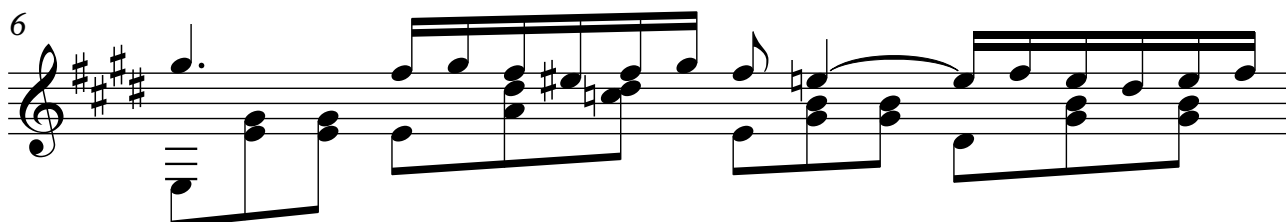
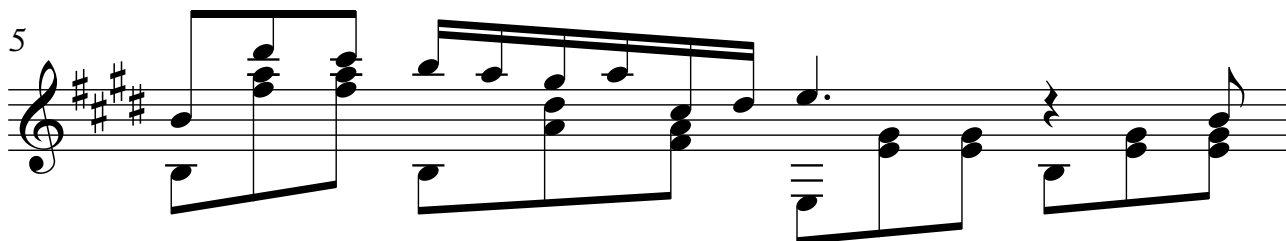
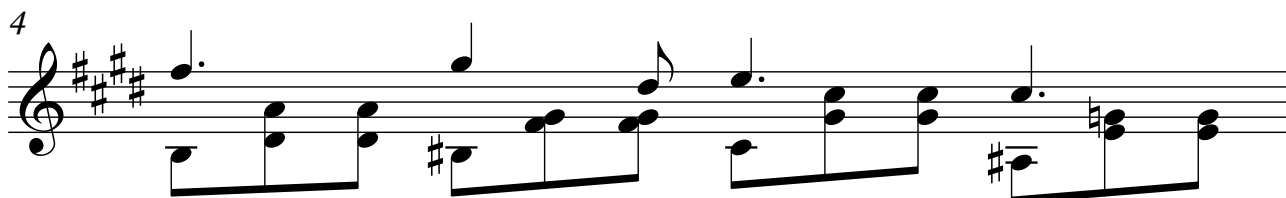
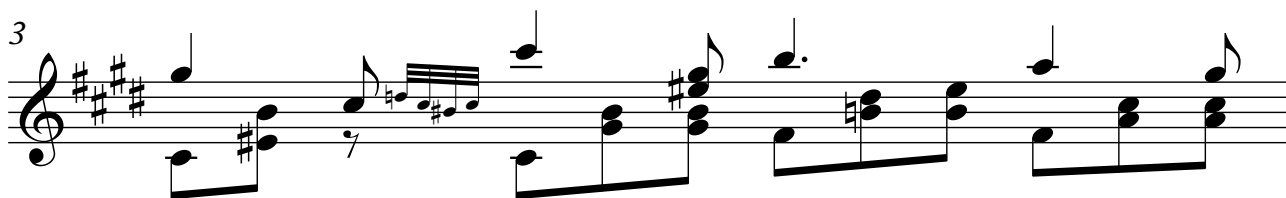
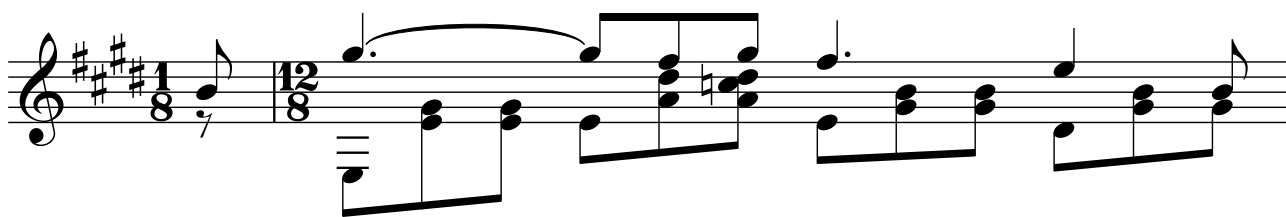
NOCTURNO N°2 CHOPIN

TRANSCRIPCIÓN: LUIS ALVAREZ

JULIO SAGRERAS

(1879-1942)

♩=132



2

7

8

9

10

12

13

14

15

16

tr

17


18

20

21

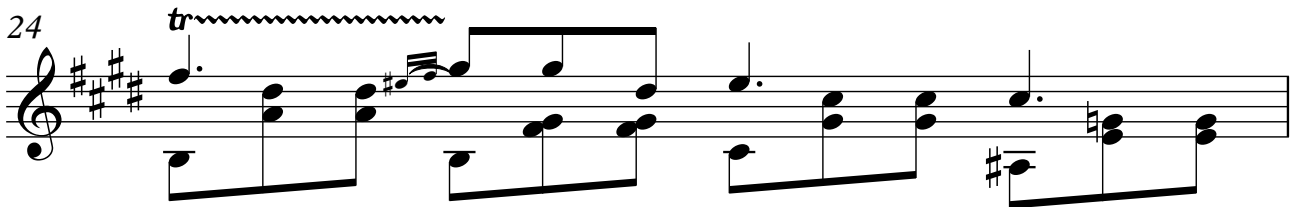
22

23



Musical notation for measure 23, featuring a treble clef, a key signature of three sharps (F#, C#, G#), and a 4/5 time signature. The melody consists of eighth and quarter notes, while the bass line features a complex pattern of chords and rests.

24



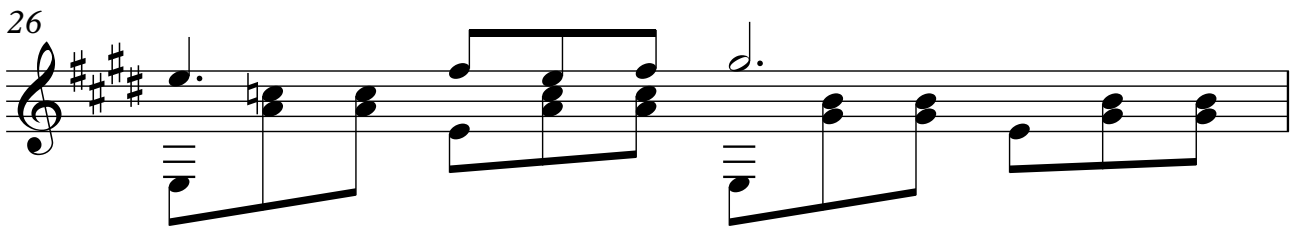
Musical notation for measure 24, featuring a treble clef, a key signature of three sharps (F#, C#, G#), and a 4/5 time signature. The melody includes a trill (tr) over a dotted quarter note, followed by eighth and quarter notes. The bass line consists of chords and eighth notes.

25



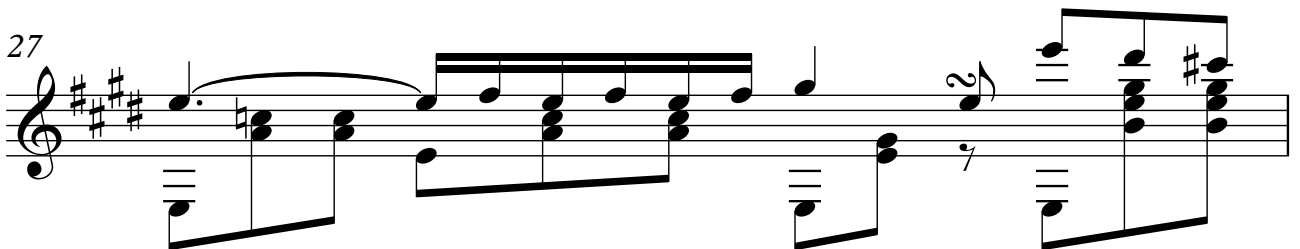
Musical notation for measure 25, featuring a treble clef, a key signature of three sharps (F#, C#, G#), and a 4/5 time signature. The melody includes a triplet of eighth notes and a dotted quarter note. The bass line features chords and eighth notes.

26



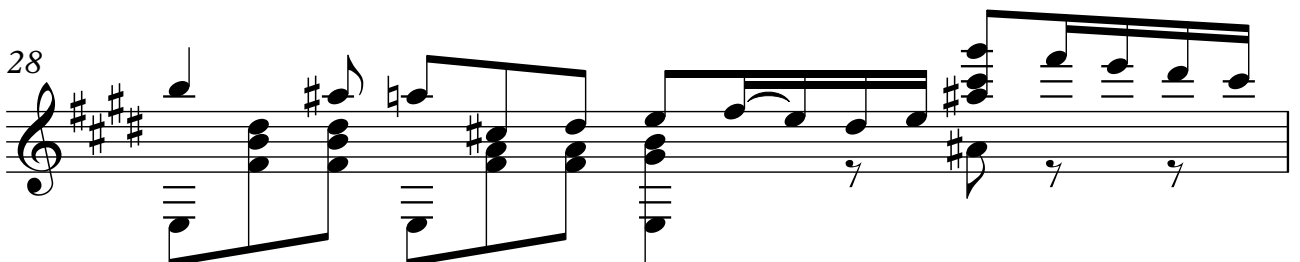
Musical notation for measure 26, featuring a treble clef, a key signature of three sharps (F#, C#, G#), and a 4/5 time signature. The melody consists of a dotted quarter note followed by eighth and quarter notes. The bass line features chords and eighth notes.

27



Musical notation for measure 27, featuring a treble clef, a key signature of three sharps (F#, C#, G#), and a 4/5 time signature. The melody includes a slur over eighth notes and a quarter note. The bass line features chords and eighth notes.

28



Musical notation for measure 28, featuring a treble clef, a key signature of three sharps (F#, C#, G#), and a 4/5 time signature. The melody consists of eighth and quarter notes. The bass line features chords and eighth notes.

29 5

31

32

accel.

34

$\text{♩} = 100$

35

$\text{♩} = 140$

36