

N^o 142.

QUINTUOR

concertant

pour 2 Violon 2 Alto et Violoncelle

par

AL: ROLLA

à Vienne chez Louis Maisch

N^o 356

Ex. n^o. C. Enhev.

Sinfonia. *Maestoso Sostento* Violino I.

First staff of music, starting with a dynamic marking of *f* and a *molto* marking.

Second staff of music, starting with a dynamic marking of *f* and a tempo change to *Allegro*. Includes the instruction *Sotto voce assai*.

Third staff of music, featuring dynamic markings of *ff*, *p*, *f*, *p*, and *f*.

Fourth staff of music, including a trill (*tr*) and a dynamic marking of *f*.

Fifth staff of music, featuring a trill (*tr*) and a dynamic marking of *f*.

Sixth staff of music, featuring a trill (*tr*) and a dynamic marking of *f*.

Seventh staff of music, featuring a trill (*tr*) and a dynamic marking of *f*.

Eighth staff of music, featuring a trill (*tr*) and a dynamic marking of *f*.

Ninth staff of music, featuring a trill (*tr*) and a dynamic marking of *f*.

Tenth staff of music, including the instruction *Sotto voce assai*.

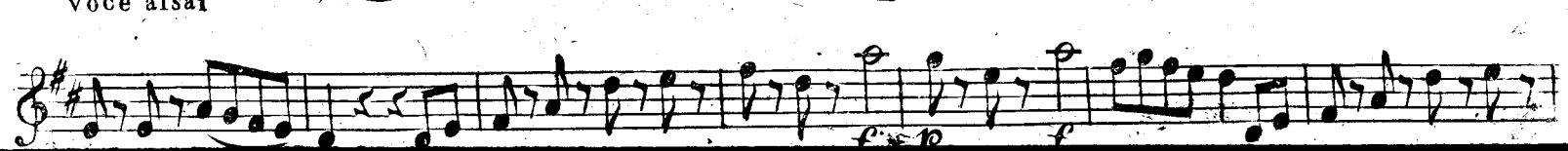
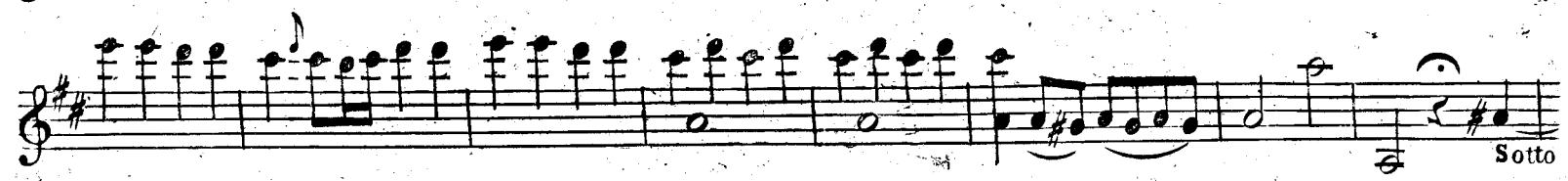
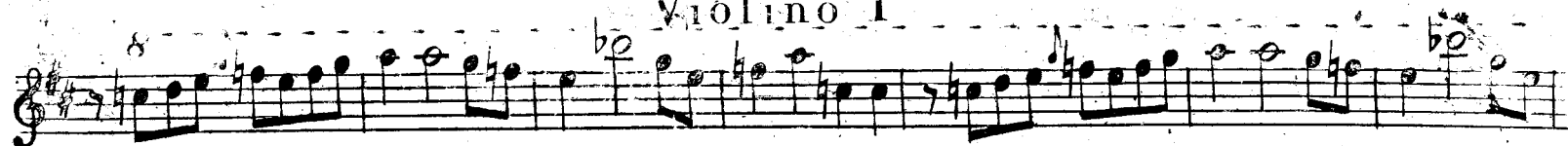
Eleventh staff of music, featuring dynamic markings of *f*, *p*, *f*, and *p*.

Twelfth staff of music, featuring dynamic markings of *f*, *p*, *f*, and *p*.

Thirteenth staff of music, ending with a dynamic marking of *f*.

Violino I.

Violino I



Violino I.

A musical score for Violino I, consisting of 12 staves of music. The score is written in treble clef with a key signature of one sharp (F#) and a common time signature (C). The music features a variety of rhythmic patterns, including eighth and sixteenth notes, and rests. Dynamic markings such as *f* (forte), *p* (piano), and *fp* (fortissimo) are used throughout. The score concludes with a double bar line and repeat dots.