

Compensation

Song

by
ELSIE G. PHELAN

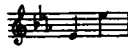
④

THE JOHN CHURCH COMPANY
CINCINNATI, CHICAGO, NEW YORK,
LEIPSIK, LONDON.

Dedicated to my cousin *Murion Brewster Gibbs.*

3

Compensation.



Leland's Anglo-Romany Songs.

ELSIE G. PHELAN.

Vivace.

mp

If I were your lit - tle ba - by, If

you were my moth - er old, You would give me a kiss, my

Copyright, MCMV, by The John Church Company. International Copyright.
Entered according to act of the Parliament of Canada in the year MCMV,
by The John Church Company in the Department of Agriculture.

dar - - ling, — "Oh, Sir, you are far too

mf

mf

dim.
bold." But as

p

mf
you — are not my moth - er, But as I — am not your

mf

son, ——— “Ah! ——— that is an - oth - er

This system contains a vocal line and piano accompaniment. The vocal line is in a treble clef with a key signature of two flats and a 4/4 time signature. It features a melodic line with a fermata over the word "Ah!". The piano accompaniment is in a grand staff (treble and bass clefs) with a key signature of two flats and a 4/4 time signature. It consists of block chords in the right hand and a bass line in the left hand. Dynamics include *f* and *mf*.

mat - ter; — So may - be, I'll give you one?"

This system continues the vocal line and piano accompaniment. The vocal line has a fermata over the word "one?". The piano accompaniment continues with block chords and a bass line. Dynamics include *mf*.

dim. *pp* *pp*

This system concludes the vocal line and piano accompaniment. The vocal line has a long fermata. The piano accompaniment features a *dim.* dynamic marking in the right hand and *pp* markings in the right and left hands. The system ends with a double bar line.