

à Madame C. DUBOIS née O'MEARA.

VALSE-RÊVEUSE

pour

PIANO

PAR

Georges PFEIFFER

Op. 57. N° 2.

Prix: 6^{fr}

PARIS

G. HARTMANN, Éditeur, 19, Boulev. de la Madeleine.

(Propriété, p^{re} tous pays.)

(Imp. Mouton, Paris.)

May be for 1904 and 1905.

à Madame C. DUBOIS née O'MÉARA.

VALSE-RÊVEUSE

POUR
PIANO

PAR

Georges PFEIFFER

Op. 57, N°2

Prix: 6^f

PARIS
G. HARTMANN, Editeur, 19, Boulev. de la Madeleine.
(Propriété p^r tous pays)

Imp. : M. Michel, Paris.

G. HARTMANN
L'OPÉRA-BOISQUE
19, Boulev. de la Madeleine

à Madame C. DUBOIS née O' MEARA.

1

VALE - RÊVEUSE

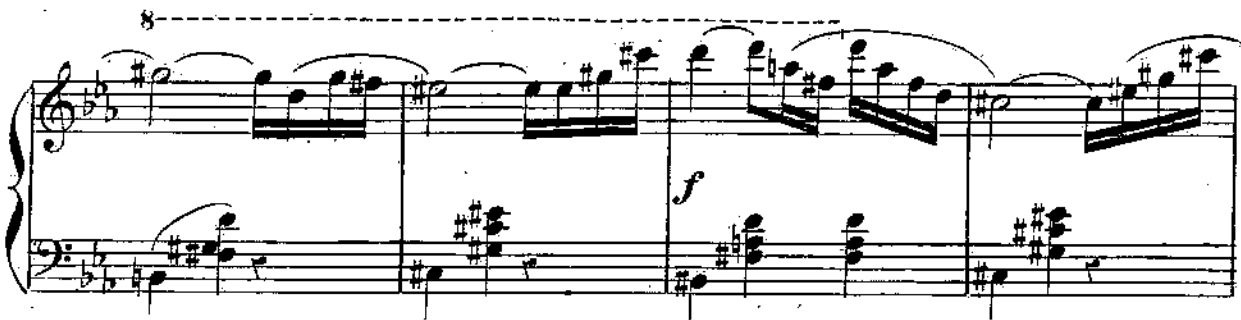
OP. 57 - NO 2.

GEORGES PFEIFFER.



Moderato.

PIANO.



Tempo 1^o.

p subito.

Crēs - cen - do.

Rallentando.

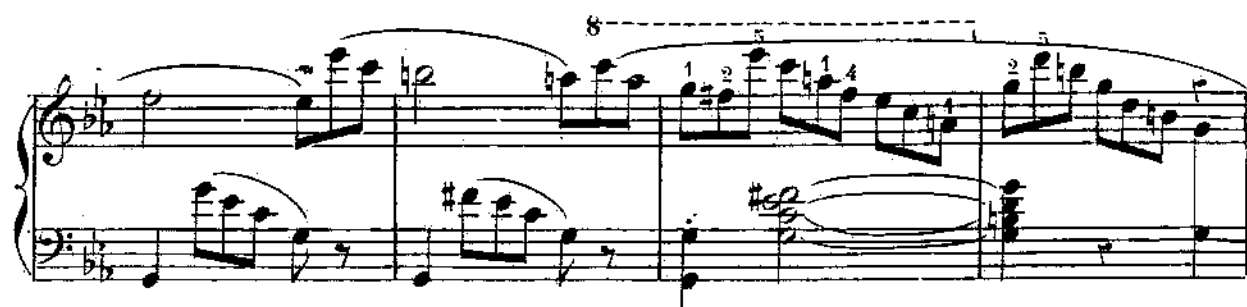
p

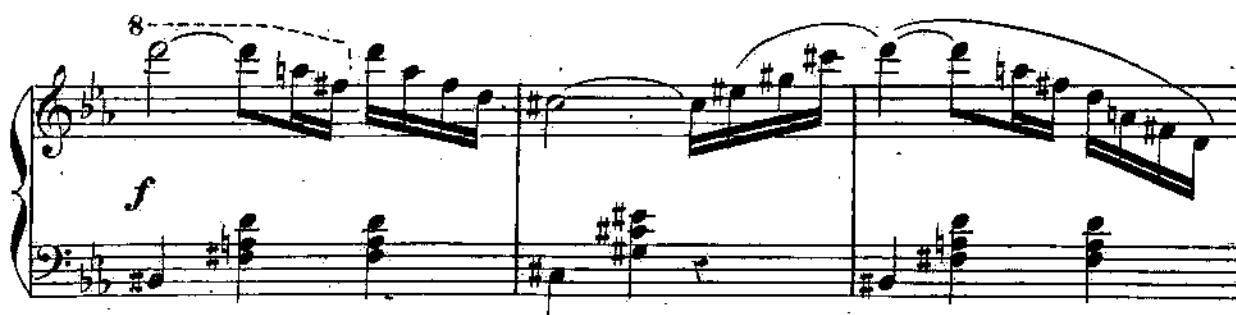
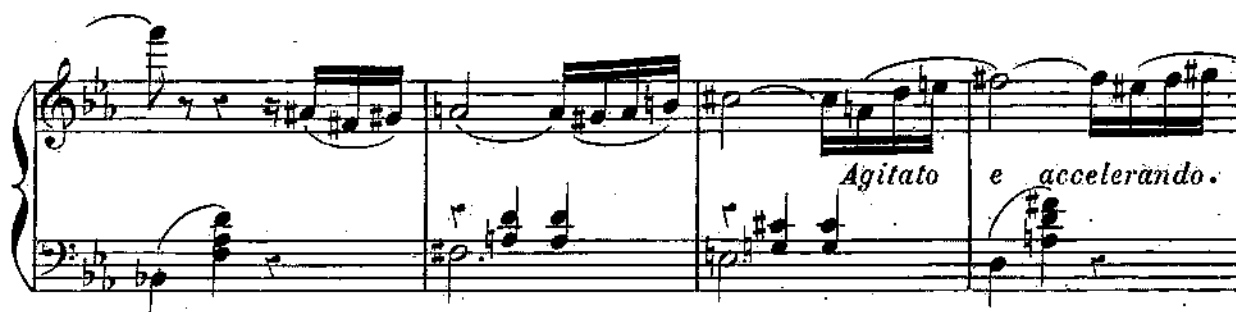
Riten. pp

Animato.

mf

The image displays a page of musical notation, likely for a piano piece, consisting of six systems of staves. The notation is written in a key signature of two flats (B-flat and E-flat) and a 4/4 time signature. The first system begins with a forte (*f*) dynamic marking. The second system includes a mezzo-forte (*mf*) marking and features fingering numbers (1, 3, 2, 1) above the right-hand staff. The third system returns to a forte (*f*) dynamic. The fourth system is marked *agitato.* and *mf*. The fifth system includes a fortissimo (*ff*) marking and features a sequence of fingering numbers (8, 1, 2, 5, 1, 4, 2) above the right-hand staff. The sixth system continues the musical piece without specific dynamic markings. The notation includes various musical symbols such as notes, rests, slurs, and dynamic markings.





Tempo I.^o 7

sempre f e agitato.

pp subito.

Calmato.

Ri - te - nu - to

Un poco più lento.

a Tempo.

mf pp

Rallentando.

pp delicato.

ff vivace.