

Quartetto 14.º

Per Violino, Viola, Chitarra, e Violoncello

Pressamente Composto, e Dedicato

Al suo Amico Il sig.º Avvocato

Luigi Guglielmo Fermi

Da Niccolò Paganini

~~Di~~

Chitarra

*All.<sup>o</sup> Maestoso*

*Dolce*

*Dol.*

*un poco ad libitò*

*pp. + ritard.*

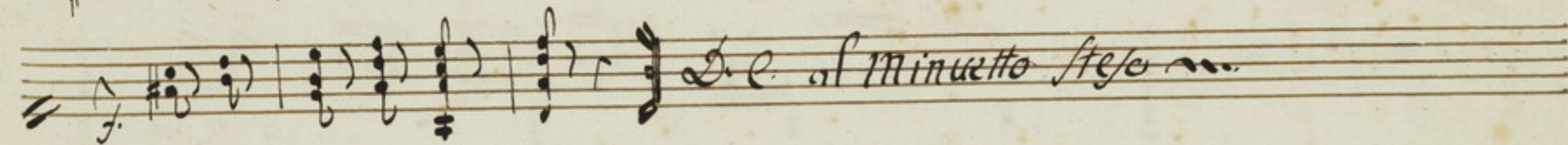
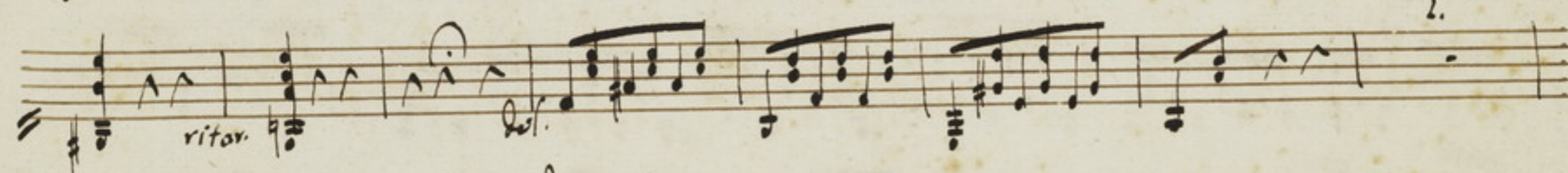
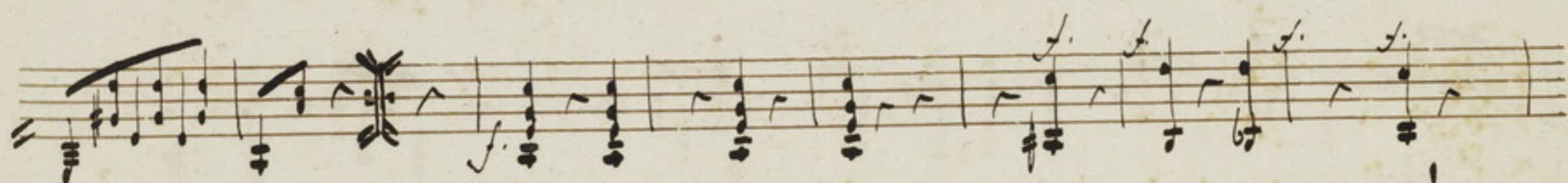
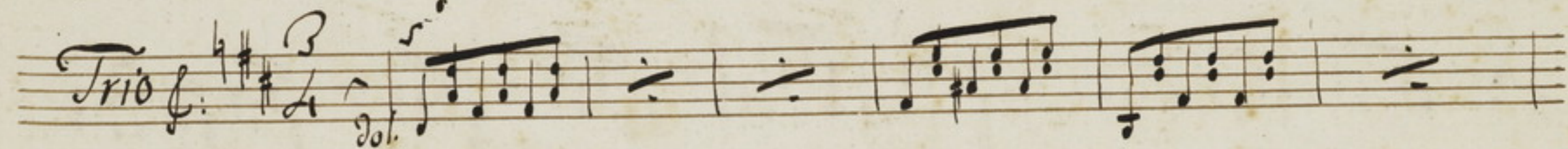
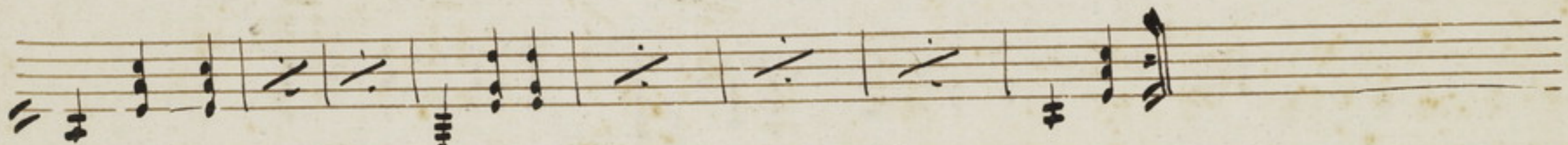
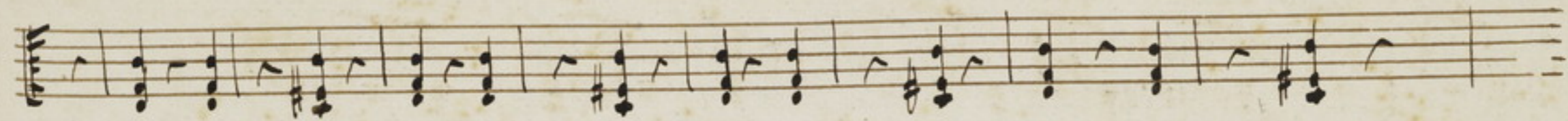
*v.f. ritard.*

*v.f. ritard.*

Handwritten musical score on eight staves. The notation includes various musical symbols such as notes, rests, and dynamic markings. The score is organized into two systems of four staves each. The first system includes the markings "1: *For*" and "2: *For*". The second system includes the marking "5". The third system includes the marking "p. 6 7". The fourth system includes the marking "12". The fifth system includes the marking "v.". The sixth system includes the marking "f.". The seventh system includes the marking "p.". The eighth system includes the marking "U.S.". The notation is dense and complex, featuring many slurs and ties.

*un poco ad libitum*

*Minuetto Scherzo*



D. e. al Minuetto Stejo ~





*Finale*

*All. vivace*

A handwritten musical score for a finale, consisting of eight staves. The music is written in a treble clef with a key signature of one sharp (F#) and a 3/4 time signature. The tempo is marked *All. vivace*. The score includes various musical notations such as notes, rests, and dynamic markings. The dynamics include *p* (piano), *poco f* (poco forte), *dolce* (softly), and *crec.* (crescendo). There are also some slanted lines indicating sustained notes or chords. The piece concludes with a final chord marked *dolce*.



A handwritten musical score consisting of six staves. The notation includes various rhythmic values, accidentals, and dynamic markings. The first staff begins with a double bar line and contains several measures of music. The second staff starts with a dynamic marking of *f.* and includes a section marked *Secco*. The third staff features a second ending bracket labeled '2' and a dynamic marking of *p.*. The fourth staff concludes with a double bar line. The fifth staff begins with a dynamic marking of *f.* and ends with a double bar line. The sixth staff contains a large fermata over a final note, followed by a double bar line. The piece concludes with the word *Fine* written in cursive.

*Fine* ~