



SONGS
FROM
VINEACRE
BY
ETHELBERT NEVIN
1928

A NECKLACE OF LOVE.....5

SLEEPING AND DREAMING. 6

THE DREAM-MAKER MAN. 6

EIN LIEDCHEN..... 7 1/2

MON DÉSIR. In C#... In Bb. 6

THE NIGHTINGALE'S SONG. In A#. In F. 7 1/2

THE SILVER MOON In F. In D. 5
LA LUNE BLANCHE

EIN HELDENLIED..... 3

JOHN CHVRCH CO
NEW YORK - CINCINNATI - CHICAGO
LEIPSIK LONDON.

To W. C.

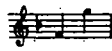
3

The Silver Moon.

La Lune Blanche.

High Voice.

Words by PAUL VERLAINE.
English words by J. R. M.



Music by ETHELBERT NEVIN.
Op. 28, No. 6.

Semplice.

mesza voce

The sil - ver moon - light gleams thro' the trees,
La lu - ne blan - che Luit dans les bois;

p vibrato

And voic - es sweet are borne on the breeze, Voic - es of
De cha - que blan - che Part u - ne voix Sous la ra -

love. O Dear - est One,
mé - e. O bian - ai - mé - - e.

mp

Copyright, MCMVI, by The John Church Company. International Copyright.
Entered according to act of the Parliament of Canada in the year MCMVI,
by The John Church Company in the Department of Agriculture.

The pool's deep wa - ters mir-ror the sky, And mourn-ful wil - low
L'é - tang re - flète, Pro - fond mi-roir, La sil - hou - ette Du

bend-ing nigh, The tree of sor - - - row, Oh bless - ed
sau - e noir Où le vent pleu - - - re Re - vons, c'est

hour. A sweet and ho - ly
l'heure. Un vaste et ten - dre g -
cantando
dolce dolce

peace from a - bove Comes down up - on this
pai - se - ment Sem - ble des - cen - dre

suivre

Detailed description: This system contains the first two lines of the musical score. The vocal line (top staff) begins with a triplet of eighth notes. The piano accompaniment (bottom two staves) features a steady bass line and chords in the right hand. The word 'suivre' is written at the end of the piano part.

blest hour of love, This hour of love This hour of
du fir - ma - ment Que l'as - tre i - ri - - se O'est l'heure ex -

cresc. cantando dolciss.

Detailed description: This system contains the second and third lines of the musical score. The vocal line continues with a triplet and a long note. The piano accompaniment includes dynamic markings: 'cresc.' (crescendo), 'cantando' (cantabile), and 'dolciss.' (dolcissimo). The piano part ends with a double bar line.

love, of love.
qui - - - - - se.

dim. p pp

Detailed description: This system contains the third and fourth lines of the musical score. The vocal line has a long note with a fermata. The piano accompaniment features dynamic markings: 'dim.' (diminuendo), 'p' (piano), and 'pp' (pianissimo). The piano part ends with a double bar line and a fermata.