

**KV - A229**

**SEIS SONATINAS VIENESAS**

(Arreglo contemporaneo de Ferdinand Kauer de la kv439b de Mozart)

**SONATINA N° 5**

**2.- MINUETO**

**TRANSCRIPCIÓN: LUIS ALVAREZ      MOZART (W. AMADEUS)**  
**(1756 - 1791)**

**ALEGRETO**

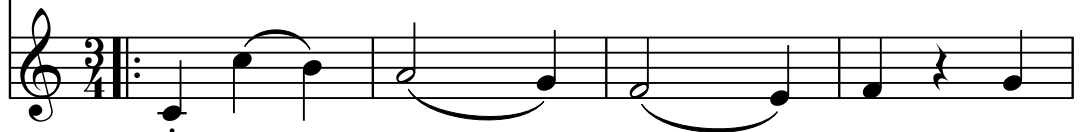
*♩ = 140*

**Guitarra 1**

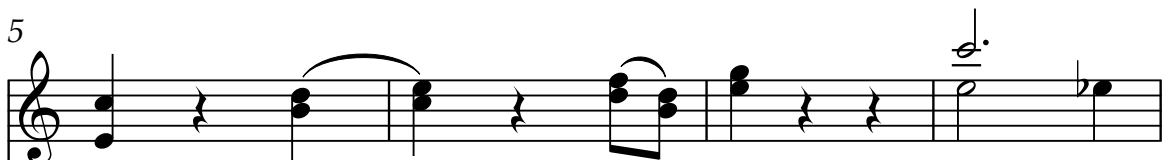


*♩ = 140*

**Guitarra 2**



**Guit.1**



**Guit.2**



**Guit.1**

9

**Guit.2**

**Guit.1**

13

**Guit.2**

**Guit.1**

17

**Guit.2**

**Guit.1**

21

**Guit.2**

25

**Guit.1**

**Guit.2**

29

**Guit.1**

**Guit.2**

33

**Guit.1**

**Guit.2**

**TRIO**

37

**Guit.1**

**Guit.2**

41

**Guit.1**

**Guit.2**

44

**Guit.1**

**Guit.2**

47

**Guit.1**

**Guit.2**

50

**Guit.1**

**Guit.2**

53

**Guit.1**

**Guit.2**

56

**Guit.1**

**Guit.2**

60

**Guit.1**

**Guit.2**

64

**Guit.1**

**Guit.2**

68

**Guit.1**

**Guit.2**

68

72

**Guit.1**

**Guit.2**

72

76

**Guit.1**

**Guit.2**

76

**ALEGRETO**

80

**Guit.1**

**Guit.2**

80

84

**Guit.1**

**Guit.2**

88

**Guit.1**

**Guit.2**

92

**Guit.1**

**Guit.2**

96

**Guit.1**

**Guit.2**

Detailed description of the musical score: The score is for two guitars, Guit.1 and Guit.2, in treble clef. It consists of five systems of two staves each. The first system (measures 84-87) shows Guit.1 with a melodic line of eighth and quarter notes, and Guit.2 with a bass line of quarter notes and eighth notes. The second system (measures 88-91) features Guit.1 with a melodic line of quarter and eighth notes, and Guit.2 with a bass line of quarter notes and eighth notes. The third system (measures 92-95) shows Guit.1 with a melodic line of quarter and eighth notes, and Guit.2 with a bass line of quarter notes and eighth notes. The fourth system (measures 96-99) features Guit.1 with a melodic line of quarter and eighth notes, and Guit.2 with a bass line of quarter notes and eighth notes. The score includes various musical notations such as notes, rests, slurs, and repeat signs.

100

**Guit.1**

**Guit.2**

104

**Guit.1**

**Guit.2**

108

**Guit.1**

**Guit.2**

112

**Guit.1**

**Guit.2**

116

**Guit.1**

**Guit.2**