

# OPUS 19

## DOSUGI

### 3.- Le Romantique

ARMONIZADO POR LUIS ALVAREZ

MERTZ

$\text{♩} = 100$

**Maestoso**

Measures 1-6 of the piece. The music is in 2/4 time with a key signature of one sharp (F#). It features a melody in the right hand with triplet eighth notes and a bass line with quarter notes and rests.

Measures 7-12. The melody continues with triplet eighth notes and quarter notes. The bass line includes some chromatic movement.

Measures 13-18. The piece continues with similar rhythmic patterns and harmonic structure.

Measures 19-22. The music features a change in the bass line with a 6/8 time signature indicated for a few measures.

Measures 23-26. The final section on this page includes sixteenth-note passages in the right hand.

2

$\text{♩} = 120$

26

29

32

35

$\text{♩} = 130$

38

41

44

$\text{♩} = 100$

48

$\text{♩} = 80$

Andantino

53

56

59

62

65

68

Musical notation for measures 70 and 71. The key signature is one sharp (F#). Measure 70 features a treble clef with a melody of eighth notes and a bass clef accompaniment of chords. Measure 71 continues the melody with a fermata over the final note. Both measures contain triplets of eighth notes.

Alegreto

Musical notation for measures 72 and 73. The key signature is one sharp (F#). Both measures feature a treble clef with a melody of eighth notes and a bass clef accompaniment of chords. The melody consists of eighth-note patterns.

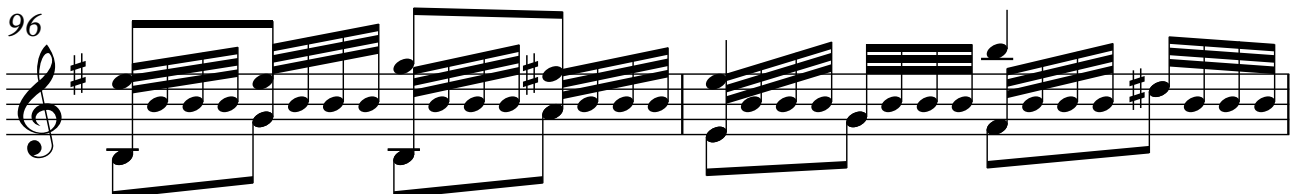
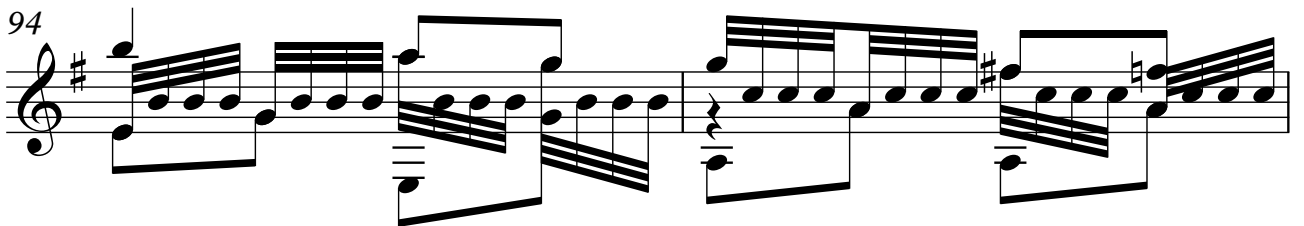
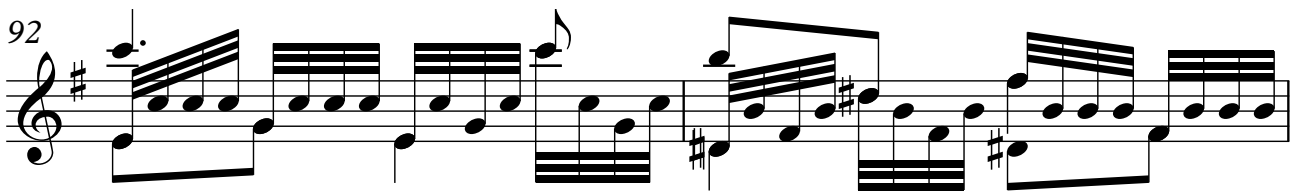
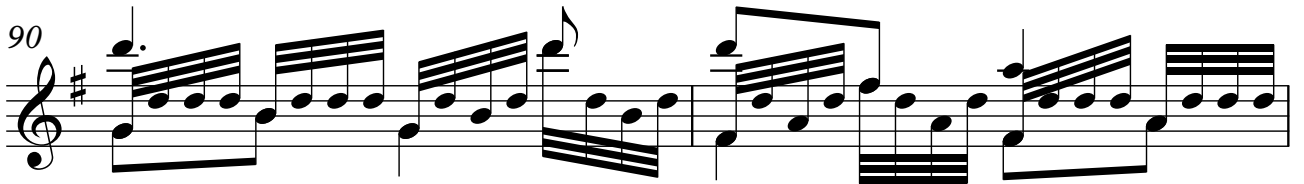
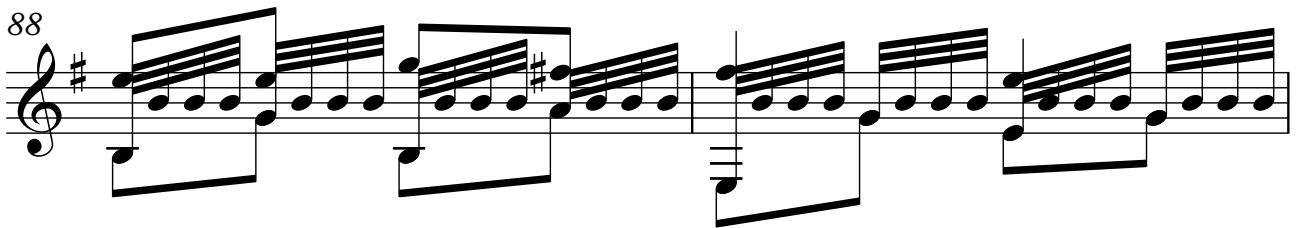
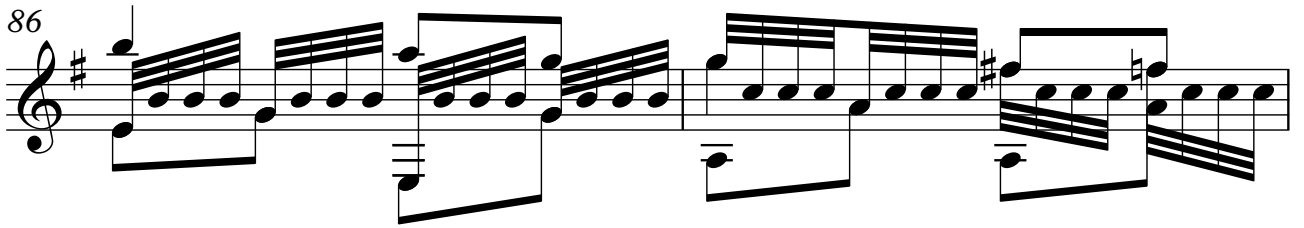
Musical notation for measures 74 and 75. The key signature is one sharp (F#). Both measures feature a treble clef with a melody of eighth notes and a bass clef accompaniment of chords. The melody consists of eighth-note patterns.

Musical notation for measures 76 and 77. The key signature is one sharp (F#). Both measures feature a treble clef with a melody of eighth notes and a bass clef accompaniment of chords. The melody consists of eighth-note patterns.

Musical notation for measures 78 and 79. The key signature is one sharp (F#). Both measures feature a treble clef with a melody of eighth notes and a bass clef accompaniment of chords. The melody consists of eighth-note patterns.

Musical notation for measures 80 and 81. The key signature is one sharp (F#). Both measures feature a treble clef with a melody of eighth notes and a bass clef accompaniment of chords. The melody consists of eighth-note patterns.

Musical notation for measures 82 and 83. The key signature is one sharp (F#). Measure 82 features a treble clef with a melody of eighth notes and a bass clef accompaniment of chords. Measure 83 continues the melody with a fermata over the final note. Both measures contain eighth-note patterns.



6

98

100

102

104

106

108

110

112

114

116

118

120

122