

# OPUS 14

## FANTASIA

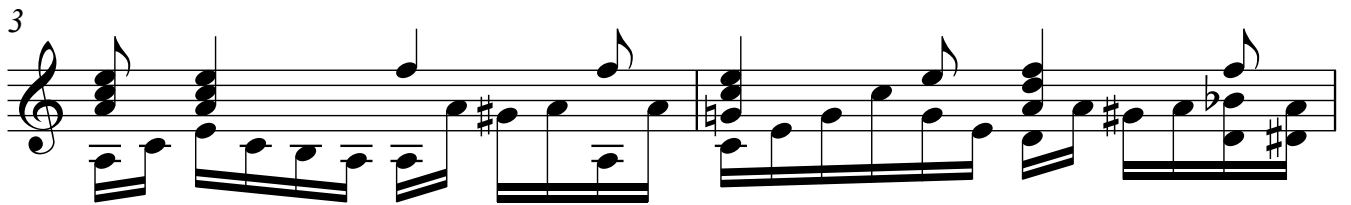
Nº- 3  
MODERATO

ARMONIZADO POR LUIS ALVAREZ

MERTZ

$\text{♩} = 60$

**Moderato**



2  
9

11

12

13

14

15

16

Musical notation for measures 16 and 17. Measure 16 features a treble clef, a 7/8 time signature, and a key signature of one sharp (F#). The melody consists of eighth notes, and the bass line has a dotted quarter note followed by an eighth note. Measure 17 continues the melody with eighth notes and includes a sharp sign (#) above the staff.

17

Musical notation for measures 17 and 18. Measure 17 continues the melody with eighth notes. Measure 18 features a treble clef and a key signature of one sharp (F#). The melody consists of eighth notes, and the bass line has a dotted quarter note followed by an eighth note.

18

Musical notation for measures 18 and 19. Measure 18 continues the melody with eighth notes. Measure 19 features a treble clef and a key signature of one sharp (F#). The melody consists of eighth notes, and the bass line has a dotted quarter note followed by an eighth note.

19

Musical notation for measures 19 and 20. Measure 19 continues the melody with eighth notes. Measure 20 features a treble clef and a key signature of one sharp (F#). The melody consists of eighth notes, and the bass line has a dotted quarter note followed by an eighth note.

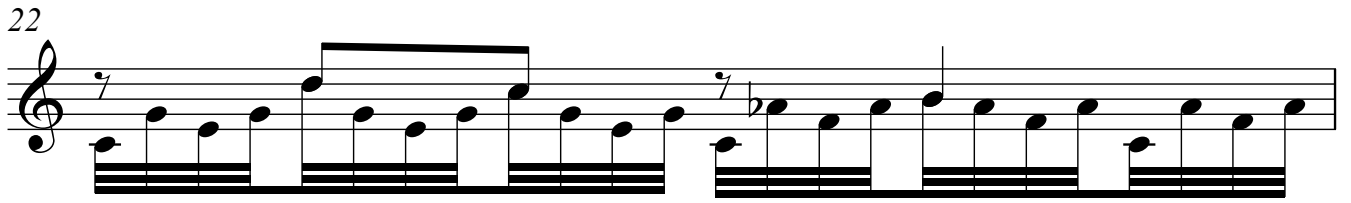
20

Musical notation for measures 20 and 21. Measure 20 continues the melody with eighth notes. Measure 21 features a treble clef and a key signature of one sharp (F#). The melody consists of eighth notes, and the bass line has a dotted quarter note followed by an eighth note.

21

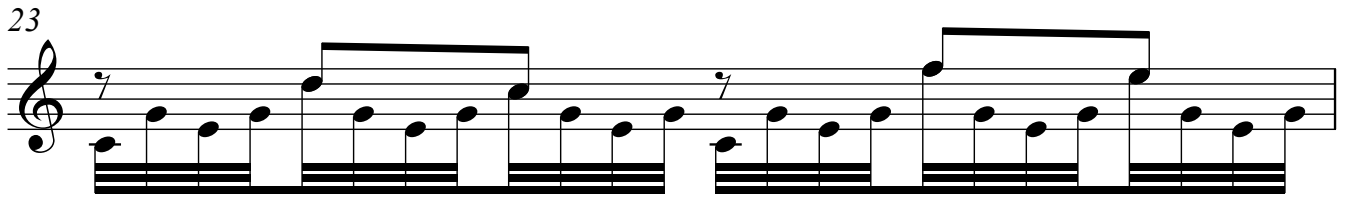
Musical notation for measures 21 and 22. Measure 21 features a treble clef, a 7/8 time signature, and a key signature of one sharp (F#). The melody consists of eighth notes, and the bass line has a dotted quarter note followed by an eighth note. Measure 22 continues the melody with eighth notes and includes a sharp sign (#) above the staff.

22



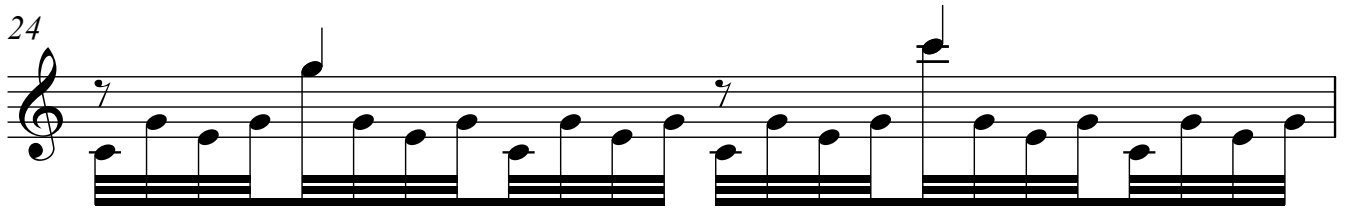
Musical notation for measure 22, featuring a treble clef and a 7/8 time signature. The melody consists of eighth notes, with a slur over the first four notes and a fermata over the eighth note. The bass line consists of eighth notes.

23



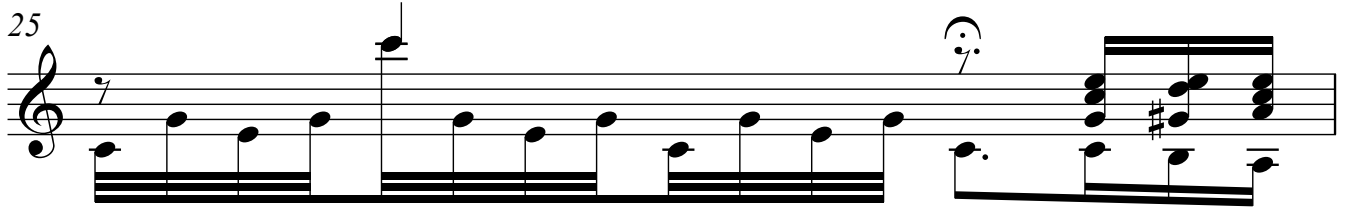
Musical notation for measure 23, featuring a treble clef and a 7/8 time signature. The melody consists of eighth notes, with a slur over the first four notes and a fermata over the eighth note. The bass line consists of eighth notes.

24



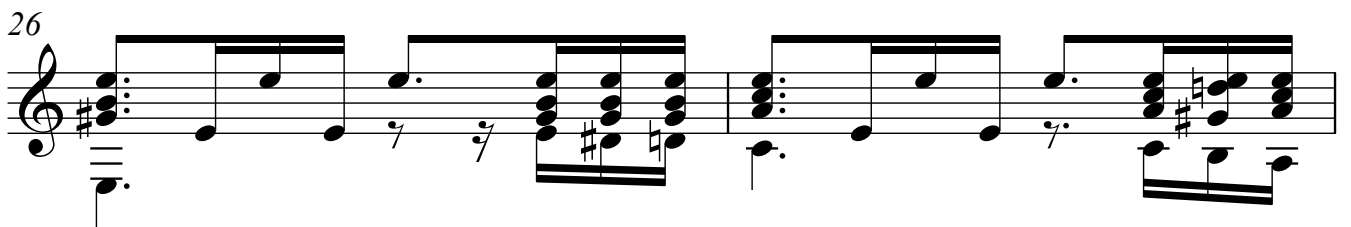
Musical notation for measure 24, featuring a treble clef and a 7/8 time signature. The melody consists of eighth notes, with a slur over the first four notes and a fermata over the eighth note. The bass line consists of eighth notes.

25



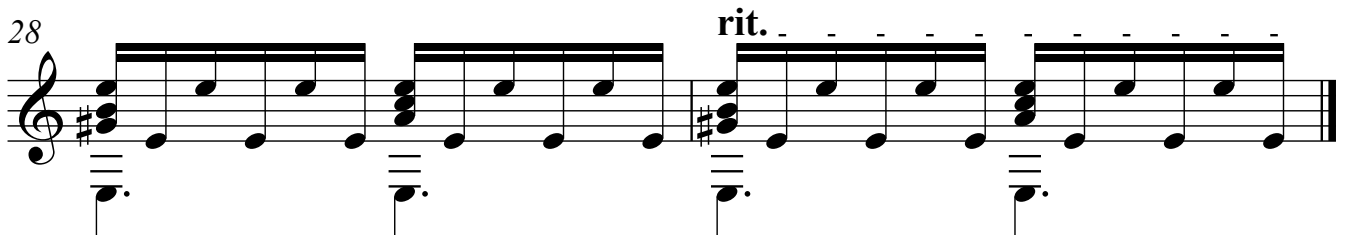
Musical notation for measure 25, featuring a treble clef and a 7/8 time signature. The melody consists of eighth notes, with a slur over the first four notes and a fermata over the eighth note. The bass line consists of eighth notes.

26



Musical notation for measure 26, featuring a treble clef and a 7/8 time signature. The melody consists of eighth notes, with a slur over the first four notes and a fermata over the eighth note. The bass line consists of eighth notes.

28



Musical notation for measure 28, featuring a treble clef and a 7/8 time signature. The melody consists of eighth notes, with a slur over the first four notes and a fermata over the eighth note. The bass line consists of eighth notes. The word "rit." is written above the staff.