

# Scaddle-de-Mooch

*Novelty Song*

*Words and Music by*  
**Cecil Mack**



*and*  
**Chris. Smith**

Introduced by  
**NORA BAYES**  
IN  
**ZIEGFELD'S**  
**MIDNIGHT FROLICS**

50¢

## THE MOST ATTRACTIVE MUSIC ALBUMS

FOR ALL PLAYERS

50c. per Volume Net

STERN'S EDITION

# HALF HOUR SERIES

## OF ALBUMS FOR PIANO

- ☞ This Half Hour series has no equal for attractiveness and thorough merit. Its value is far ahead of any similar work.
- ☞ The books contain the choicest selections from the compositions of the world's greatest musicians.
- ☞ It is the most inexpensive series of its kind and covers a wide field of pianoforte music of all the best forms.
- ☞ It is a pleasure both for teacher and pupil to work from these interesting and well prepared books. The editing and fingering is perfect.
- ☞ Each of the twenty-two volumes covers a field of its own. The entire series forms a library of pianoforte gems which every lover of music should possess.

### LIST OF VOLUMES

BEETHOVEN  
CHOPIN, Vol. I.  
CHOPIN Vol. II.  
MENDELSSOHN  
MOZART  
OLD MASTERS  
SCHUBERT  
SCHUMANN  
C. M. von WEBER  
CARL BOHM  
CHAMINADE  
GODARD  
GRIEG, Vol. I.  
GRIEG, Vol. II.  
LISZT  
MOSZKOWSKI  
RUBINSTEIN  
MODERN CLASSIC REPERTOIRE,  
Vols. I. & II.  
FAVORITE RUSSIAN  
COMPOSERS  
FAVORITE FRENCH  
COMPOSERS  
FAVORITE SALON  
COMPOSITIONS  
SELECTIONS FROM  
" CARMEN "  
50c. per Volume Net.

Ask your dealer for a descriptive catalogue of Stern's Edition Albums, giving complete contents.  
If he cannot supply you, the publishers will mail you one for the asking.

PUBLISHED BY

America's representative  
Music House

**JOS. W. STERN & CO.**

102-104 West 38th Street,  
New York City.

"MY LITTLE DREAM GIRL"  
BY AMERICA'S BEST SONG WRITERS  
L. Wolfe Gilbert and Anatol Friedland

## Scaddle - De - Mooch

Words and Music by  
 CECIL MACK  
 & CHRIS SMITH

Moderato

The piano introduction consists of two staves. The right hand features a rhythmic pattern of eighth notes and chords, while the left hand provides a steady bass line. The tempo is marked 'Moderato' and the dynamics range from *fz* to *fz*.

VAMP.

Joe Ma - do - za, the  
 Mis - ter Moos - er, the

The vamp section is marked 'VAMP.' and features a repeating piano accompaniment. The right hand has a melodic line with a 'mf' dynamic, and the left hand has a bass line with a 'p' dynamic.

black com - pos - er, Wrote a nov - el - ty In a way, — It  
 big pro - duc - er, Thought the song — would fit in his show, — He

The first verse of the song. The vocal line is on a single staff, and the piano accompaniment is on two staves. The lyrics are: 'black com - pos - er, Wrote a nov - el - ty In a way, — It big pro - duc - er, Thought the song — would fit in his show, — He'.

was a mus - i - cal play — Full of com - e - dy and  
 sent a let - ter to Joe, — And re - quest - ed him to

The second verse of the song. The vocal line is on a single staff, and the piano accompaniment is on two staves. The lyrics are: 'was a mus - i - cal play — Full of com - e - dy and sent a let - ter to Joe, — And re - quest - ed him to'.

Copyright MCMXV by Jos. W. Stern & Co.  
 British Copyright Secured.

English Theatre and Music Hall rights strictly reserved.

Depositado conforme con las Leyes de los Payeses de Sud y Central America y Mexico.  
 Depositado en el año MCMXV por Jos. W. Stern y Cia., Proprietarios Nueva York.

8010-3

A SONG FOR THE HOME AND PARLOR  
 "MY LITTLE DREAM GIRL"

fun - ny sit - u - a - tions; Sal - lie Skip - long sang the hit - song,  
come on down and play it. Joe said "Seuse - me" Boss don't 'buse - me,

sang the ver - y dick - ens out of it too - It had a mel - o - dy  
Guess I'm go - ing cra - zy as an - y loon - Now 'bout that song - you've heard,

that sound - ed good - to me, Lis - ten and I'll sing - it to you -  
I'se for - got ev' - ry word, But I'll try to hum - you the tune.

CHORUS

There aint noth - in to it but the har - mo - ny - There aint noth - in to it but the

*mf - ff*

mel-o - dy,— But when you hear it, You'll de - clare, "Gee it's rip-pin, it's a pip-pin it's a

won-der-ful air!— There aint no sense to the dog-gone thing, In the

mid-dle of the Chorus all you do is sing:— Scad dle-de - mooch, Dee-dle-ee Scad dle-de-

L.H.

mooch, Dee-dle-um, Scad dle - mooch, Scad dle-de-mooch, Deedle - ee Bim Bun, You see there

L.H.

aint noth-in to it but you'll a - gree, It's a migh-ty fine melo - dy.— There dy.—

# FOUR RECOGNIZED SONG GEMS

## MY SWEET ADAIR

By L. Wolfe Gilbert and Anatol Friedland

Sister Song To "My Little Dream Girl"



THE QUEEN OF ALL HARMONY SONGS



## OPEN UP YOUR HEART

This Is The One Step Melody You've Been Dancing To, and The Liveliest Of Lively Songs. Introduced By Frederick V. Bowers.



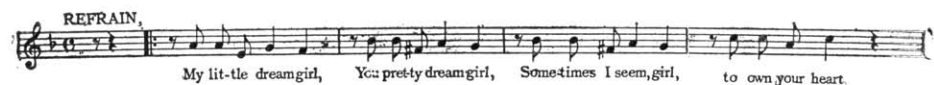
Another "Hit" By America's Prolific Writer, L. Wolfe Gilbert



## MY LITTLE DREAM GIRL

A World Wide Ballad Success

Conceded By Press and Public — The Best Ballad In Recent Years.



Your "Repertoire" Is Incomplete Without A Copy of "Dream Girl"



## PAINTING THAT MOTHER OF MINE

By Frank Sturgis and L. Wolfe Gilbert

The Last Word In "Mother" Ballads, A Poem That Will Live Forever.



THE BEST SONG WE EVER PUBLISHED



Copies of the first three mentioned above on sale at all Music Shops or will be sent by the Publishers on receipt of 12c each postpaid. "Painting That Mother of Mine" is 25c postpaid.

JOS. W. STERN & CO.

America's Representative  
Music Publishers

102-104 WEST 38th STREET  
NEW YORK CITY